

LAXX ONE DEPARTURE

AL-237 (FAA)

LOS ANGELES INTL (LAX)
LOS ANGELES, CALIFORNIA

SW-3, 04 JAN 2018 to 01 FEB 2018

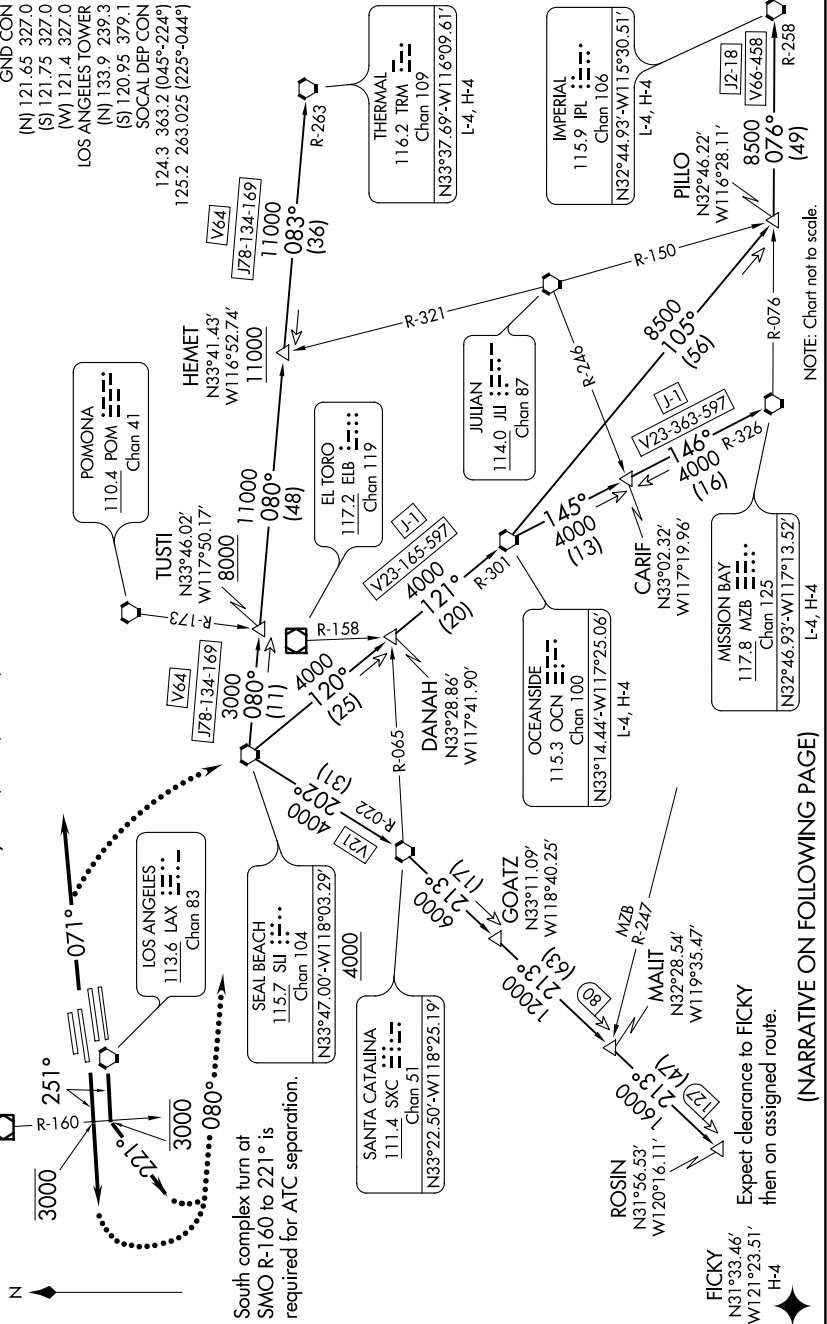
TOP ALTITUDE: ASSIGNED BY ATC

TAKEOFF MINIMUMS

Rwy 6L/R, 7L/R, 24L/R, 25L/R: Standard.

NOTE: This departure is for
turbojet aircraft only.
NOTE: RADAR and DME required.

D-ATIS DEP 135.65
CLNC DEL 120.35 327.0
CPDLC 120.35 327.0
GND CON (N) 121.65 327.0
(S) 121.75 327.0
(W) 121.4 327.0
LOS ANGELES TOWER (N) 133.9 239.3
(S) 120.95 379.1
SOCAL DEP CON 124.3 363.2 (045°-224°)
125.2 263.025 (225°-044°)



(NARRATIVE ON FOLLOWING PAGE)

SW-3, 04 JAN 2018 to 01 FEB 2018