

(LOOP1.LAX) 17229

LOOP ONE DEPARTURE

AL-237 (FAA)

LOS ANGELES INTL (LAX)
LOS ANGELES, CALIFORNIA

D-ATIS DEP
135.65
CLNC DEL
120.35 327.0
CPDLC
GND CON
(N) 121.65 327.0
(S) 121.75 327.0
(W) 121.4 327.0
LOS ANGELES TOWER
(N) 133.9 239.3
(S) 120.95 379.1
SOCAL DEP CON
124.3 363.2 (045°-224°)
125.2 263.025 (225°-044°)

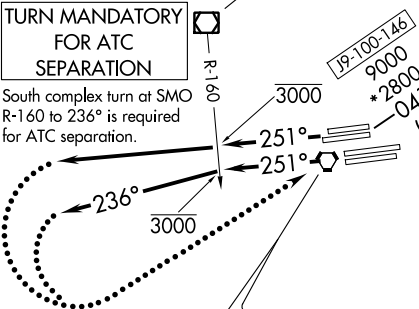
**TOP ALTITUDE:
15000**

DAGGETT
113.2 DAG
Chan 79
N34°57.75'-W116°34.69'
L-7, H-4
R-222

SANTA MONICA
110.8 SMO
Chan 45

**TURN MANDATORY
FOR ATC
SEPARATION**

South complex turn at SMO
R-160 to 236° is required
for ATC separation.



LOS ANGELES
113.6 LAX
Chan 83
N33°55.99'-W118°25.92'
10000

TAKEOFF MINIMUMS

Rwys 6L/R, 7L/R: NA-Operational.
Rwys 24L/R, 25L/R: Standard.

NOTE: RADAR and DME required.

NOTE: If unable to meet crossing restrictions,
at LAX VORTAC within 20 flying miles,
use the OSHNN or SEBBY DEPARTURE.

NOTE: Use the OSHNN or SEBBY DEPARTURE
during the period 2100-0700 local time
in lieu of the LOOP DEPARTURE.

NOTE: Chart not to scale.

SW-3, 04 JAN 2018 to 01 FEB 2018

SW-3, 04 JAN 2018 to 01 FEB 2018

DEPARTURE ROUTE DESCRIPTION

TAKEOFF RUNWAYS 24L/R: Climb on heading 251° to cross SMO R-160 at or below 3000, expect RADAR vectors to LAX VORTAC at or above 10000, thence. . . .

TAKEOFF RUNWAYS 25L/R: Climb on heading 251°, at the SMO R-160 turn left heading 236°, cross SMO R-160 at or below 3000, expect RADAR vectors to LAX VORTAC at or above 10000 thence. . . .

. . . .on (assigned transition) or (assigned route). All aircraft expect further clearance to filed flight level five minutes after departure.

DAGGETT TRANSITION (LOOP1.DAG): From over LAX VORTAC on LAX R-041 to COOPP, then on LAX R-041 and DAG R-222 to DAG VORTAC.

LOST COMMUNICATIONS: If not in contact with Departure Control within five minutes after departure, turn left and proceed direct LAX VORTAC, climb to FL230 or filed altitude whichever is lower, and when able proceed on filed or assigned route/fix/transition. Aircraft filing FL240 or above climb to filed altitude ten minutes after departure.

LOOP ONE DEPARTURE

(LOOP1.LAX) 17AUG17

LOS ANGELES, CALIFORNIA
LOS ANGELES INTL (LAX)