

SW-3, 04 JAN 2018 to 01 FEB 2018

**TOP ALTITUDE:
FL 230**

TAKEOFF MINIMUMS

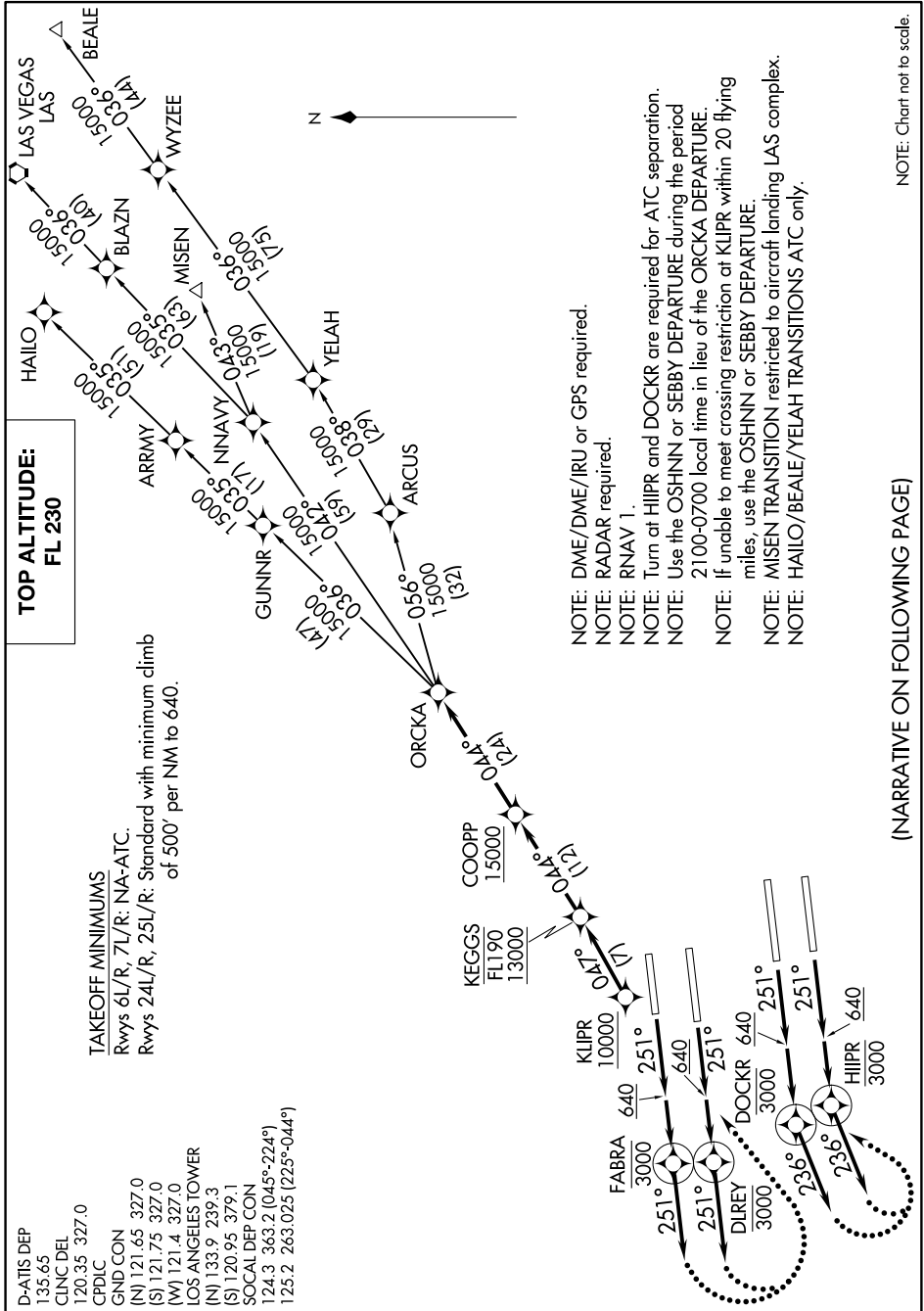
Rwys 6L/R, 7L/R: NA-ATC.

Rwys 24L/R, 25L/R: Standard with minimum climb of 500' per NM to 640.

D-ATIS DEP
135.65
CLNC DEL
120.35 327.0
CPDLC

GND CON
(N) 121.65 327.0
(S) 121.75 327.0
(W) 121.4 327.0

LOS ANGELES TOWER
(N) 133.9 239.3
(S) 120.95 379.1
SOCAL DEP CON
124.3 363.2 (045°-224°)
125.2 263.025 (225°-044°)



NOTE: DME/DME/IRU or GPS required.
NOTE: RADAR required.
NOTE: RNAV 1.
NOTE: Turn at HIIPR and DOCKR are required for ATC separation.
NOTE: Use the OSHNN or SEBBY DEPARTURE during the period 2100-0700 local time in lieu of the ORCKA DEPARTURE.
NOTE: If unable to meet crossing restriction at KLIPR within 20 flying miles, use the OSHNN or SEBBY DEPARTURE.
NOTE: MISEN TRANSITION restricted to aircraft landing LAS complex.
NOTE: HAILO/BEALE/YELAH TRANSITIONS ATC only.

(NARRATIVE ON FOLLOWING PAGE)

NOTE: Chart not to scale.

SW-3, 04 JAN 2018 to 01 FEB 2018