

RIIVR THREE ARRIVAL

AL-237 (FAA)

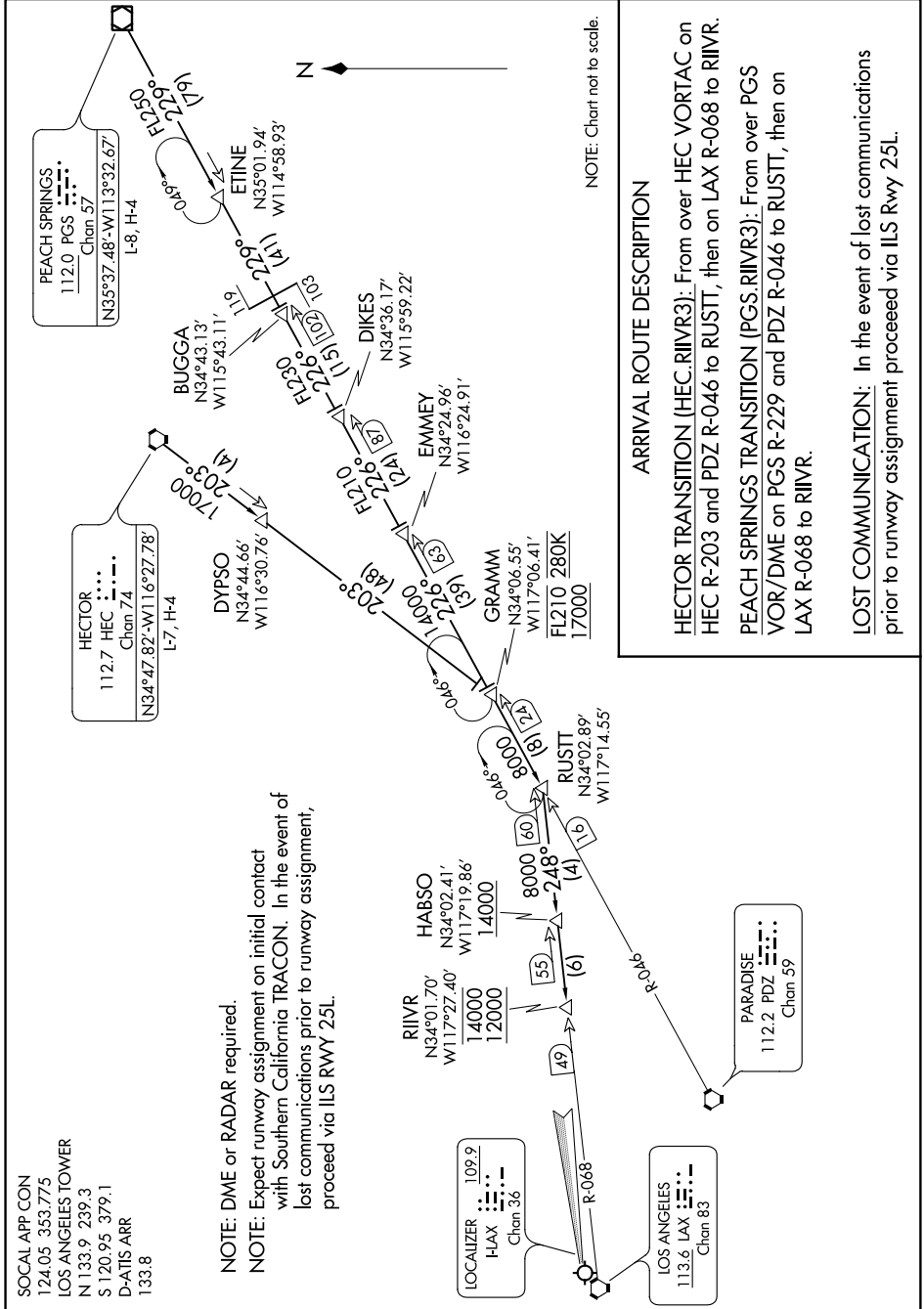
LOS ANGELES INTL (LAX)
LOS ANGELES, CALIFORNIA

SW-3, 04 JAN 2018 to 01 FEB 2018

SOCAL APP CON
124.05 353.775
LOS ANGELES TOWER
N 133.9 239.3
S 120.95 379.1
D-ATIS ARR
133.8

NOTE: DME or RADAR required.

NOTE: Expect runway assignment on initial contact with Southern California TRACON. In the event of lost communications prior to runway assignment, proceed via ILS RWY 25L.



ARRIVAL ROUTE DESCRIPTION

HECTOR TRANSITION (HEC.RIIVR3): From over HEC VORTAC on HEC R-203 and PDZ R-046 to RUSTT, then on LAX R-068 to RIIVR.

PEACH SPRINGS TRANSITION (PGS.RIIVR3): From over PGS VOR/DME on PGS R-229 and PDZ R-046 to RUSTT, then on LAX R-068 to RIIVR.

LOST COMMUNICATION: In the event of lost communications prior to runway assignment proceed via ILS Rwy 25L.

SW-3, 04 JAN 2018 to 01 FEB 2018

RIIVR THREE ARRIVAL

LOS ANGELES, CALIFORNIA
LOS ANGELES INTL (LAX)