

RNAV (RNP) Z RWY 24R

LOS ANGELES INTL (LAX)

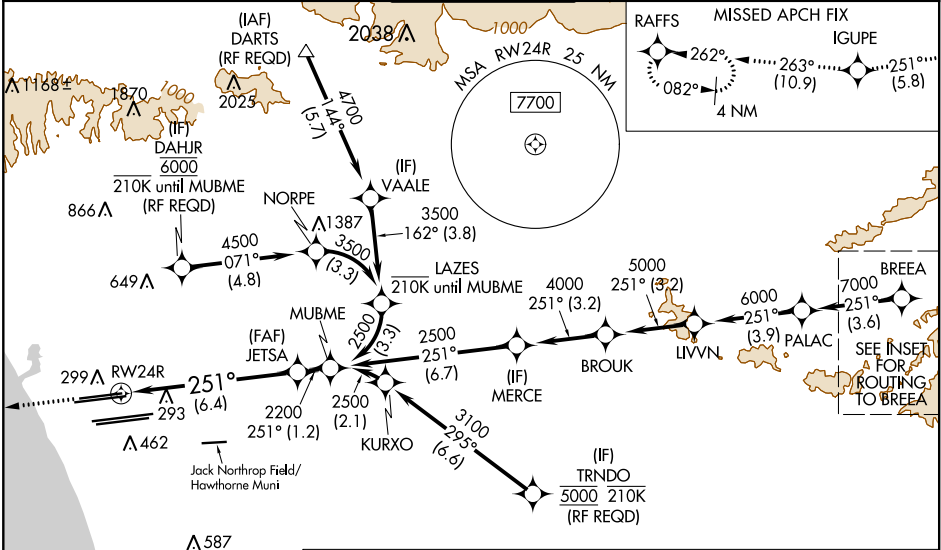
APP CRS	Rwy Idg	8925
251°	TDZE	122
	Apt Elev	128

For uncompensated Baro-VNAV systems, procedure NA below 5°C (41°F) or above 54°C (130°F). GPS required. For inop ALS, increase RNP 0.15 all Cats visibility to RVR 6000 and RNP 0.30 all Cats visibility to 1 1/2 SM. Simultaneous approach authorized. Simultaneous approach authorized with HHR.

ALSF-2

MISSED APPROACH: Climb to 2000 on track 251° to IGUPE and on track 263° to RAFFS and hold.

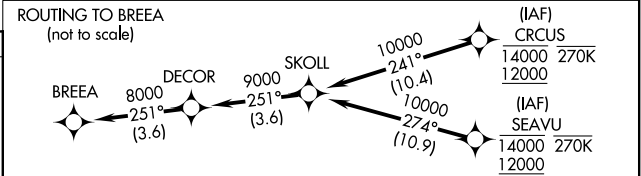
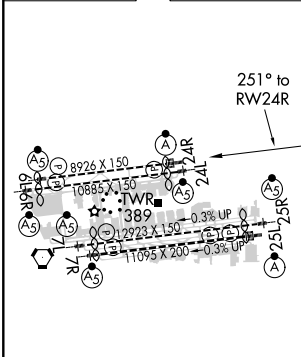
D-ATIS	SOCAL APP CON		LOS ANGELES TOWER	GND CON	CLNC DEL	CPDLC
ARR 133.8	124.3 363.2	124.9 269.0	N 133.9 239.3	N 121.65 327.0	120.35	
DEF 135.65	124.5 235.975	128.5 360.7	S 120.95 379.1	S 121.75 327.0	327.0	
	(225°-044°)	(090°-224°)		W 121.4 327.0		



SW-3, 04 JAN 2018 to 01 FEB 2018

SW-3, 04 JAN 2018 to 01 FEB 2018

ELEV 128	D	TDZE 122
-----------------	----------	-----------------



2000 IGUPE tr 251°

tr 263° RAFFS

See planview for multiple IF locations.

VGSI and RNAV glidepath not coincident (VGSI Angle 3.00/TCH 73).

6.4 NM

1.2 NM

GP 3.00° TCH 55

CATEGORY	A	B	C	D
RNP 0.15 DA		484/40	362 (400-34)	
RNP 0.30 DA		586/60	464 (500-1¼)	

AUTHORIZATION REQUIRED