


APP CRS	Rwy Idg	11134
251°	TDZE	104
	Apt Elev	128

RNAV (RNP) Z RWY 25R

LOS ANGELES INTL (LAX)

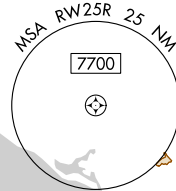
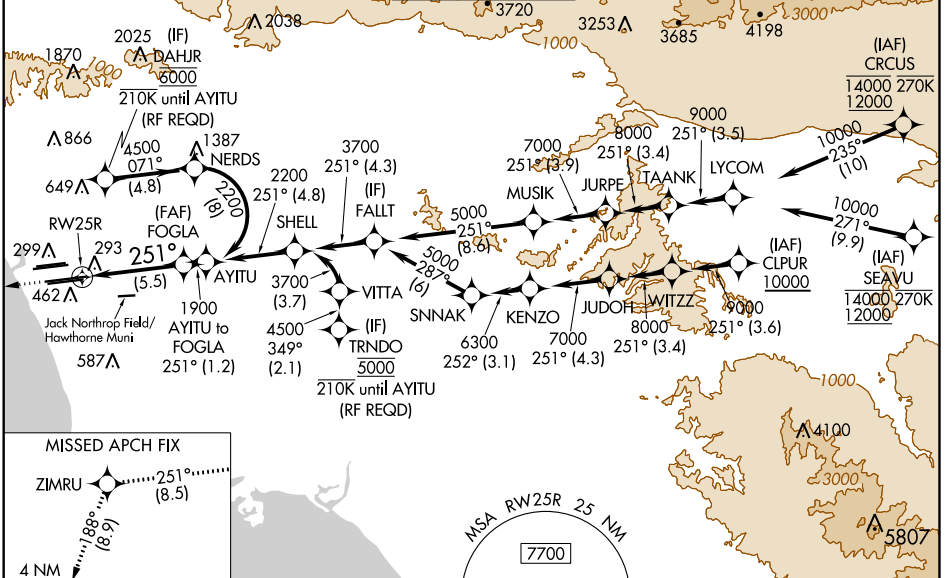
For uncompensated Baro-VNAV systems, procedure NA below 5°C (41°F) or above 54°C (130°F). Simultaneous approach authorized. Simultaneous approach authorized with HHR. GPS required. For inop ALS, increase RNP 0.11 all Cats visibility to RVR 6000.

MALSR

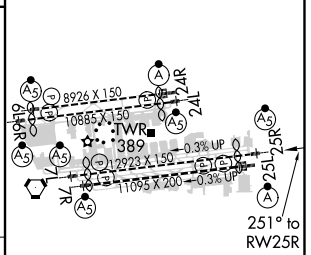
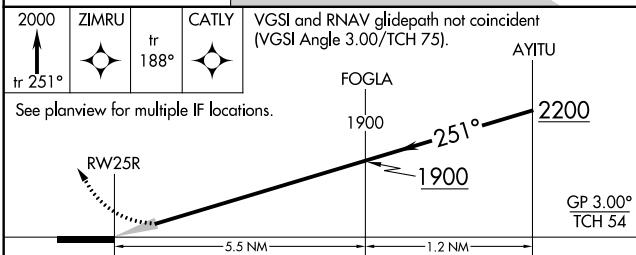


MISSED APPROACH: Climb to 2000 on track 251° to ZIMRU and track 188° to CATLY and hold.

D-ATIS	SOCAL APP CON		LOS ANGELES TOWER		GND CON		CLNC DEL	CPDLC
ARR 133.8	124.3	363.2	124.9	269.0	N 133.9	327.0	120.35	
DEP 135.65	124.5	235.975	128.5	360.7	S 120.95	327.1	327.0	
	(225°-044°)		(090°-224°)	(045°-089°)				



ELEV 128	TDZE 104
----------	----------



CATEGORY	A	B	C	D
RNP 0.11 DA		453/40	349 (400-¾)	
RNP 0.30 DA		544/50	440 (500-1)	

AUTHORIZATION REQUIRED

TDZ/CL Rwy's 7L, 24R, and 25L
HIRL all Rwy's

SW-3, 04 JAN 2018 to 01 FEB 2018

SW-3, 04 JAN 2018 to 01 FEB 2018