


WAAS CH 56407 W24B	APP CRS 251°	Rwy Idg TDZE Apt Elev	9483 123 128
---------------------------------	------------------------	-----------------------------	---

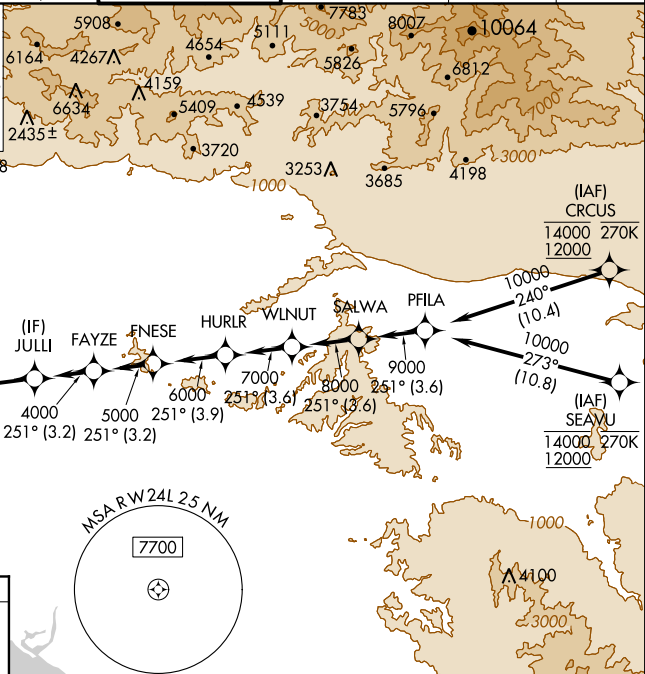
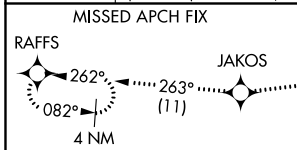
RNAV (GPS) Y RWY 24L

LOS ANGELES INTL (LAX)

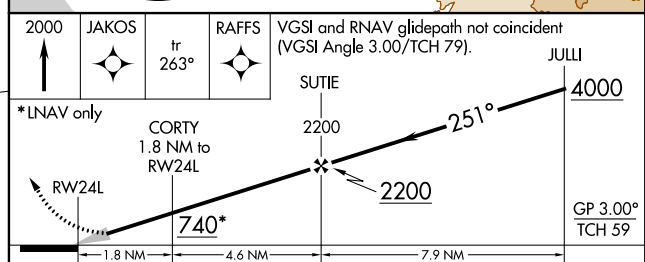
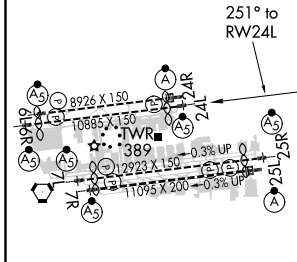
For uncompensated Baro-VNAV systems, LNAV/VNAV NA below 5°C (41°F) or above 54°C (130°F). Simultaneous approach authorized. LNAV procedure NA during simultaneous operations. Use of FD or AP providing RNAV track guidance required during simultaneous operations. Simultaneous approach authorized with HHR. DME/DME RNP-0.3 NA.

MALSR  MISSED APPROACH: Climb to 2000 direct JAKOS and track 263° to RAFFS and hold.

D-ATIS ARR 133.8 DEP 135.65	SOCAL APP CON 124.3 363.2 124.5 235.975 (225°-044°)	SOCAL APP CON 124.9 269.0 128.5 360.7 (090°-224°) (045°-089°)	LOS ANGELES TOWER N 133.9 239.3 S 120.95 379.1	GND CON N 121.65 327.0 S 121.75 327.0 W 121.4 327.0	CLNC DEL 120.35 327.0	CPDLC
---	--	---	--	---	---	-------



ELEV 128	D	TDZE 123
----------	----------	----------



CATEGORY	A	B	C	D
LPV DA		323/24	200 (200-½)	
LNAV/VNAV DA		608/60	485 (500-1¼)	
LNAV MDA	660/24	537 (600-½)	660/55	537 (600-1¼)

SW-3, 04 JAN 2018 to 01 FEB 2018

SW-3, 04 JAN 2018 to 01 FEB 2018