

WAAS CH 53507 W25A	APP CRS 251°	Rwy Idg 11095 TDZE 104 Apt Elev 128
--	------------------------	--

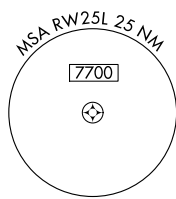
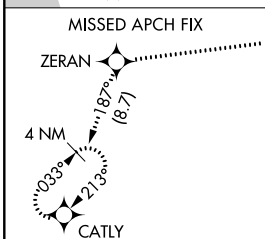
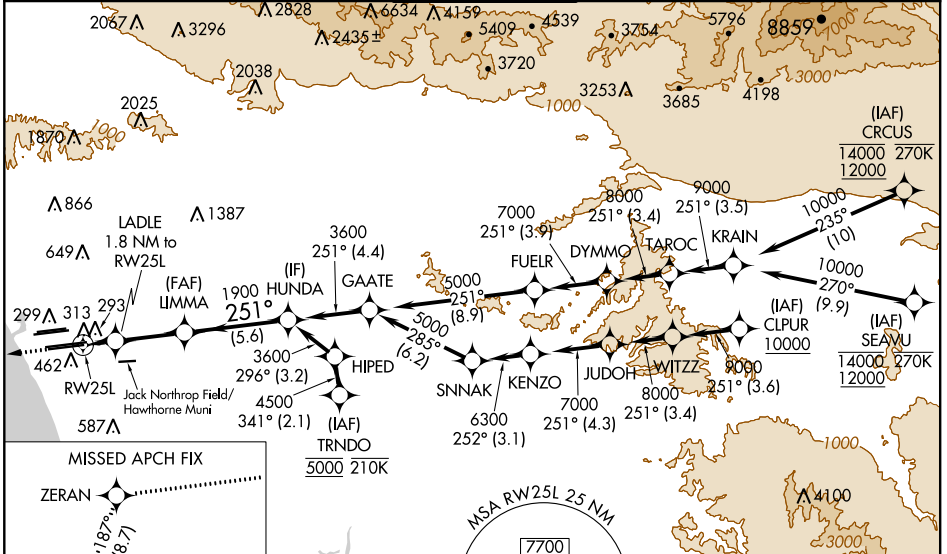
RNAV (GPS) Y RWY 25L

LOS ANGELES INTL (LAX)

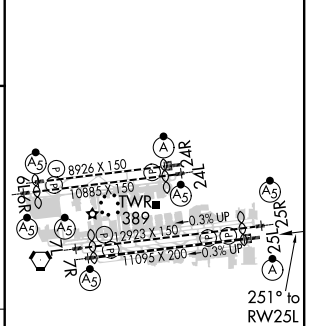
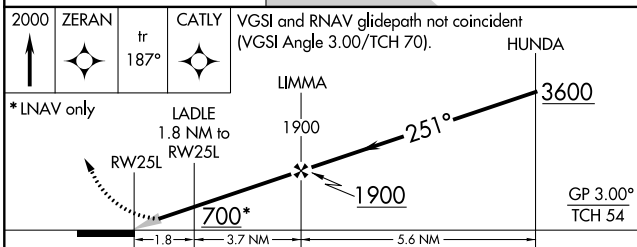
For uncompensated Baro-VNAV systems, LNAV/VNAV NA below 5°C (41°F) or above 54°C (130°F). DME/DME RNP-0.3 NA. For inop ALS, increase LPV all Cats visibility to RVR 4500. Simultaneous approach authorized. Simultaneous approach authorized with HHR 25. LNAV only approach NA during simultaneous operations. Use of FD or AP providing RNAV track guidance required during simultaneous operations.

ALS-F-2
MISSED APPROACH: Climb to 2000 direct ZERAN and on track 187° to CATLY and hold.

D-ATIS ARR 133.8 DEP 135.65	SOCAL APP CON 124.3 363.2 (APCH FM WEST) 124.9 269.0 (090°-224°) 128.5 360.7 (045°-089°)	LOS ANGELES TOWER N 133.9 239.3 S 120.95 379.1	GND CON N 121.65 327.0 S 121.75 327.0 W 121.4 327.0	CLNC DEL 120.35 327.0	CPDLC
---	---	--	---	---	-------



ELEV 128	D TDZE 104
----------	-------------------



CATEGORY	A	B	C	D
LPV DA		365/20	261 (300-½)	
LNAV/VNAV DA		575/60	471 (500-1½)	
LNAV MDA	640/24	536 (600-½)	640/55	536 (600-1¼)

TDZ/CL Rwy's 7L, 24R, and 25L
HIRL all Rwy's

SW-3, 04 JAN 2018 to 01 FEB 2018

SW-3, 04 JAN 2018 to 01 FEB 2018