

WAAS CH 42504 WOT7A	APP CRS 071°	Rwy Idg TDZE 128 Apt Elev 128	11259
----------------------------------	------------------------	---	--------------

RNAV (GPS) Y RWY 7L

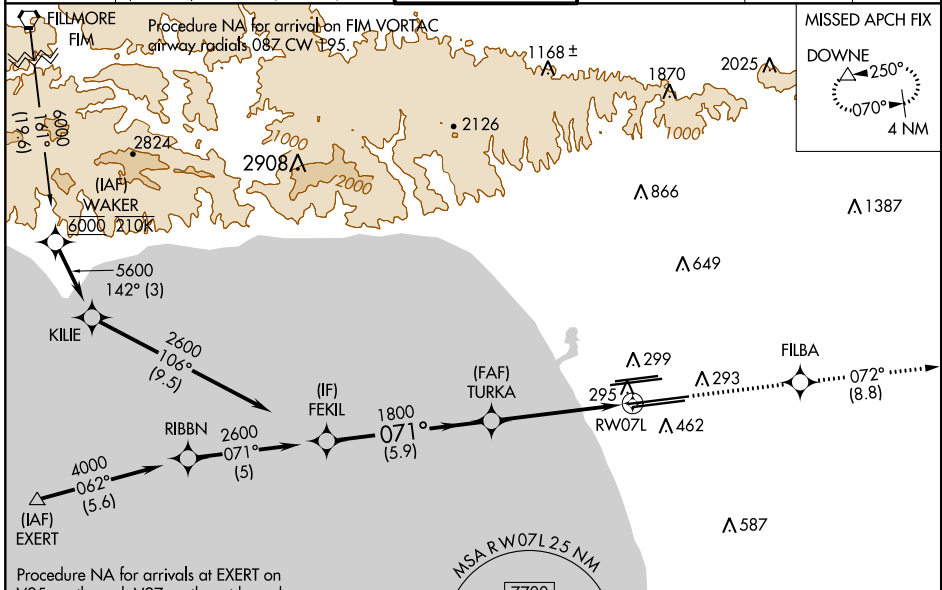
LOS ANGELES INTL (LAX)

▼ For uncompensated Baro-VNAV systems, LNAV/VNAV NA below 5°C (41°F) or above 54°C (130°F). DME/DME RNP -0.3 NA. LNAV procedure NA during simultaneous operations. Use of FD or AP providing RNAV track guidance required during simultaneous operations. Simultaneous approach authorized.



MISSED APPROACH: Climb to 3000 direct FILBA and on track 072° to DOWNE and hold.

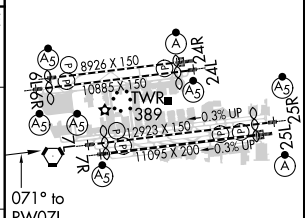
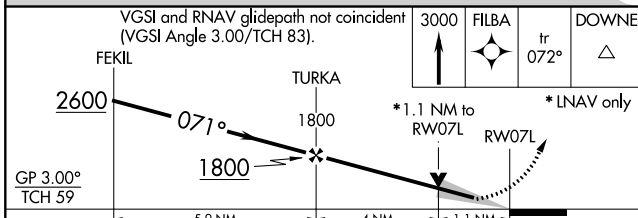
D-ATIS ARR 133.8 DEP 135.65	SOCAL APP CON 124.3 363.2 (APCH FM WEST) 124.5 235.975 (225°-044°)	APP CON 124.9 269.0 (090°-224°) 128.5 360.7 (045°-089°)	LOS ANGELES TOWER N 133.9 239.3 S 120.95 379.1	GND CON N 121.65 327.0 S 121.75 327.0 W 121.4 327.0	CLNC DEL 120.35 327.0	CPDLC
---	--	---	--	---	---	-------



SW-3, 04 JAN 2018 to 01 FEB 2018

SW-3, 04 JAN 2018 to 01 FEB 2018

ELEV 128	D	TDZE 128
----------	----------	----------



GP 3.00° TCH 59	5.9 NM	4 NM	1.1 NM	
CATEGORY	A	B	C	D
LPV DA		344/18	216 (300-½)	
LNAV/VNAV DA		464/30	336 (400-⅝)	
LNAV MDA	560/24	432 (500-½)	560/40	432 (500-¾)

071° to RW07L

TDZ/CL Rwy's 7L, 24R, and 25L
HIRL all Rwy's