

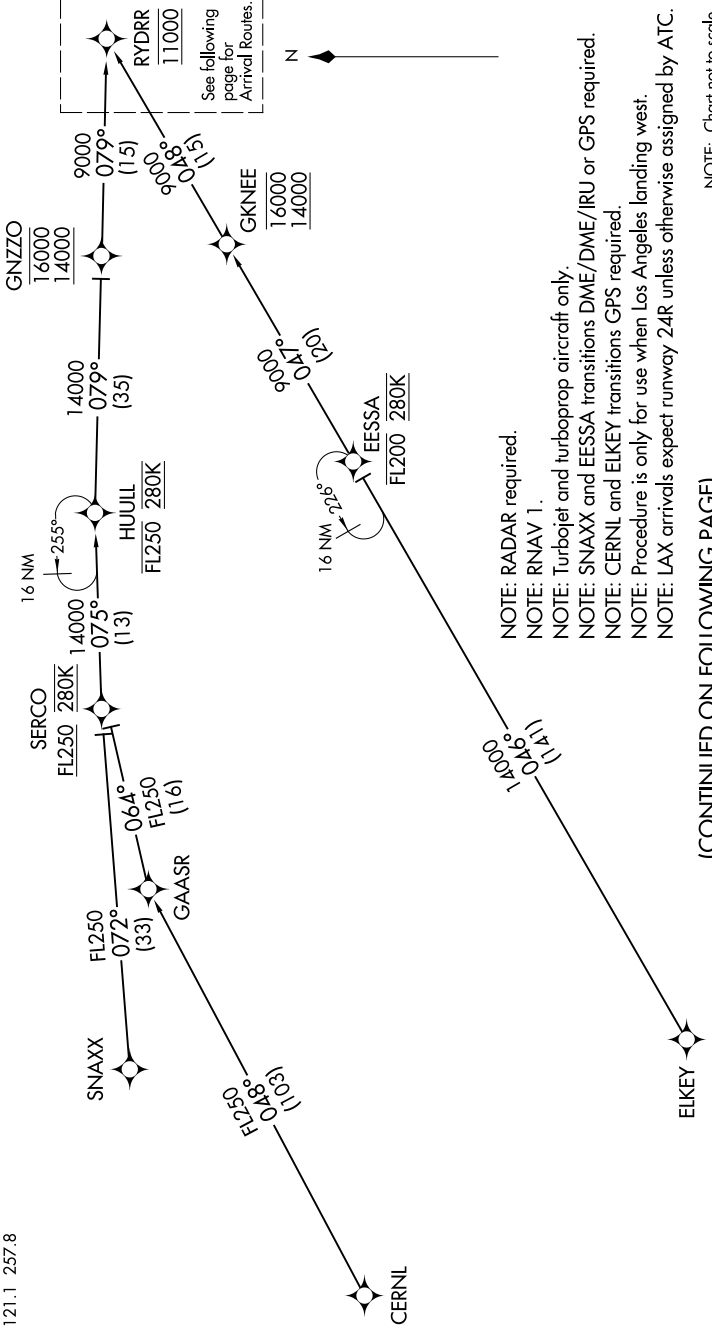
RYDRR ONE ARRIVAL (RNAV) Transition Routes

LOS ANGELES, CALIFORNIA

SW-3, 04 JAN 2018 to 01 FEB 2018

SOCAL APP CON
124.5 235.975
LOS ANGELES INTL D-ATIS ARR
133.8
JACK NORTHROP FIELD/HAWTHORNE MUNI ATIS
118.4
LOS ANGELES TOWER
(N) 133.9 239.3
(S) 120.95 379.1
HAWTHORNE TOWER ★
121.1 257.8

CERNL TRANSITION (CERNL.RYDRR1)
EESSA TRANSITION (EESSA.RYDRR1)
ELKEY TRANSITION (ELKEY.RYDRR1)
SNAXX TRANSITION (SNAXX.RYDRR1)



NOTE: RADAR required.
NOTE: RNAV 1.
NOTE: Turbojet and turboprop aircraft only.
NOTE: SNAXX and EESSA transitions DME/DME/IRU or GPS required.
NOTE: CERNL and ELKEY transitions GPS required.
NOTE: Procedure is only for use when Los Angeles landing west.
NOTE: LAX arrivals expect runway 24R unless otherwise assigned by ATC.

(CONTINUED ON FOLLOWING PAGE)

NOTE: Chart not to scale.

RYDRR ONE ARRIVAL (RNAV) Transition Routes

LOS ANGELES, CALIFORNIA