

# TUSTI TWO DEPARTURE (RNAV)

AL-237 (FAA)

LOS ANGELES INTL (LAX)  
LOS ANGELES, CALIFORNIA

**TOP ALTITUDE:**  
17000

**TAKEOFF MINIMUMS**

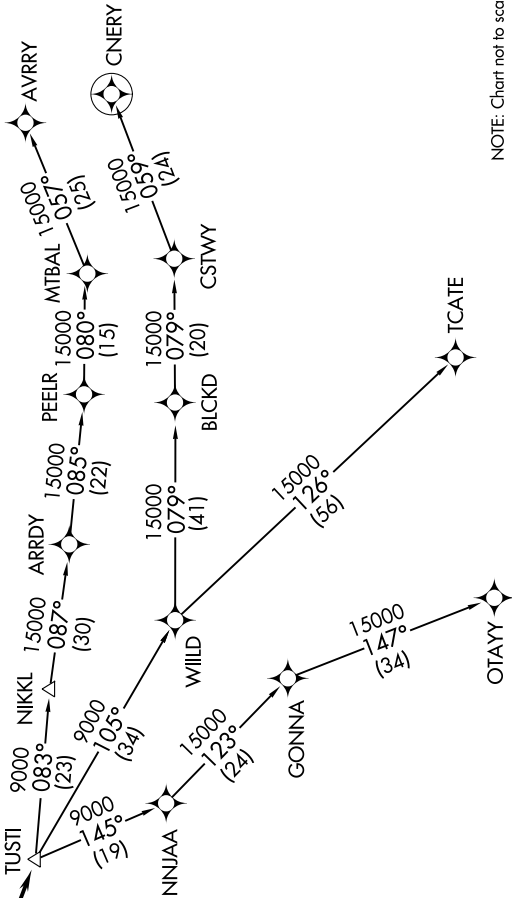
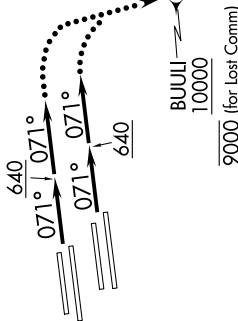
Rwys 6L/R, 7L/R: Standard with minimum climb of 500' per NM to 640.  
Rwys 24L/R, 25L/R: NA-ATC.

- NOTE: DME/DME/IRU or GPS required.
- NOTE: RNAV 1.
- NOTE: RADAR required.
- NOTE: Turbojet aircraft only.



D-ATIS DEP 135.65  
CLINC DEL 120.35 327.0  
CPDIC  
GND CON  
(N) 121.65 327.0  
(S) 121.75 327.0  
(W) 121.4 327.0  
LOS ANGELES TOWER  
(N) 133.9 239.3  
(S) 120.95 379.1  
SOCAL DEP CON  
(S) 124.3 363.2 (045°-224°)  
125.2 263.025 (225°-044°)

TTRUE   
LVELL   
WURMO



NOTE: Chart not to scale.

(NARRATIVE ON FOLLOWING PAGE)