

HI-ILS or LOC/DME RWY 25

LOC I-PMD 110.7	APCH CRS 251°	Rwy ldg THRE Arpt Elev 12,002 2499 2543
---------------------------	-------------------------	---

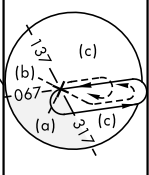
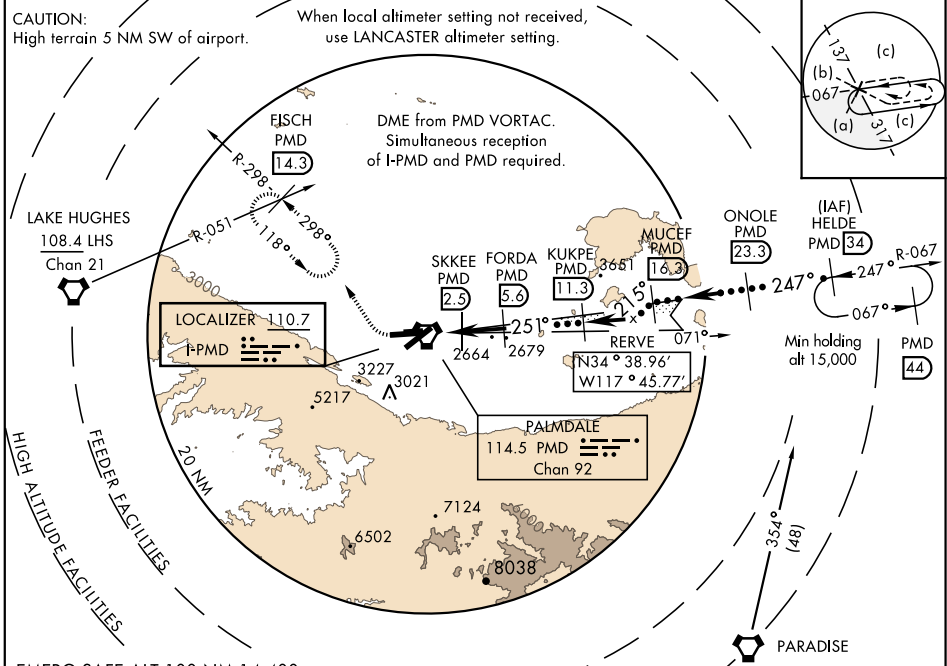
JAL-310 [USAF]

PALMDALE USAF PLANT 42 (KPMD)

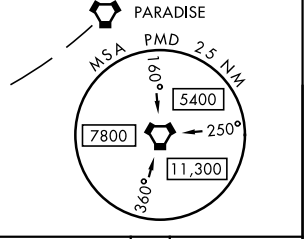
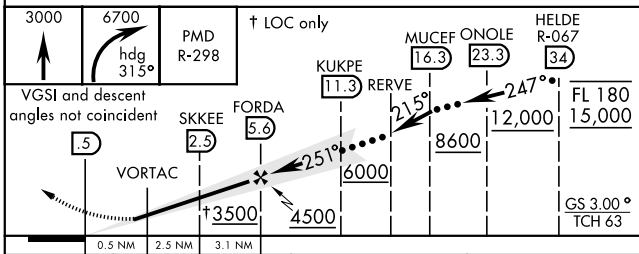
▼ * Circling S of Rwy 7-25 NA for CAT E aircraft.
Circling to Rwy 7 NA at night.

MISSED APPROACH: Climb to 3000 then climbing right turn to 6700 on heading 315° and PMD VORTAC R-298 to FISCH INT/PMD 14.3 DME and hold, continue climb-in-hold to 6700.

JOSHUA APP CON 124.55 363.0	PALMDALE TOWER ★ 123.7 (CTAF) 0 317.6	GND CON 121.9 348.6	ATIS 118.275
---------------------------------------	---	-------------------------------	------------------------

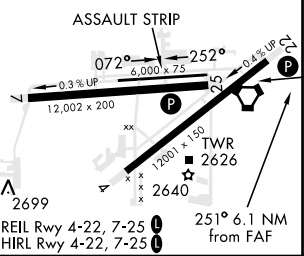


EMERG SAFE ALT 100 NM 14,400



ELEV 2543	THRE 2499
-----------	-----------

CATEGORY	C	D	E
S-ILS 25		2699-3/4 200 (200-3/4)	
S-LOC 25		2900-1 1/8 401 (400-1 1/8)	
CIRCLING *	3000-1 1/2	3100-2	3120-2
	457 (500-1 1/2)	557 (600-2)	577 (600-2)
LANCASTER ALTIMETER SETTING MINIMUMS			
S-ILS 25	2748-3/4	249 (300-3/4)	
S-LOC 25	2960-1 1/8	461 (500-1 1/8)	
CIRCLING *	3060-1 1/2	3160-2	3180-2 1/4
	517 (600-1 1/2)	617 (700-2)	637 (700-2 1/4)



HI-ILS or LOC/DME RWY 25

SW-3, 04 JAN 2018 to 01 FEB 2018

SW-3, 04 JAN 2018 to 01 FEB 2018