

LOC I-PMD 110.7	APP CRS 251°	Rwy Idg TDZE Apt Elev	12002 2503 2543
---------------------------	------------------------	-----------------------------	--

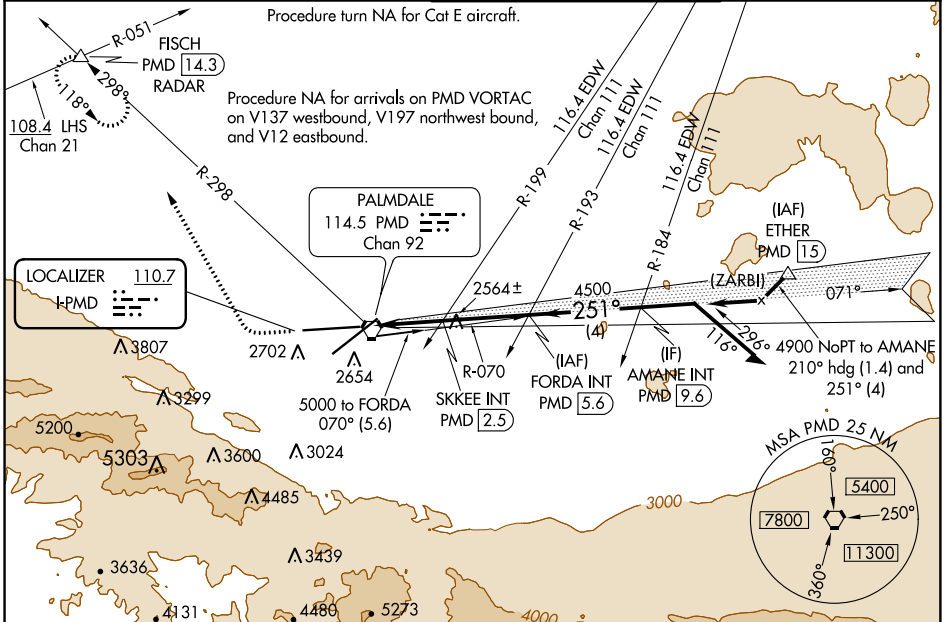
ILS or LOC RWY 25

PALMDALE USAF PLANT 42 (PMD)

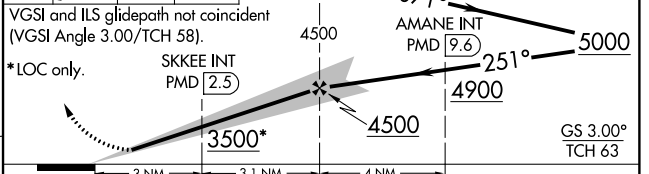
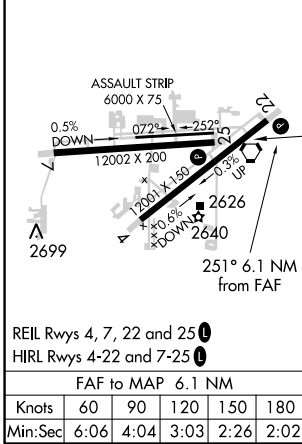
▼ Circling to Rwy 7 NA at night. Circling NA for Cat E south of Rwy 7-25. When local altimeter setting not received, use Lancaster altimeter setting and increase all DAs 49 feet and all MDAs 60 feet, and increase SKKEE fix minimums S-LOC 25 Cats C, D and E visibility ¼ mile and Circling Cat E ¼ mile.

▲ MISSED APPROACH: Climb to 3000 then climbing right turn to 6700 on heading 315° and on PMD VORTAC R-298 to FISCH INT/PMD 14.3 DME/RADAR and hold, continue climb-in-hold to 6700.

ATIS 118.275	JOSHUA APP CON 124.55 363.0	PALMDALE TOWER ★ 123.7 (CTAF) 0 317.6	GND CON 121.9 317.6
------------------------	---------------------------------------	---	-------------------------------



ELEV 2543	TDZE 2503	3000	6700	FISCH	FORDA INT PMD 5.6	Remain within 10 NM
-----------	-----------	------	------	-------	----------------------	---------------------



CATEGORY	A	B	C	D	E
S-ILS 25	2703-¾ 200 (200-¾)				
S-LOC 25	3500-1¼ 997 (1000-1¼)	3500-1½ 997 (1000-1½)	3500-3	997 (1000-3)	
CIRCLING	3500-1¼ 957 (1000-1¼)	3500-1½ 957 (1000-1½)	3500-3	957 (1000-3)	
SKKEE FIX MINIMUMS (DUAL VOR RECEIVERS OR DME REQUIRED)					
S-LOC 25	2900-1	397 (400-1)	2900-1½	397 (400-1½)	
CIRCLING	3000-1	457 (500-1)	3000-1½	3100-2	3120-2
			457 (500-1½)	557 (600-2)	577 (600-2)

SW-3, 04 JAN 2018 to 01 FEB 2018

SW-3, 04 JAN 2018 to 01 FEB 2018