

WAAS CH 86520 W25A	APP CRS 251°	Rwy Idg 12002 TDZE 2503 Apt Elev 2543
--	------------------------	--

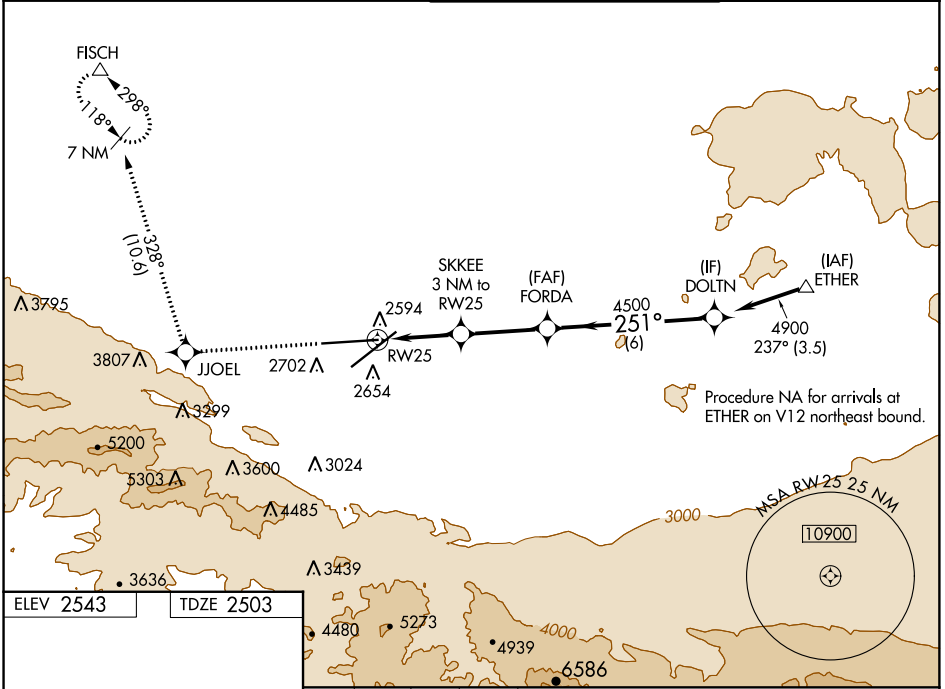
RNAV (GPS) RWY 25

PALMDALE USAF PLANT 42 (PMD)

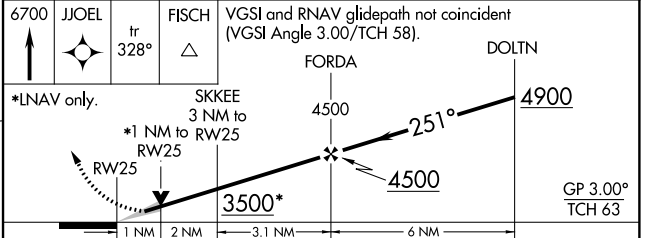
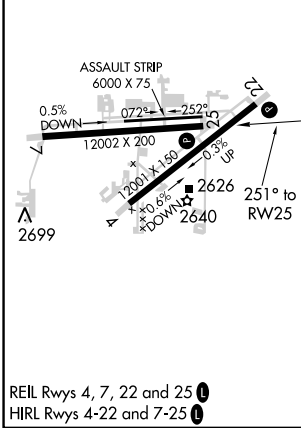
⚠ Circling to Rwy 7 NA at night. Baro-VNAV NA when using Lancaster altimeter setting. For uncompensated Baro-VNAV systems, LNAV/VNAV NA below -20°C (-4°F) or above 28°C (82°F). DME/DME RNP-0.3 NA. VDP NA with Lancaster altimeter setting. When local altimeter setting not received, use Lancaster altimeter setting and increase all DA 49 feet and all MDA 60 feet; increase LNAV/VNAV all Cats and LNAV Cat C and D visibility ¼ mile.

MISSED APPROACH:
Climb to 6700 direct JJOEL and on track 328° to FISCH and hold, continue climb-in-hold to 6700.

ATIS 118.275	JOSHUA APP CON 124.55 363.0	PALMDALE TOWER * 123.7 (CTAF) 0 317.6	GND CON 121.9 317.6
------------------------	---------------------------------------	---	-------------------------------



ELEV 2543	TDZE 2503
-----------	-----------



CATEGORY	A	B	C	D
LPV DA		2703- ³ / ₄	200 (200- ³ / ₄)	
LNAV/VNAV DA		2807- ⁷ / ₈	304 (300- ⁷ / ₈)	
LNAV MDA	2880-1	377 (400-1)	2880-1 ¹ / ₈	377 (400-1 ¹ / ₈)
CIRCLING	3000-1	457 (500-1)	3000-1 ¹ / ₂ 457 (500-1 ¹ / ₂)	3100-2 557 (600-2)

SW-3, 04 JAN 2018 to 01 FEB 2018

SW-3, 04 JAN 2018 to 01 FEB 2018