

VORTAC PMD 114.5 Chan 92	APP CRS 265°	Rwy Idg 12002 TDZE 2503 Apt Elev 2543
--	------------------------	--

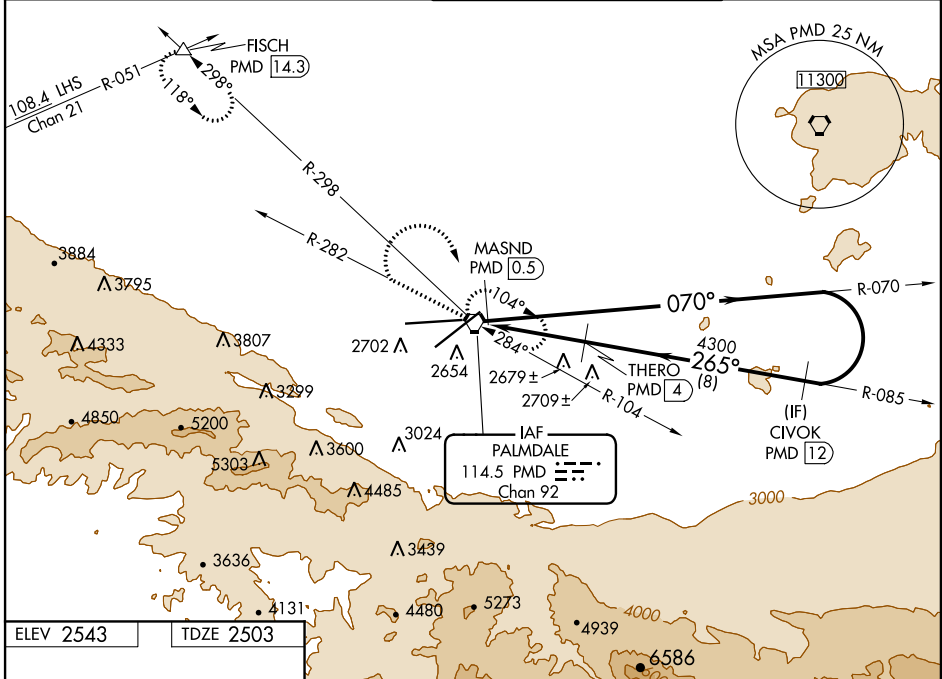
VOR/DME or TACAN RWY 25

PALMDALE USAF PLANT 42 (PMD)

▼ Circling to Rwy 7 NA at night. Circling NA for Cat E south of Rwy 7-25. When local altimeter setting not received, use Lancaster altimeter setting and increase all MDA 60 feet and increase S-25 Cat E visibility ¼ mile.

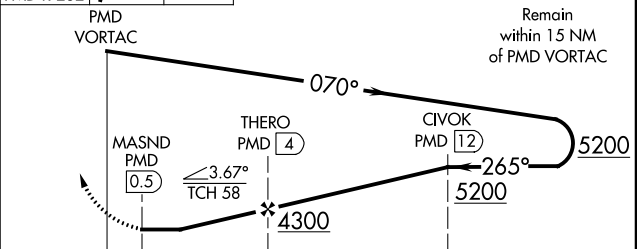
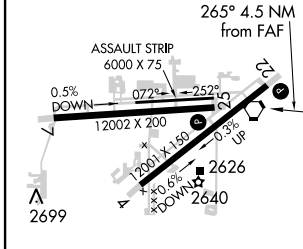
▲ MISSED APPROACH: Climb to 5000 via PMD VORTAC R-282 then climbing right turn to 7000 direct PMD VORTAC and hold (TACAN aircraft climbing right turn to 5000 via PMD VORTAC R-298 to FISCH/PMD 14.3 DME and hold SE left turn 298° inbound).

ATIS 118.275	JOSHUA APP CON 124.55 363.0	PALMDALE TOWER * 123.7 (CTAF) 0 317.6	GND CON 121.9 317.6
------------------------	---------------------------------------	---	-------------------------------



ELEV 2543	TDZE 2503
-----------	-----------

5000 7000 PMD
 ↑ PMD R-282 ↘ VOR/DME
 VGS1 and descent angles not coincident (VGS1 Angle 3.00/TCH 58).
 Remain within 15 NM of PMD VORTAC



REIL Rwy 4, 7, 22 and 25 HIRL Rwy 4-22 and 7-25	0	0			
CATEGORY	A	B	C	D	E
S-25	2940-1¼	437 (400-1¼)		2940-1½	437 (400-1½)
CIRCLING	3000-1¼	457 (500-1¼)	3000-1½	457 (500-1½)	3100-2 557 (600-2)

SW-3, 04 JAN 2018 to 01 FEB 2018

SW-3, 04 JAN 2018 to 01 FEB 2018