

HI-TACAN RWY 13

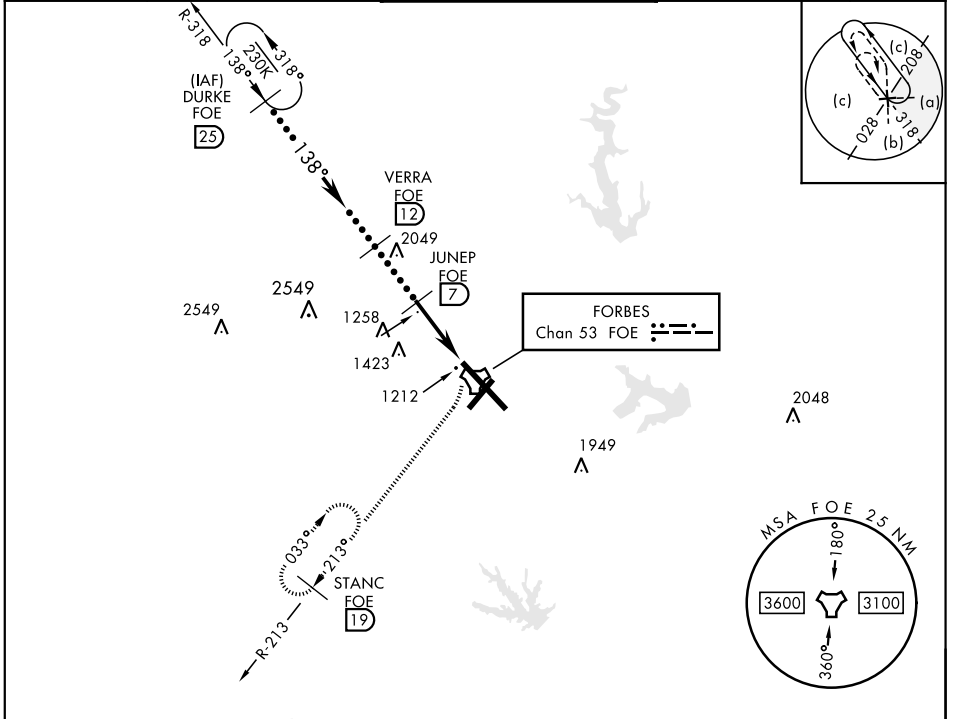
TACAN FOE Chan 53	APCH CRS 138°	Rwy ldg TDZE 12,803 1065 Arpt Elev 1078	JAL-424 [USAF]	TOPEKA RGNL (KFOE)
-----------------------------	-------------------------	--	----------------	--------------------

▼ * Inoperative table does not apply.

SALS **(A2)**

MISSED APPROACH: Climbing right turn to 3000 via FOE TACAN R-213 to STANC/19 DME and hold.

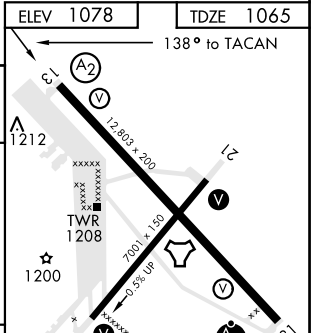
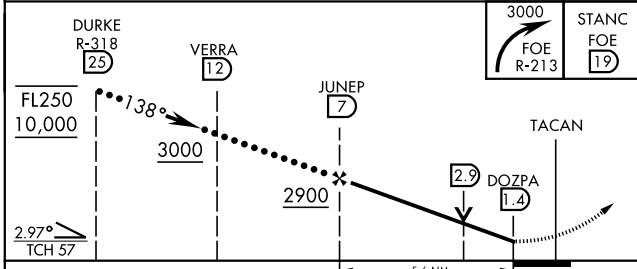
ATIS 128.25	KANSAS CITY CENTER 123.8 343.7	FORBES TOWER ★ 120.8 (CTAF) 340.2	GND CON 121.7 275.8	ASOS
-----------------------	--	---	-------------------------------	------



EMERG SAFE ALT 100 NM 3600

ELEV 1078 | TDZE 1065

138° to TACAN



CATEGORY	C	D	E
S-13 *	1600-1¼ 535 (600-1¼)	1600-1½ 535	(600-1½)
CIRCLING	1600-1½ 522 (600-1½)	1700-2 622 (700-2)	1720-2¼ 642 (700-2¼)

MIRL Rwy 3-21
REIL Rwy 3, 13, and 21
HIRL Rwy 13-31

HI-TACAN RWY 13

NC-2, 04 JAN 2018 to 01 FEB 2018

NC-2, 04 JAN 2018 to 01 FEB 2018