

HI-TACAN RWY 31

TACAN Chan 53	FOE	APCH CRS 304°	Rwy ldg TDZE 1037 Arprt Elev 1078
-------------------------	-----	-------------------------	---

JAL-424 [USAF]

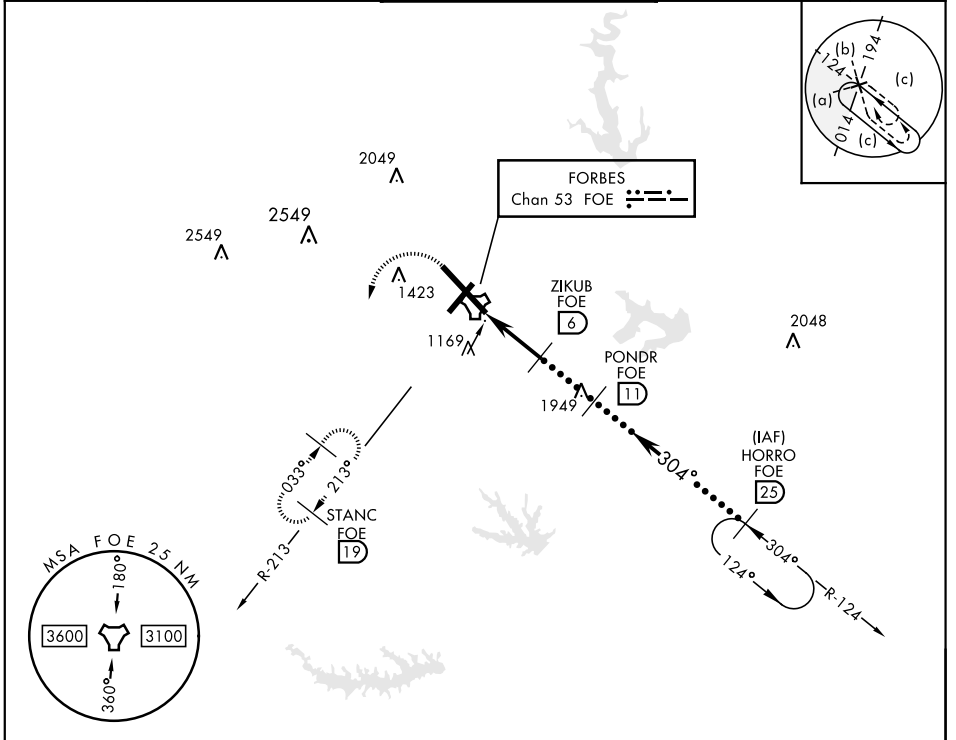
TOPEKA RGNL (KFOE)

▼ * For ALS inop, increase CAT CDE vis to 1 3/8.

MALSRR

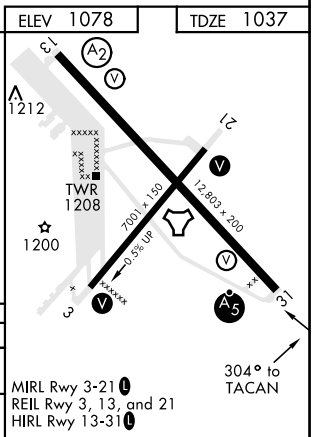
MISSED APPROACH: Climbing left turn to 3000 via heading 190° and FOE TACAN R-213 to STANC/19 DME and hold.

ATIS 128.25	KANSAS CITY CENTER 123.8 343.7	FORBES TOWER ★ 120.8 (CTAF) 340.2	GND CON 121.7 275.8	ASOS
-----------------------	--	---	-------------------------------	------



EMERG SAFE ALT 100 NM 3600

3000 FOE R-213	STANC FOE (19)	PONDNR (11)	ZIKUB (6)	HORRO R-124 (25)
TACAN	BUMKE (8)	2700	3000	FL 250, 10,000
CATEGORY		C	D	E
S-31*	1520/50 483 (500-1)			
CIRCLING	1580-1 1/2 502 (600-1 1/2)	1700-2 622 (700-2)	1720-2 1/4 642 (700-2 1/4)	



HI-TACAN RWY 31

NC-2, 04 JAN 2018 to 01 FEB 2018

NC-2, 04 JAN 2018 to 01 FEB 2018