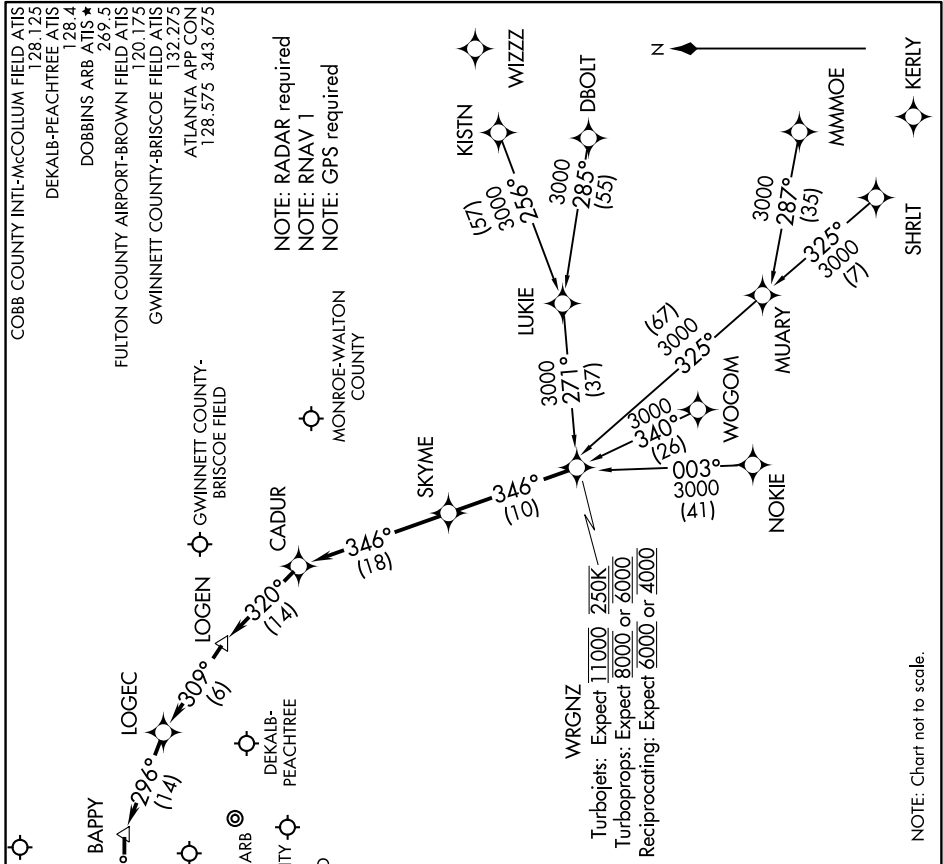


SE-4, 04 JAN 2018 to 01 FEB 2018



NOTE: Chart not to scale.

SE-4, 04 JAN 2018 to 01 FEB 2018

**ARRIVAL ROUTE DESCRIPTION**

DBOLT TRANSITION (DBOLT.WRGNZ1)  
KISTN TRANSITION (KISTN.WRGNZ1)  
LUKIE TRANSITION (LUKIE.WRGNZ1)  
MMMOE TRANSITION (MMMOE.WRGNZ1)  
NOKIE TRANSITION (NOKIE.WRGNZ1)  
SHRLT TRANSITION (SHRLT.WRGNZ1)  
WOGOM TRANSITION (WOGOM.WRGNZ1)

From WRGNZ on track 346° to SKYME, then on track 346° to CADUR, then on track 320° to LOGEN, then on track 309° to BAPPY, then on track 296° to LOGEC, then on track 275° to DECLIN, then on track 275°. Expect RADAR vectors to final approach course.

**LOST COMMUNICATIONS:** Cross WRGNZ at or below 11000, cross CADUR at or below 7000, cross DECLIN at 4000; after DECLIN proceed direct to desired approach IAF for filed airport.