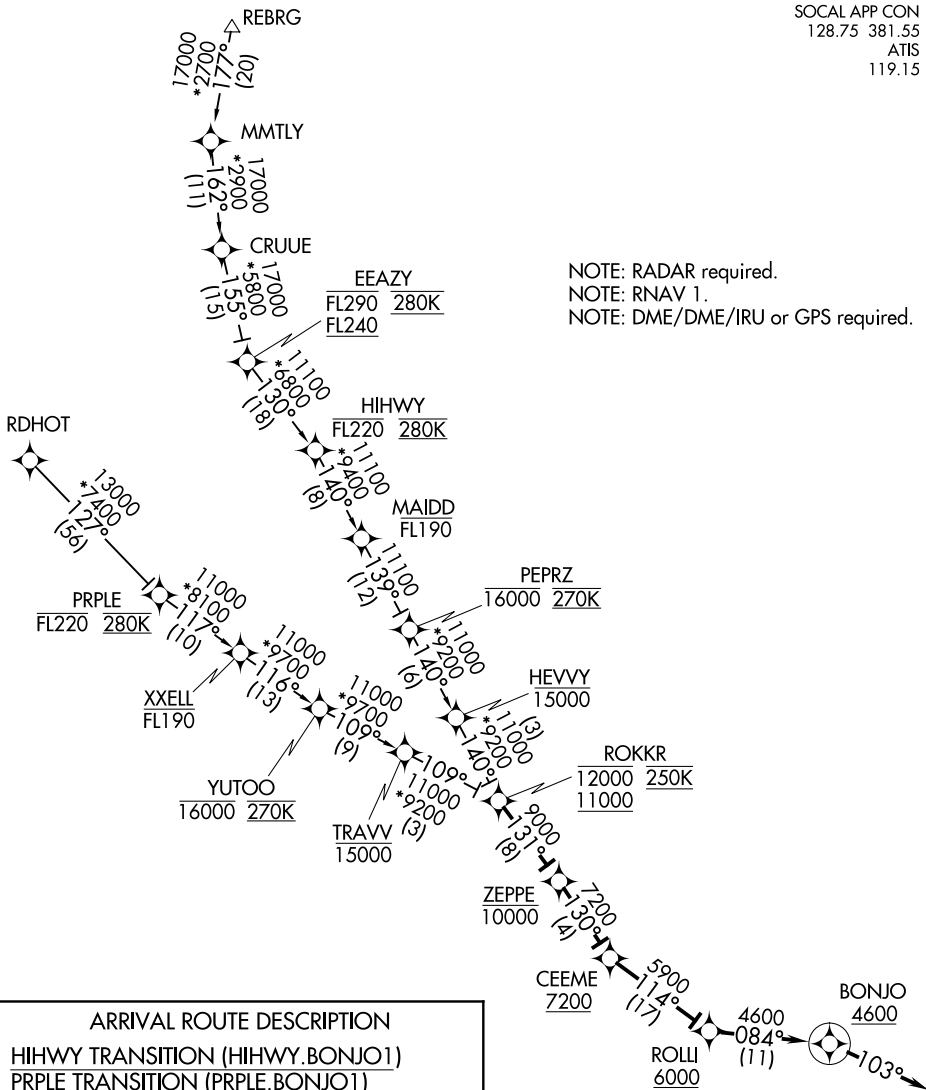


BONJO ONE ARRIVAL (RNAV)

SOCAL APP CON
128.75 381.55
ATIS
119.15

NOTE: RADAR required.
NOTE: RNAV 1.
NOTE: DME/DME/IRU or GPS required.



ARRIVAL ROUTE DESCRIPTION

- HIHWY TRANSITION (HIHWY.BONJO1)
- PRPLE TRANSITION (PRPLE.BONJO1)
- RDHOT TRANSITION (RDHOT.BONJO1)
- REBRG TRANSITION (REBRG.BONJO1)

From ROKKR on track 131° to cross ZEPPE at or below 10000, then on track 130° to cross CEEME at or above 7200, then on track 114° to cross ROLLI at or above 6000, then on track 084° to cross BONJO at or above 4600, then on track 103°.
Expect RADAR vectors to final approach course.

NOTE: Chart not to scale.

BONJO ONE ARRIVAL (RNAV)

(ROKKR.BONJO1) 02MAR17

SW-3, 04 JAN 2018 to 01 FEB 2018

SW-3, 04 JAN 2018 to 01 FEB 2018