

CHOII ONE DEPARTURE (RNAV)

AL-5023 (FAA)

SANTA MONICA MUNI (SMO)
SANTA MONICA, CALIFORNIA

SW-3, 04 JAN 2018 to 01 FEB 2018

ATIS 119.15
SANTA MONICA TOWER ★ 120.1 257.8
SOCAL DEP CON 135.05 317.5

NOTE: RNAV 1.

NOTE: DME/DME/IRU or GPS required.

NOTE: RADAR required.

NOTE: Turbojet and turboprop aircraft only.

NOTE: Turbojets only on HEC, MISEN, and LAS TRANSITIONS.

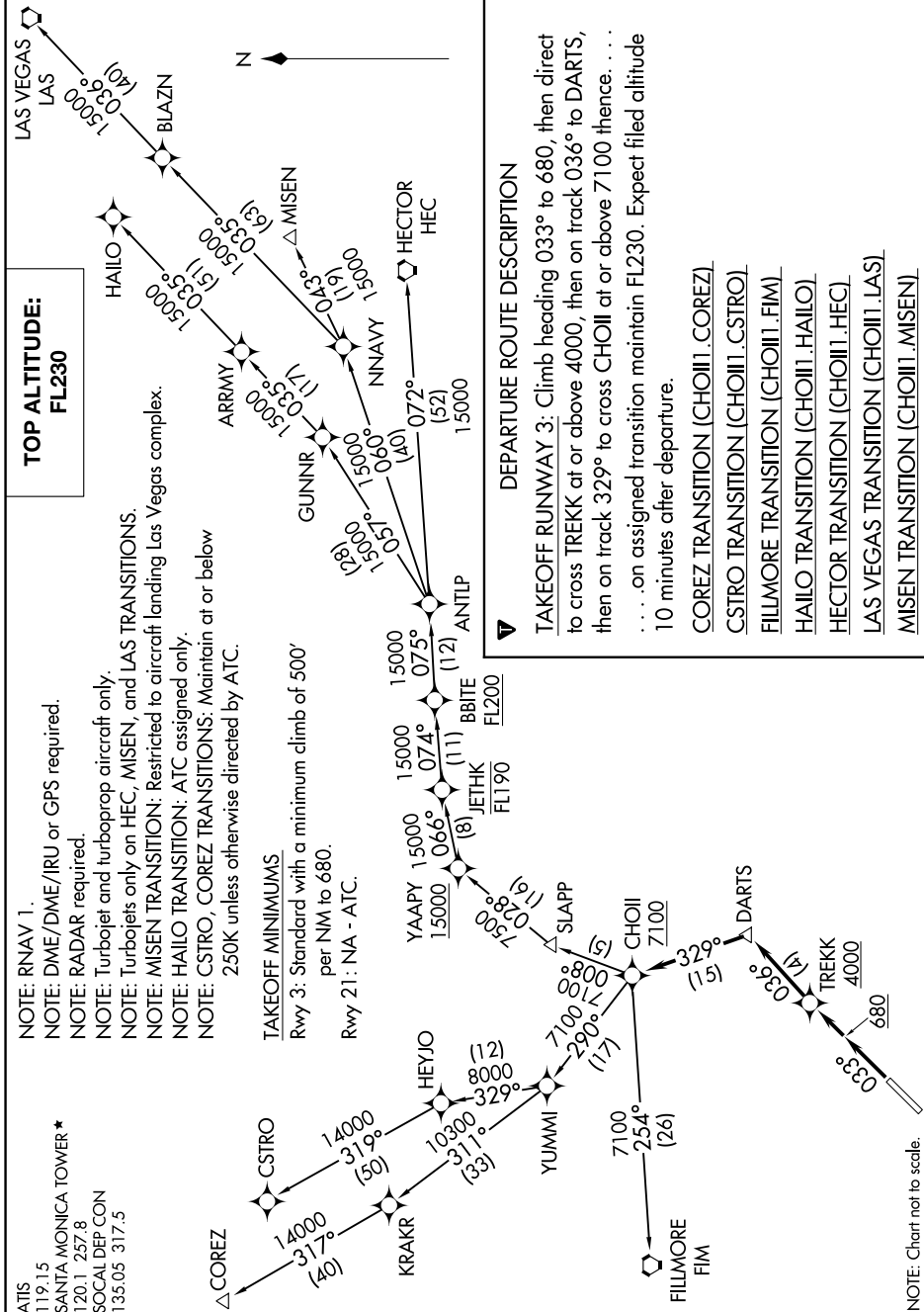
NOTE: MISEN TRANSITION: Restricted to aircraft landing Las Vegas complex.

NOTE: HALLO TRANSITION: ATC assigned only.

NOTE: CSTRO, COREZ TRANSITIONS: Maintain at or below 250K unless otherwise directed by ATC.

TAKEOFF MINIMUMS
Rwy 3: Standard with a minimum climb of 500' per NM to 680.
Rwy 21: NA - ATC.

TOP ALTITUDE:
FL230



DEPARTURE ROUTE DESCRIPTION

TAKEOFF RUNWAY 3: Climb heading 033° to 680, then direct to cross TREKK at or above 4000, then on track 036° to DARTS, then on track 329° to cross CHOII at or above 7100 thence. . . . on assigned transition maintain FL230. Expect filed altitude 10 minutes after departure.

- COREZ TRANSITION (CHOII . COREZ)
- CSTRO TRANSITION (CHOII . CSTRO)
- FILLMORE TRANSITION (CHOII . FIM)
- HALLO TRANSITION (CHOII . HALLO)
- HECTOR TRANSITION (CHOII . HEC)
- LAS VEGAS TRANSITION (CHOII . LAS)
- MISEN TRANSITION (CHOII . MISEN)

NOTE: Chart not to scale.

SW-3, 04 JAN 2018 to 01 FEB 2018

CHOII ONE DEPARTURE (RNAV)

(CHOII .CHOII) 02MAR17

SANTA MONICA, CALIFORNIA
SANTA MONICA MUNI (SMO)