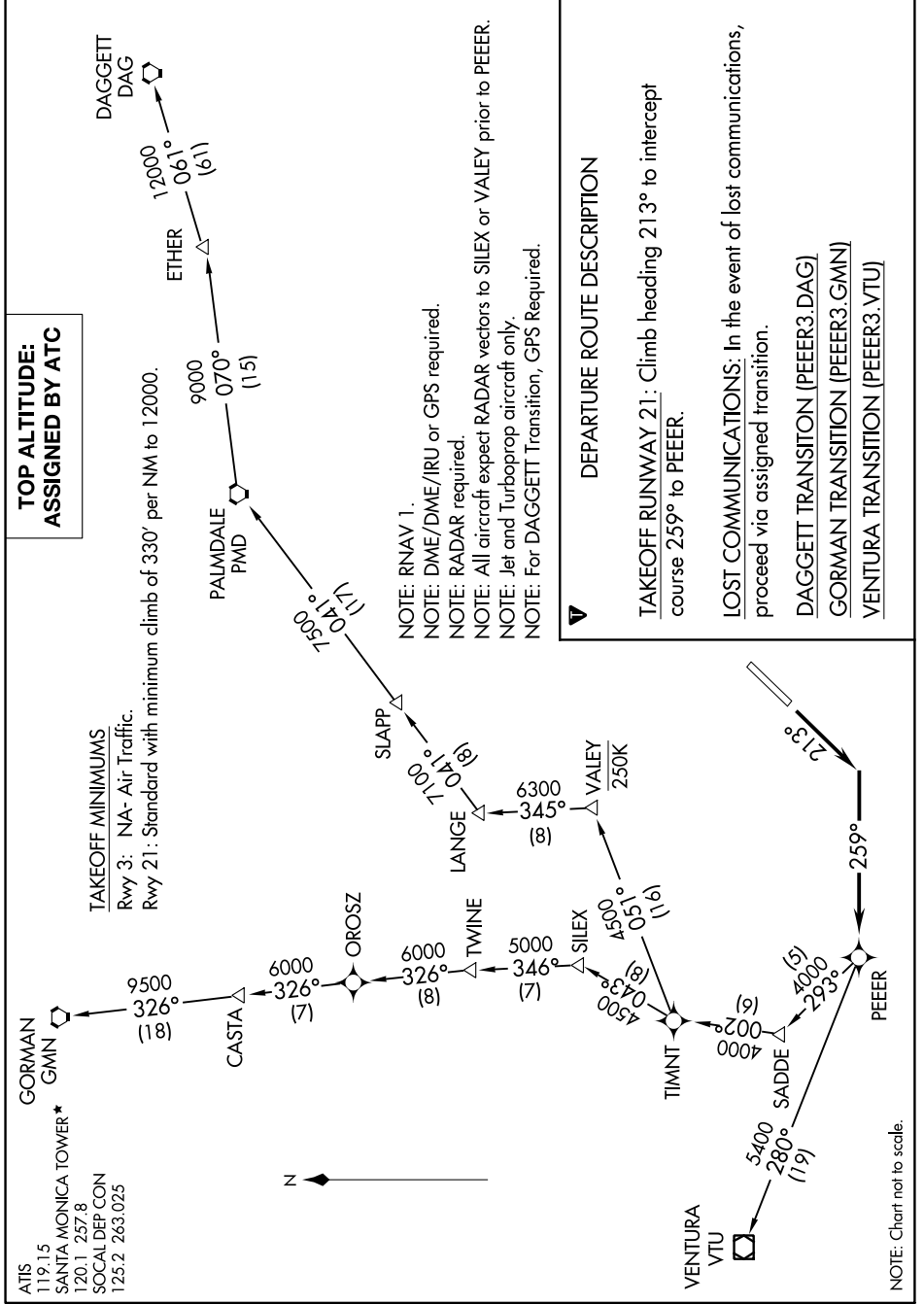


SW-3, 04 JAN 2018 to 01 FEB 2018



**TOP ALTITUDE:
ASSIGNED BY ATC**

TAKEOFF MINIMUMS

Rwy 3: NA- Air Traffic.

Rwy 21: Standard with minimum climb of 330' per NM to 12000.

- NOTE: RNAV 1.
- NOTE: DME/DME/IRU or GPS required.
- NOTE: RADAR required.
- NOTE: All aircraft expect RADAR vectors to SILEX or VALLEY prior to PEER.
- NOTE: Jet and Turboprop aircraft only.
- NOTE: For DAGGETT Transition, GPS Required.

DEPARTURE ROUTE DESCRIPTION

TAKEOFF RUNWAY 21: Climb heading 213° to intercept course 259° to PEER.

LOST COMMUNICATIONS: In the event of lost communications, proceed via assigned transition.

DAGGETT TRANSITION (PEER3.DAG)

GORMAN TRANSITION (PEER3.GMN)

VENTURA TRANSITION (PEER3.VTU)

SW-3, 04 JAN 2018 to 01 FEB 2018