

WAAS CH 90339 W21A	APP CRS 216°	Rwy Idg TDZE Apt Elev	3500 177 177
--	------------------------	-----------------------------	---

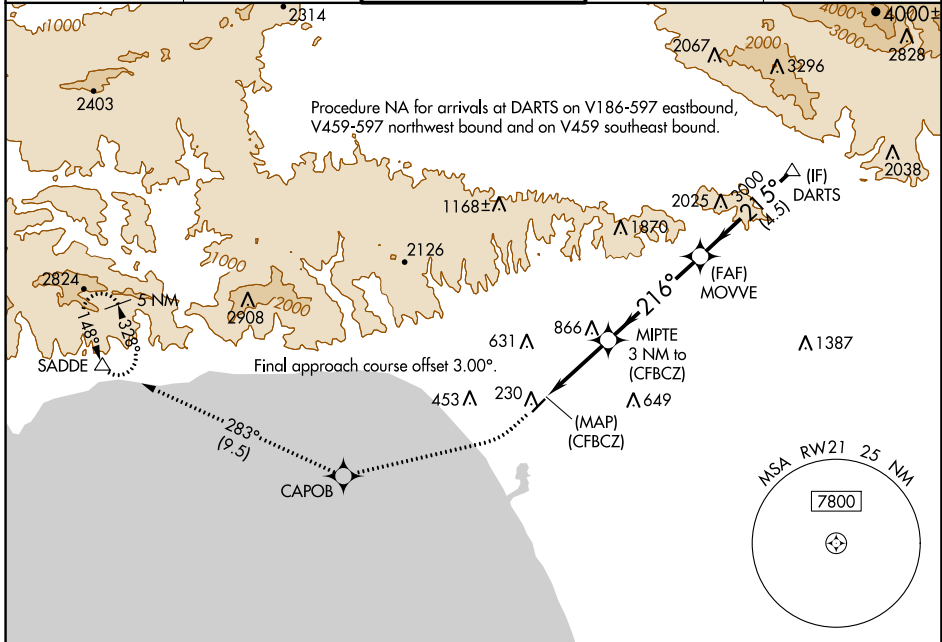
RNAV (GPS) RWY 21

SANTA MONICA MUNI (SMO)

⚠ For uncompensated Baro-VNAV systems, LNAV/VNAV NA below 5°C (41°F) or above 14°C (58°F). Rwy 21 helicopter visibility reduction below ¾ NA. DME/DME RNP-0.3 NA.

⚠ MISSED APPROACH: Climb to 600 then climbing right turn to 5000 direct CAPOB and on track 283° to SADDE and hold, continue climb-in-hold to 5000.

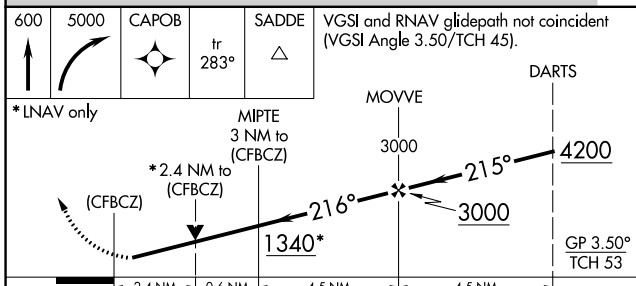
ATIS 119.15	SOCAL APP CON 128.5 235.975	SANTA MONICA TOWER * 120.1 (CTAF) 257.8	GND CON 121.9	UNICOM 122.95
-----------------------	---------------------------------------	---	-------------------------	-------------------------



SW-3, 04 JAN 2018 to 01 FEB 2018

SW-3, 04 JAN 2018 to 01 FEB 2018

RADAR REQUIRED



ELEV 177	TDZE 177
----------	----------

MIRA Rwy 3-21
REIL Rwy 3 and 21