

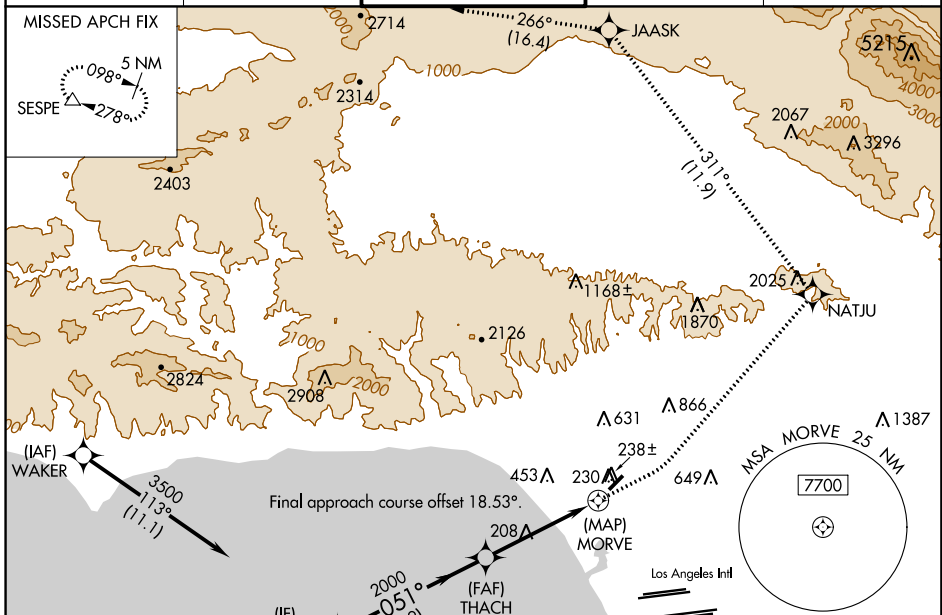
WAAS CH 50339 W03A	APP CRS 051°	Rwy Idg TDZE 154 Apt Elev 177	3500
--	------------------------	---	-------------

RNAV (GPS) Y RWY 3

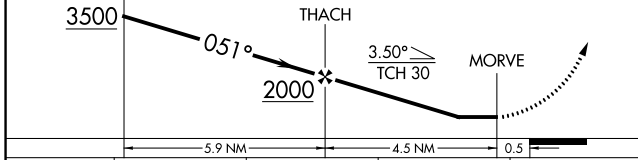
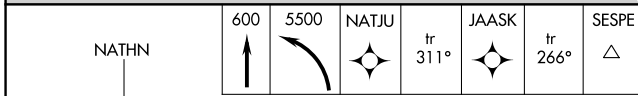
SANTA MONICA MUNI (SMO)

<p>⚠ Rwy 3 helicopter visibility reduction below 1 SM NA. DME/DME RNP-0.3 NA. Procedure NA at night.</p>	<p>MISSED APPROACH: Climb to 600 then climbing left turn to 5500 direct NATJU and track 311° to JAASK and track 266° to SESPE and hold. *Missed approach requires minimum climb of 300 feet per NM to 2400.</p>			

ATIS 119.15	SOCAL APP CON 128.5 235.975	SANTA MONICA TOWER * 120.1 (CTAF) 0 257.8	GND CON 121.9	UNICOM 122.95
-----------------------	---------------------------------------	---	-------------------------	-------------------------



ELEV 177	TDZE 154	211±A
----------	----------	-------



CATEGORY	A	B	C	D
LP MDA*	460-1 306 (300-1)			
LP MDA	920-1 766 (800-1)	920-1¼ 766 (800-1¼)	920-2½ 766 (800-2½)	
LNAV MDA*	500-1 346 (400-1)			
LNAV MDA	1020-1 866 (900-1)	1020-1¼ 866 (900-1¼)	1020-2½ 866 (900-2½)	

MIRL Rwy 3-21
REIL Rws 3 and 21

SW-3, 04 JAN 2018 to 01 FEB 2018

SW-3, 04 JAN 2018 to 01 FEB 2018