

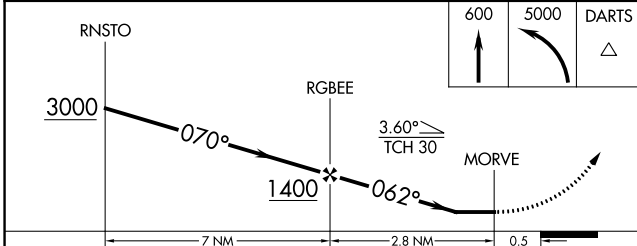
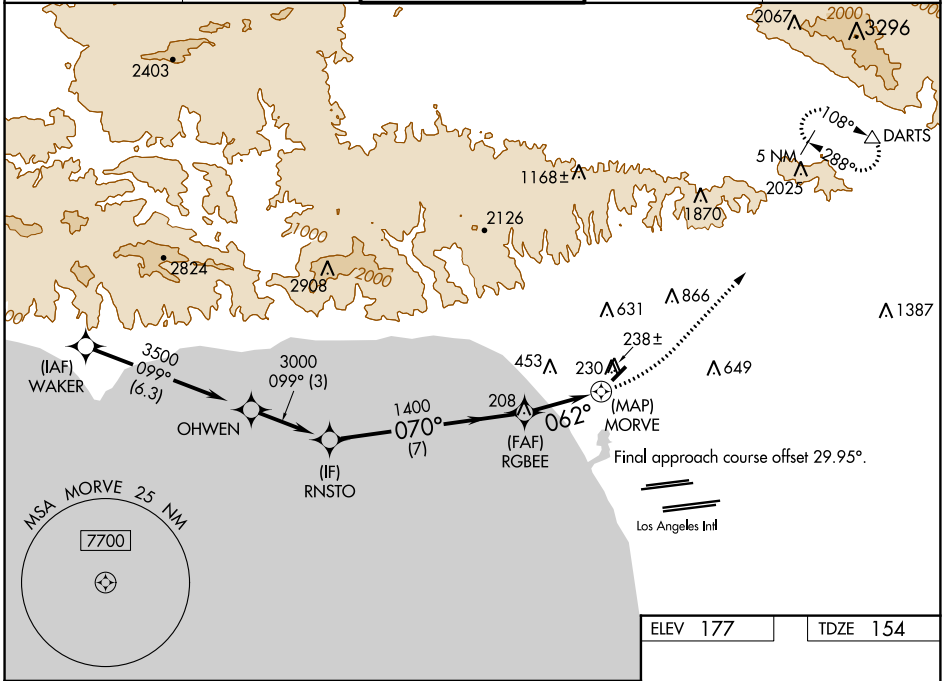
WAAS CH 77839 W03B	APP CRS 062°	Rwy Ldg TDZE 154 Apt Elev 177
--	------------------------	---

RNAV (GPS) Z RWY 3

SANTA MONICA MUNI (SMO)

<p>▽ Rwy 3 helicopter visibility reduction below 1 SM NA. ▲ DME/DME RNP-0.3 NA. Procedure NA at night.</p>	<p>MISSED APPROACH: Climb to 600 then climbing left turn to 5000 direct DARTS and hold, do not exceed 175K when continuing climb-in-hold to 5000. * Missed approach requires minimum climb of 290 feet per NM to 3800.</p>
--	--

ATIS 119.15	SOCAL APP CON 128.5 235.975	SANTA MONICA TOWER * 120.1 (CTAF) 257.8	GND CON 121.9	UNICOM 122.95
-----------------------	---------------------------------------	---	-------------------------	-------------------------



ELEV 177	TDZE 154
----------	----------

CATEGORY	A	B	C	D
LP MDA*	460-1	306 (300-1)		NA
LP MDA	1260-1¼ 1106 (1100-1¼)	1260-1½ 1106 (1100-1½)		NA
LNAV MDA*	500-1	346 (400-1)		NA
LNAV MDA	1380-1¼ 1226 (1300-1¼)	1380-1½ 1226 (1300-1½)		NA

211±A

TWR 246
RWY 3: 3500 x 150
RWY 25: 1226 UP
RWY 225: 225

MIRL Rwy 3-21
REIL Rwys 3 and 21

SW-3, 04 JAN 2018 to 01 FEB 2018

SW-3, 04 JAN 2018 to 01 FEB 2018