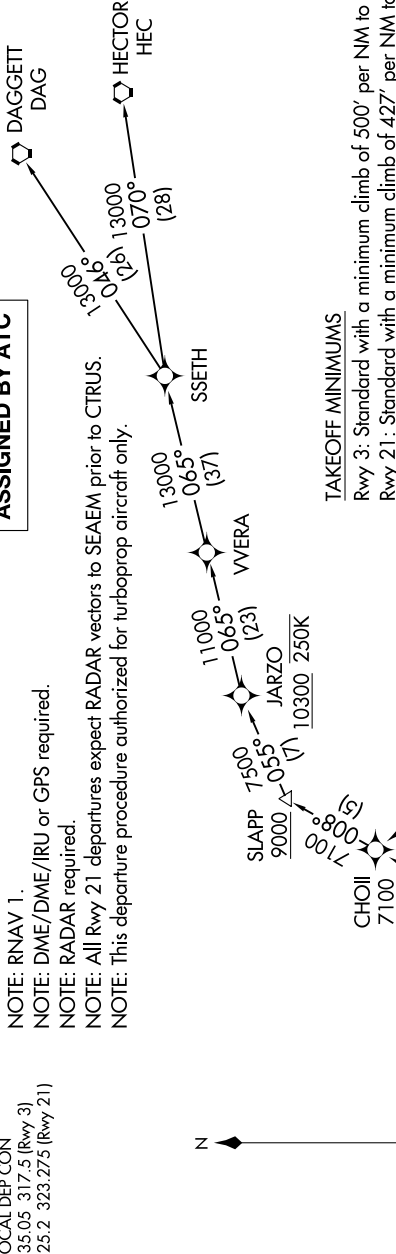


SANTA MONICA TWO DEPARTURE (RNAV)

SW-3, 04 JAN 2018 to 01 FEB 2018

SANTA MONICA TOWER ★
120.1 257.8
SOCAL DEP CON
135.05 317.5 (Rwy 3)
125.2 323.275 (Rwy 21)

NOTE: RNAV 1.
NOTE: DME/DME/IRU or GPS required.
NOTE: RADAR required.
NOTE: All Rwy 21 departures expect RADAR vectors to SEAEM prior to CTRUS.
NOTE: This departure procedure authorized for turboprop aircraft only.



TAKEOFF MINIMUMS

Rwy 3: Standard with a minimum climb of 500' per NM to 680.
Rwy 21: Standard with a minimum climb of 427' per NM to 700.

DEPARTURE ROUTE DESCRIPTION

TAKEOFF RUNWAY 3: Climb heading 033° to 680, then direct to cross TREKK at or above 4000, then on track 036° to DARTS, then on track 329° to cross CHOII at or above 7100, thence . . .

TAKEOFF RUNWAY 21: Climb heading 213° to intercept course 260° to WRASH, then on track 262° to cross CTRUS at or above 5000, then on track 350° to cross DZINE at or above 6000, then on track 042° to SEAEM, then on track 008° to cross CHOII at or above 7100, thence . . .

. . . on assigned transition maintain altitude assigned by ATC, expect filed altitude 10 minutes after departure.

DAGGETT TRANSITION (SMO2.DAG)

HECTOR TRANSITION (SMO2.HEC)

NOTE: Chart not to scale.

SW-3, 04 JAN 2018 to 01 FEB 2018

SANTA MONICA TWO DEPARTURE (RNAV)

(SMO2.CHOII) 12OCT17