

LOC I-VKE <b>108.7</b>	APP CRS <b>311°</b>	Rwy Idg TDZE Apt Elev	<b>6401</b> <b>1450</b> <b>1470</b>
---------------------------	------------------------	-----------------------------	---

# ILS or LOC/DME RWY 31

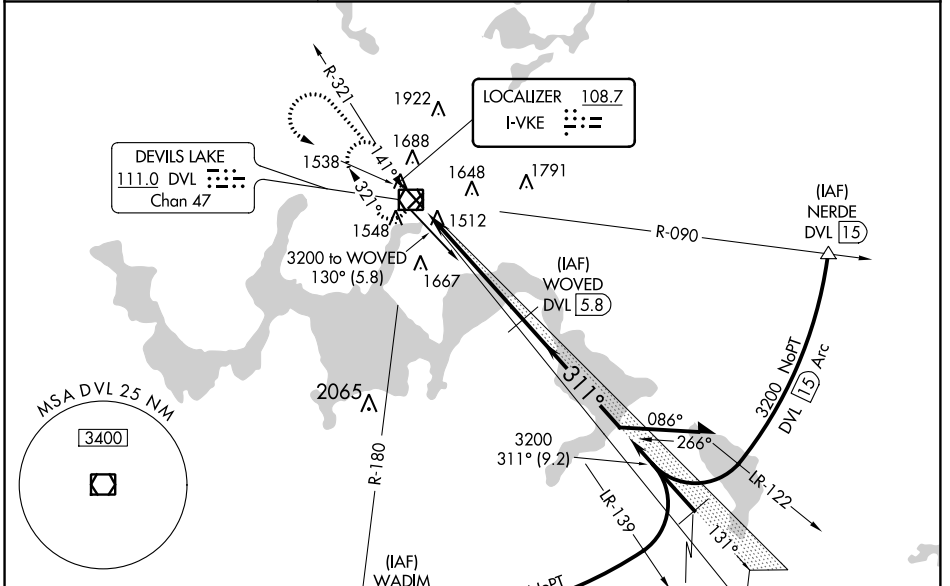
DEVILS LAKE RGNL (DVL)

**NA** When local altimeter setting not received, use Cando altimeter setting and increase all DA 63 feet and all MDA 80 feet and increase S-LOC 31 Cat C/D and Circling Cat C/D visibility 1/4 mile. For inop MALSRS when using Cando altimeter setting, increase S-ILS 31 all Cats visibility to 3/8 mile and S-LOC 31 Cat C/D to 1/2 mile. DME from DVL VOR/DME. Simultaneous reception of I-VKE and DVL DME required.

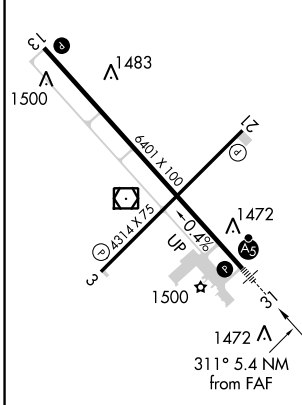


**MISSED APPROACH:** Climb to 3200 then left turn direct DVL VOR/DME and hold.

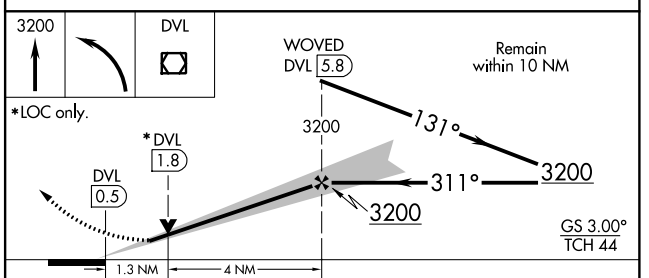
AWOS-3PT <b>125.875</b>	GRAND FORKS RADIO <b>122.3</b>	UNICOM <b>122.8 (CTAF)</b>
----------------------------	-----------------------------------	-------------------------------



ELEV 1470	TDZE 1450
-----------	-----------



HIRL Rwy 13-31  
REIL Rwy 3, 13 and 21  
MIRL Rwy 3-21



CATEGORY	A	B	C	D
S-ILS 31		1650-1/2	200 (200-1/2)	
S-LOC 31		1780-1/2	330 (400-1/2)	
<b>C</b> CIRCLING	2000-1	530 (600-1)	2240-2 1/4 770 (800-2 1/4)	2240-2 1/2 770 (800-2 1/2)

NC-1, 04 JAN 2018 to 01 FEB 2018

NC-1, 04 JAN 2018 to 01 FEB 2018