

WAAS CH <b>78417</b> <b>W21A</b>	APP CRS <b>218°</b>	Rwy Idg TDZE Apt Elev	<b>4314</b> <b>1449</b> <b>1470</b>
--	------------------------	-----------------------------	---

# RNAV (GPS) RWY 21

DEVILS LAKE RGNL (DVL)

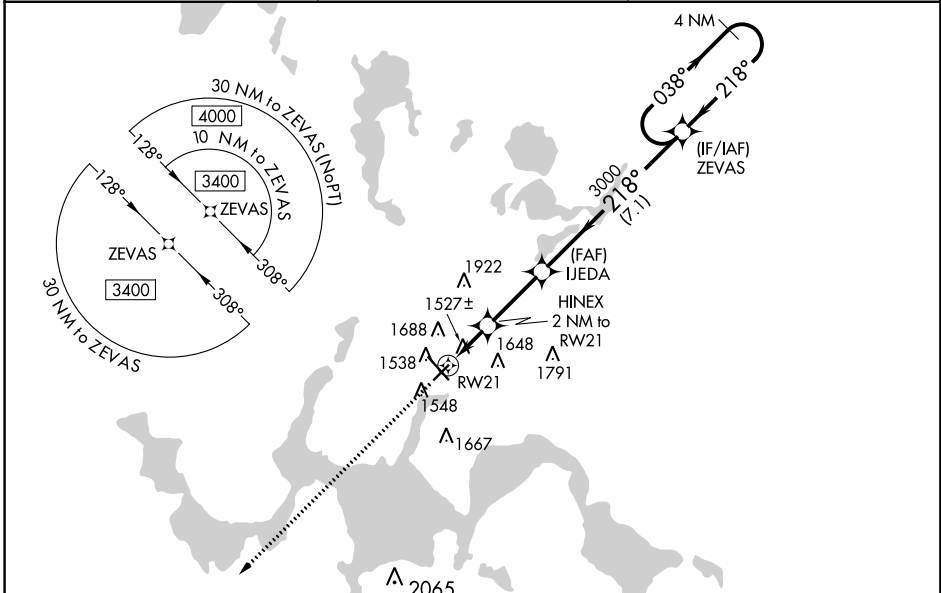
**⚠** For uncompensated Baro-VNAV systems, LNAV/VNAV NA below -17°C (2°F) or above 54°C (130°F). DME/DME RNP-0.3 NA. Helicopter visibility reduction below 3/4 SM NA. Baro-VNAV NA when using Cando altimeter setting. VDP NA with Cando altimeter setting. When local altimeter setting not received, use Cando altimeter setting and increase all DA 63 feet, and all MDA 80 feet, increase LNAV and Circling Cats C and D visibility 1/4 mile.

**MISSED APPROACH:** Climb to 3400 direct ZIKID and hold.

AWOS-3PT  
**125.875**

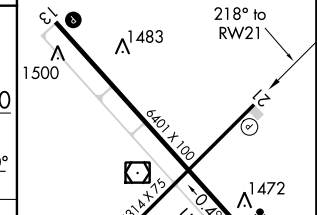
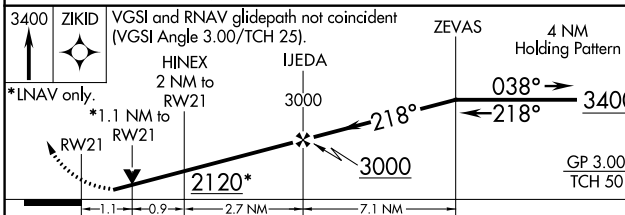
GRAND FORKS RADIO  
**122.3**

UNICOM  
**122.8 (CTAF) ①**



3400	ZIKID	VGS1 and RNAV glidepath not coincident (VGS1 Angle 3.00/TCH 25).	ZEVAS	4 NM Holding Pattern
*LNAV only.	HINEX 2 NM to RW21	IJEDA 3000		
	*1.1 NM to RW21			

ELEV 1470	① TDZE 1449
-----------	-------------



CATEGORY	A	B	C	D
LPV DA		1699-1	250 (300-1)	
LNAV/VNAV DA		1699-1	250 (300-1)	
LNAV MDA		1800-1	351 (400-1)	
<b>①</b> CIRCLING	2000-1	530 (600-1)	2240-2 1/4 770 (800-2 1/4)	2240-2 1/2 770 (800-2 1/2)

HIRL Rwy 13-31 ①  
REIL Rwy 3, 13 and 21 ①  
MIRL Rwy 3-21 ①

NC-1, 04 JAN 2018 to 01 FEB 2018

NC-1, 04 JAN 2018 to 01 FEB 2018