

VOR/DME DVL 111.0 Chan 47	APP CRS 030°	Rwy Idg 4314 TDZE 1450 Apt Elev 1470
---	------------------------	---

VOR RWY 3

DEVILS LAKE RGNL (DVL)

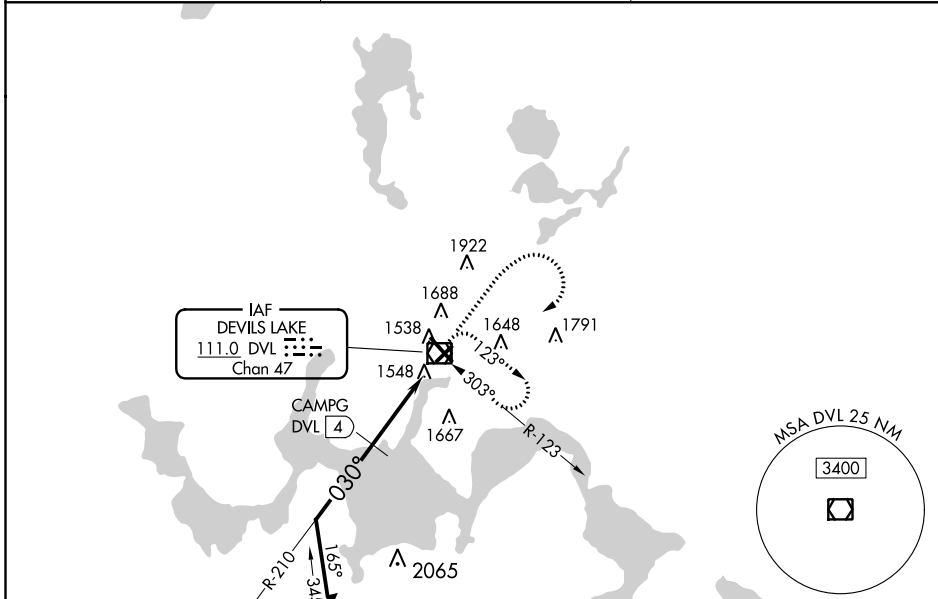
⚠ When local altimeter setting not received, use Cando altimeter setting and increase all MDA 80 feet, increase S-3 Cat A and Circling Cat C visibility ¼ mile, increase CAMPG FIX MINIMUMS S-3 Cats C/D visibility ¾ mile and Circling Cats C/D ¼ mile. Helicopter visibility reduction below 1 SM NA.

MISSED APPROACH: Climb to 3000 then climbing right turn to 3500 direct DVL VOR/DME and hold.

AWOS-3PT
125.875

GRAND FORKS RADIO
122.3

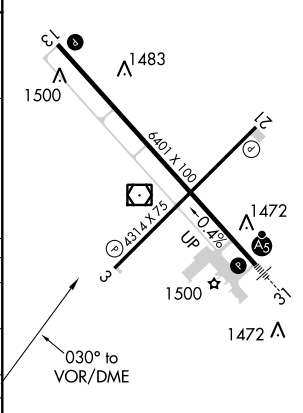
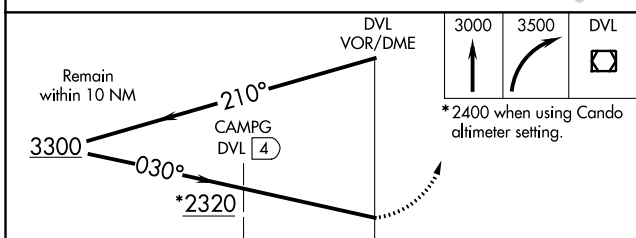
UNICOM
122.8 (CTAF) 0



NC-1, 04 JAN 2018 to 01 FEB 2018

NC-1, 04 JAN 2018 to 01 FEB 2018

ELEV 1470 **D** TDZE 1450



CATEGORY	A	B	C	D
S-3	2320-1 870 (900-1)	2320-1¼ 870 (900-1¼)	2320-2½ 870 (900-2½)	2320-2¾ 850 (900-2¾)
C CIRCLING	2320-1¼ 850 (900-1¼)	2320-2½ 850 (900-2½)	2320-2¾ 850 (900-2¾)	
CAMPG FIX MINIMUMS				
S-3	1820-1 370 (400-1)			
C CIRCLING	2000-1 530 (600-1)	2240-2¼ 770 (800-2¼)	2240-2½ 770 (800-2½)	

HIRL Rwy 13-31 **0**
REIL Rwys 3, 13, and 21 **0**
MIRL Rwy 3-21 **0**