

AL-5369 (FAA)

# RNAV (GPS) RWY 23

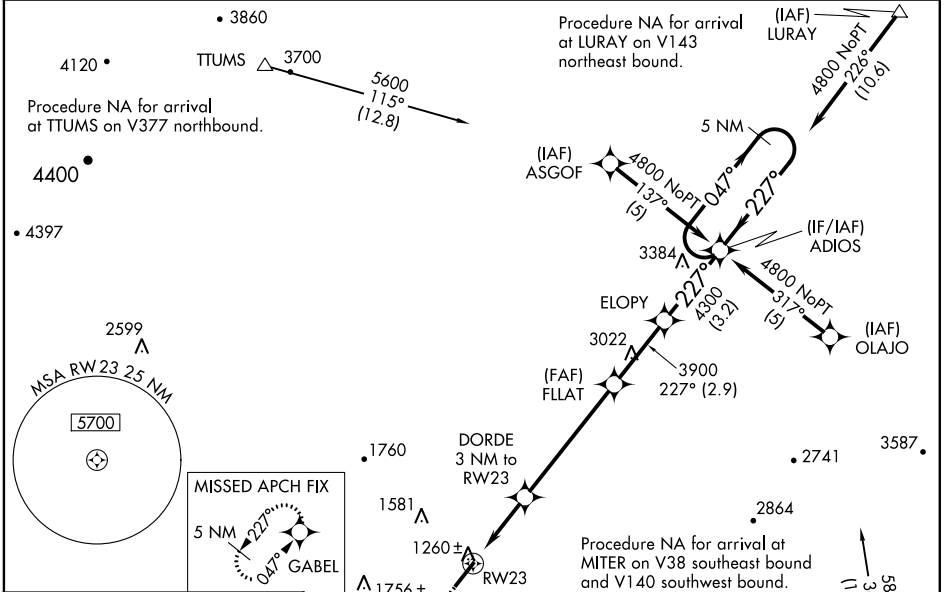
SHENANDOAH VALLEY RGNL (SHD)

WAAS CH <b>78113</b> <b>W23A</b>	APP CRS <b>227°</b>	Rwy Idg TDZE Apt Elev	<b>6002</b> <b>1201</b> <b>1201</b>
--	------------------------	-----------------------------	---

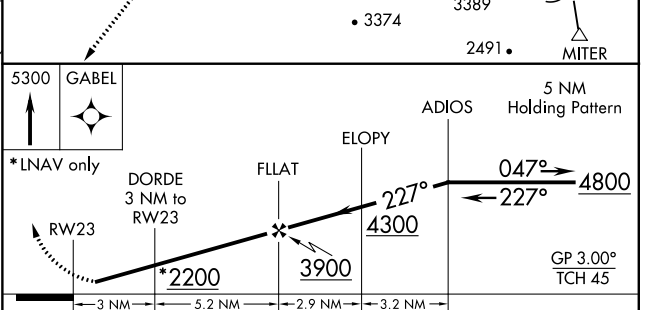
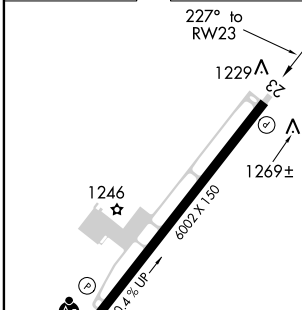
**Baro-VNAV NA when using Charlottesville altimeter setting.**  
 For uncompensated Baro-VNAV systems, LNAV/VNAV NA below -17°C (2°F) or above 47°C (116°F). DME/DME RNP-0.3 NA. Visibility reduction by helicopters NA. When local altimeter setting not received, use Charlottesville altimeter setting and increase all DA 130 feet, all MDA 140 feet. Increase LPV and LNAV/VNAV all Cats visibility ¼ mile, LNAV Cat C visibility ¼ mile and LNAV Cat D and MISSED APPROACH: Climb to 5300 direct GABEL and hold, continue climb-in-hold to 5300.

**23** -23°C/-9°F Circling Cat D visibility ½ mile.

AWOS-3 <b>124.925</b>	POTOMAC APP CON <b>132.85 323.125</b>	CLNC DEL <b>118.35</b>	UNICOM <b>123.0 (CTAF) 0</b>
--------------------------	--	---------------------------	---------------------------------



ELEV 1201	<b>D</b>	TDZE 1201
-----------	----------	-----------



CATEGORY	A	B	C	D
LPV DA		1451-1	250 (300-1)	
LNAV/VNAV DA		1530-1¼	329 (400-1¼)	
LNAV MDA		1520-1	319 (400-1)	
CIRCLING	1600-1	1660-1	1660-1½	1820-2
	399 (400-1)	459 (500-1)	459 (500-1½)	619 (700-2)

NE-3, 04 JAN 2018 to 01 FEB 2018

NE-3, 04 JAN 2018 to 01 FEB 2018