


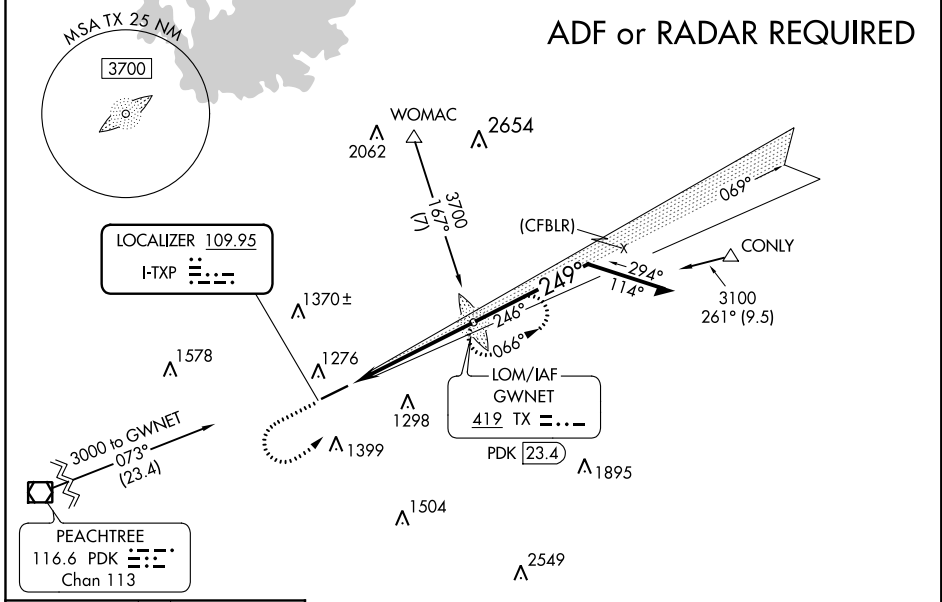
LOC I-TXP <b>109.95</b>	APP CRS <b>249°</b>	Rwy Idg TDZE Apt Elev	<b>6000</b> <b>1038</b> <b>1062</b>
----------------------------	------------------------	-----------------------------	---

**ILS or LOC RWY 25**  
GWINNETT COUNTY-BRISCOE FIELD (LZU)

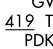

**NA** When local altimeter setting not received, use Winder altimeter setting and increase all DA 51 feet, and all MDA 60 feet, increase S-LOC 25 Cat C/D and Circling Cat C/D visibility 1/2 SM. ADF required. For inop MALSR, when using Winder altimeter setting increase S-ILS 25 all Cats visibility to 3/4 SM.

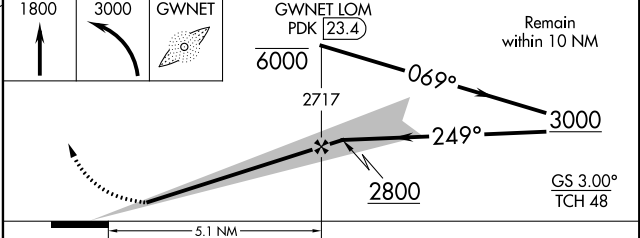
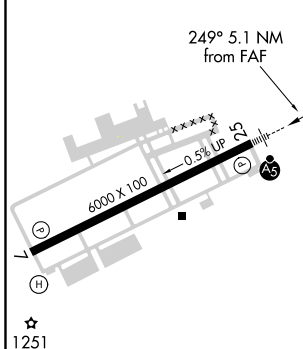
**MALSR**  
  
**MISSED APPROACH:** Climb to 1800 then climbing left turn to 3000 direct GWINNET LOM and hold.

ATIS <b>132.275</b>	ATLANTA APP CON <b>126.975 239.275</b>	<b>GWINNETT TOWER *</b> <b>124.1 (CTAF) 1</b>	GND CON <b>121.8</b>	CLNC DEL <b>121.8</b>	ATLANTA CLNC DEL <b>134.0</b> (When tower closed)	UNICOM <b>123.05</b>
------------------------	---	--	-------------------------	--------------------------	---	-------------------------



ELEV 1062	TDZE 1038
-----------	-----------

**ALTERNATIVE MISSED APCH FIX**  
GWINNET  
419 TX  PDK 23.4  




CATEGORY	A	B	C	D
S-ILS 25		1238-1/2	200 (200-1/2)	
S-LOC 25	1540-1/2	502 (500-1/2)	1540-1	502 (500-1)
CIRCLING	1640-1	578 (600-1)	1640-1 1/2	1700-2 638 (700-2)

SE-4, 04 JAN 2018 to 01 FEB 2018

SE-4, 04 JAN 2018 to 01 FEB 2018