

APP CRS <b>263°</b>	Rwy Idg <b>3780</b>
	TDZE <b>632</b>
	Apt Elev <b>634</b>

# RNAV (GPS) RWY 26

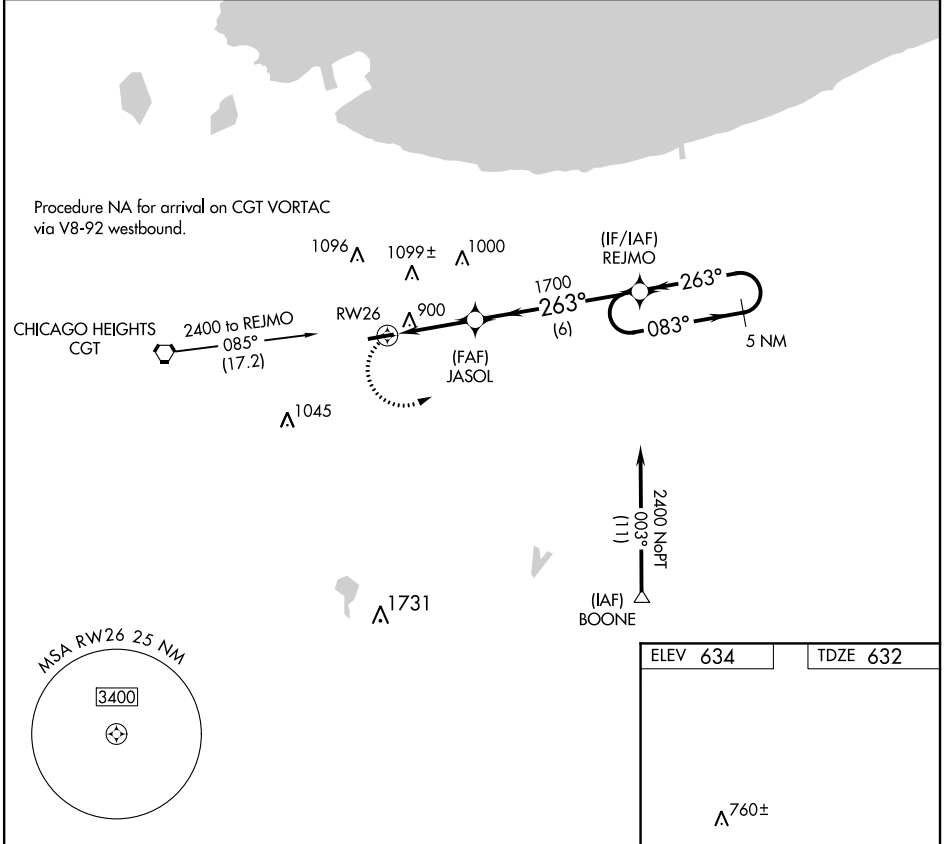
GRIFFITH-MERRILLVILLE (Ø5C)

**▽** DME/DME RNP -0.3 NA. Obtain local altimeter setting on CTAF; when not recieved use Chicago Midway Inl altimeter setting and increase all MDAs 60 feet. Visibility reduction by helicopters NA.

**▲** NA

MISSED APPROACH: Climbing left turn to 2400 direct REJMO and hold.

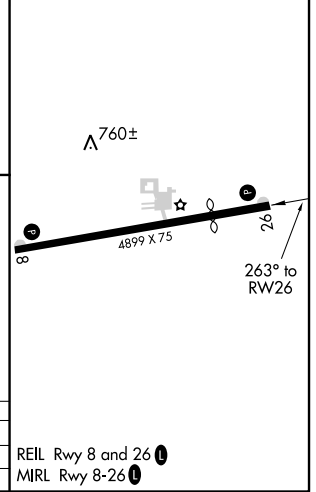
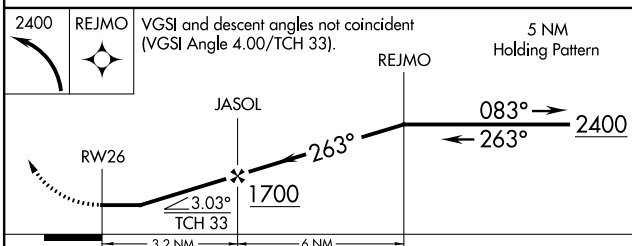
CHICAGO APP CON <b>133.1 285.6</b>	UNICOM <b>123.0 (CTAF) 0</b>
---------------------------------------	---------------------------------



EC-2, 04 JAN 2018 to 01 FEB 2018

EC-2, 04 JAN 2018 to 01 FEB 2018

ELEV 634	TDZE 632
----------	----------



CATEGORY	A	B	C	D
LNAV MDA	1160-1	528 (600-1)		NA
CIRCLING	1200-1	566 (600-1)		NA