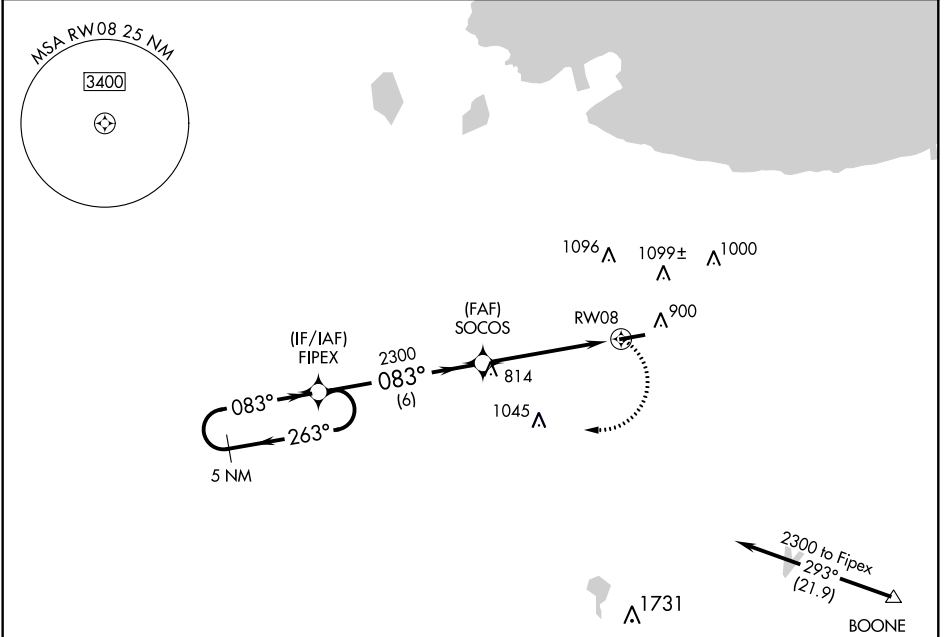


APP CRS 083°	Rwy Idg 4900 TDZE 634 Apt Elev 634
------------------------	---

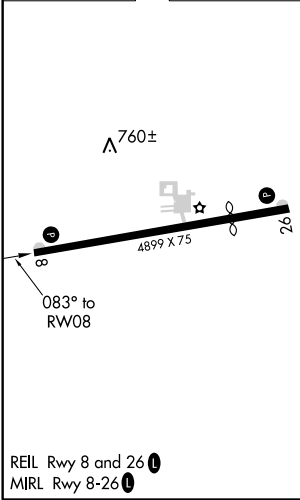
RNAV (GPS) RWY 8
GRIFFITH-MERRILLVILLE (Ø5C)

⚠ DME/DME RNP -0.3 NA. Obtain local altimeter setting on CTAF; when not received use Chicago Midway Intl altimeter setting and increase all MDAs 60 feet. Visibility reduction by helicopters NA.
⚠ NA MISSED APPROACH: Climbing right turn to 2300 direct FIPEX and hold.

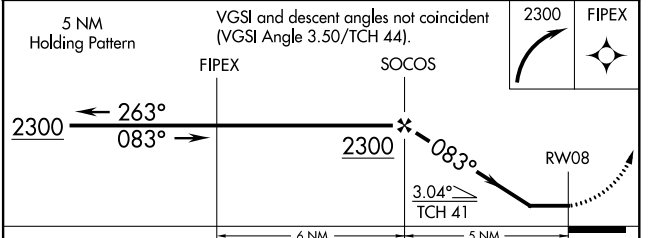
CHICAGO APP CON 133.1 285.6	UNICOM 123.0 (CTAF) 0
---------------------------------------	---------------------------------



ELEV 634	TDZE 634
----------	----------



Procedure NA for arrivals at BOONE via V422 southeastbound.



CATEGORY	A	B	C	D
LNNAV MDA	1080-1	446 (500-1)	NA	
CIRCLING	1200-1	566 (600-1)	NA	

EC-2, 04 JAN 2018 to 01 FEB 2018

EC-2, 04 JAN 2018 to 01 FEB 2018