

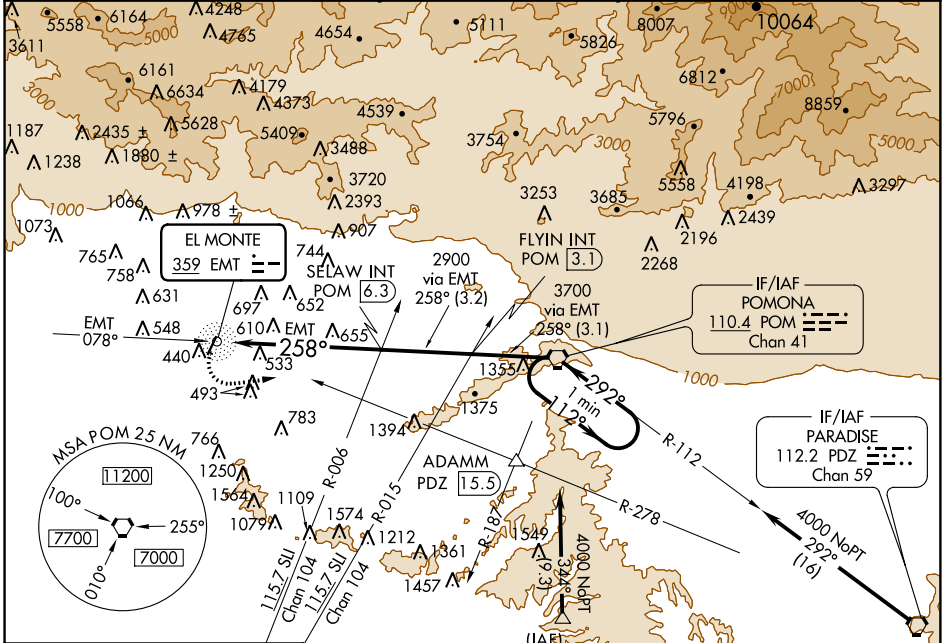
NDB EMT 359	APP CRS 258°	Rwy ldg TDZE Apt Elev	N/A N/A 296
-----------------------	------------------------	--------------------------	--------------------------

NDB or GPS-C
SAN GABRIEL VALLEY (EMT)

⚠ When local altimeter setting not received, use Ontario Intl altimeter setting and increase all MDA's 140 feet and Cat B visibility 1/4 mile. Helicopter visibility reduction below 1 SM NA. Circling Rwy 1 NA at night.

MISSED APPROACH: Climbing left turn to 2500 on heading 070° and on PDZ VORTAC R-278 to ADAMM Int/PDZ 15.5 DME then continue climb to 4000 to PDZ VORTAC.

ATIS 118.75	SOCAL APP CON 125.5 318.2	EL MONTE TOWER★ 121.2 (CTAF) 0	GND CON 125.9	UNICOM 122.95
-----------------------	-------------------------------------	------------------------------------------	-------------------------	-------------------------



SW-3, 04 JAN 2018 to 01 FEB 2018

SW-3, 04 JAN 2018 to 01 FEB 2018

