

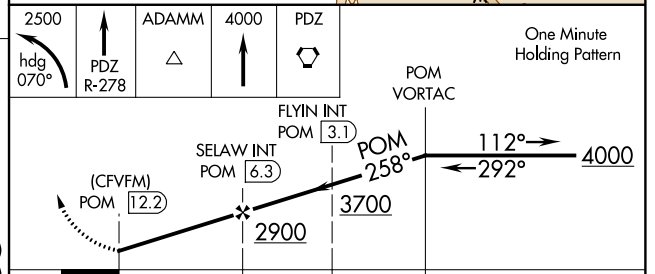
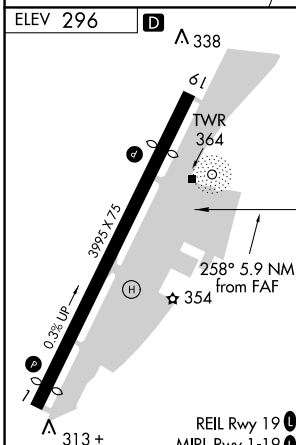
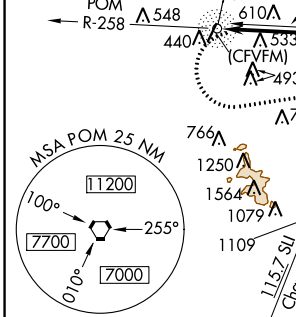
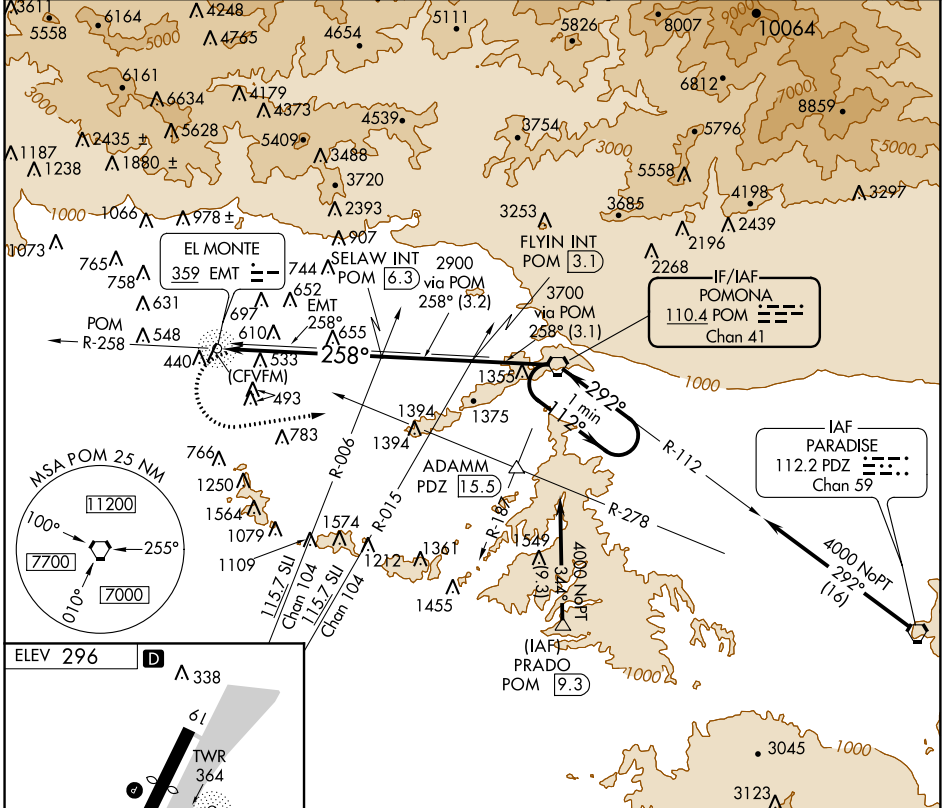
VORTAC POM <b>110.4</b> Chan <b>41</b>	APP CRS <b>258°</b>	Rwy Idg TDZE Apt Elev <b>N/A</b> <b>N/A</b> <b>296</b>
--	------------------------	---

**VOR or GPS-A**  
SAN GABRIEL VALLEY (EMT)

**⚠** When local altimeter setting not received, use Ontario Intl altimeter setting and increase all MDA's 140 feet. Helicopter visibility reduction below 1 SM NA. Circling Rwy 1 NA at night.

**MISSED APPROACH:** Climbing left turn to 2500 on heading 070° and PDZ VORTAC R-278 to ADAMM Int/PDZ 15.5 DME then continue climb to 4000 to PDZ VORTAC.

ATIS <b>118.75</b>	SOCAL APP CON <b>125.5 318.2</b>	EL MONTE TOWER * <b>121.2 (CTAF) 0</b>	GND CON <b>125.9</b>	UNICOM <b>122.95</b>
-----------------------	-------------------------------------	---	-------------------------	-------------------------



FAF to MAP 5.9 NM					CATEGORY	A	B	C	D
Knots	60	90	120	150	180	CIRCLING	1260-1¼ 964 (1000-1¼)	1260-1½ 964 (1000-1½)	NA
Min:Sec	5:54	3:56	2:57	2:22	1:58				

SW-3, 04 JAN 2018 to 01 FEB 2018

SW-3, 04 JAN 2018 to 01 FEB 2018