

WAAS CH 81824 W01A	APP CRS 011°	Rwy Idg TDZE 253 Apt Elev 265	6008
----------------------------------------	------------------------	---------------------------------------------------	-------------

RNAV (GPS) RWY 1

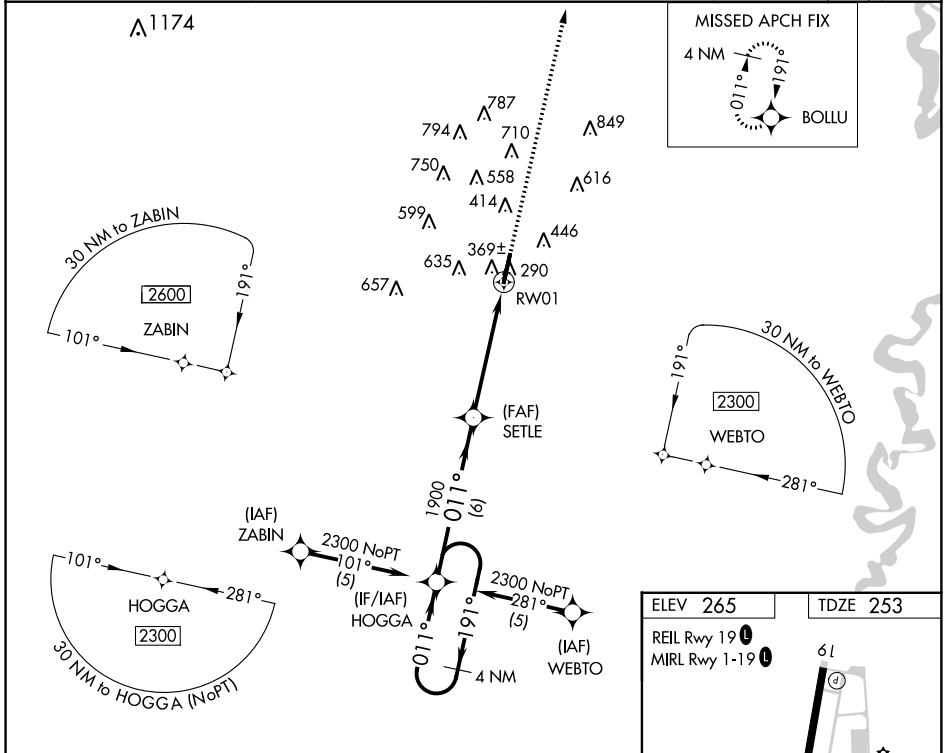
SEARCY MUNI (SRC)

▼ Circling NA for Cat C west of Rwy 1-19. DME/DME RNP-0.3 NA. VDP NA with Little Rock Bill and Hillary Clinton National/Adams Field altimeter setting. When local altimeter setting not received, use Little Rock Bill and Hillary Clinton National/Adams Field altimeter setting and increase all DA 87 feet and all MDA 100 feet, increase LPV all Cats and LNAV Cat C visibility ¼ mile. For inoperative MALSRL, increase LPV all Cats visibility to 1 ¼ mile. For inoperative MALSRL, when using Little Rock Bill and Hillary Clinton National/Adams Field altimeter setting, increase LPV all Cats visibility to 1 ½ mile.

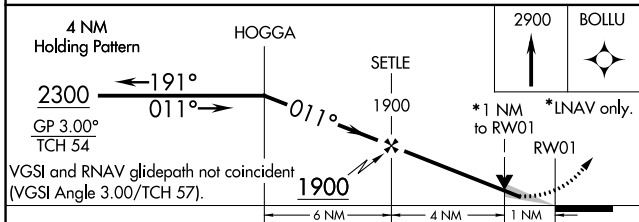
MALSRL
AS

MISSED APPROACH:
Climb to 2900 direct BOLLU and hold.

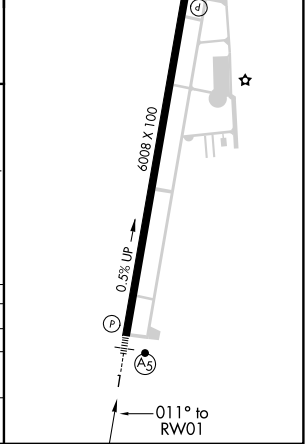
AWOS-3PT 128.325	LITTLE ROCK APP CON 119.75 291.775	CLNC DEL 119.75	UNICOM 122.7 (CTAF) Ⓛ
----------------------------	----------------------------------------------	---------------------------	----------------------------------------



ELEV 265	TDZE 253
REIL Rwy 19 Ⓛ	MIRL Rwy 1-19 Ⓛ



CATEGORY	A	B	C	D
LPV DA	573-¾	320 (400-¾)		NA
LNAV MDA	620-½	367 (400-½)		NA
CIRCLING	760-1	495 (500-1)	760-1½ 495 (500-1½)	NA



SC-1, 04 JAN 2018 to 01 FEB 2018

SC-1, 04 JAN 2018 to 01 FEB 2018