

WAAS CH 70527 W18A	APP CRS 182°	Rwy Idg TDZE Apt Elev	4000 698 698
--	------------------------	-----------------------------	---

RNAV (GPS) RWY 18

JASPER COUNTY (R.Z.L.)

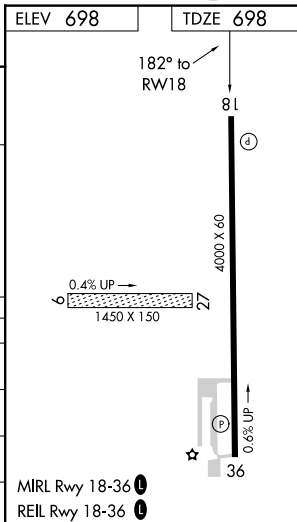
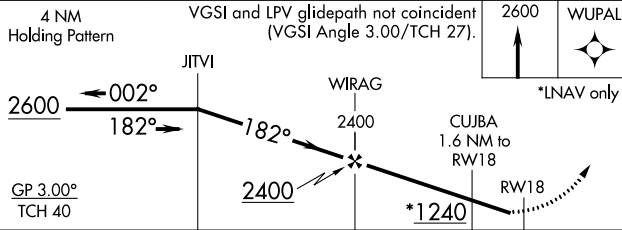
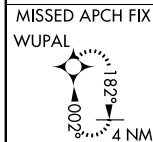
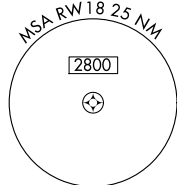
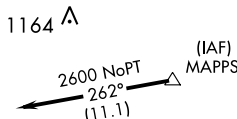
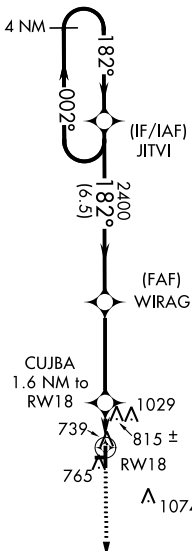
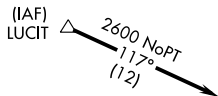
⚠ Baro-VNAV NA when using Knox altimeter setting. For uncompensated Baro-VNAV systems, LNAV/VNAV NA below -22°C (-7°F) or above 54°C (130°F). DME/DME RNP-0.3 NA.
⚠ When local altimeter setting not received, use Knox altimeter setting and increase all DA 78 feet and all MDA 80 feet. Increase LPV all Cats visibility 1/8 mile, LNAV-VNAV all Cats and LNAV and Circling Cat C visibility 1/4 mile. Procedure NA at night. Helicopter visibility reduction below 1 SM NA. Circling NA to Rws 9 and 27.

MISSED APPROACH:
Climb to 2600 direct WUPAL and hold.

AWOS-3P
119.175

CHICAGO CENTER
132.95 272.7

UNICOM
122.8 (CTAF) 0



CATEGORY	A	B	C	D
LPV DA	948-1 250 (300-1)			NA
LNAV/VNAV DA	1096-1 3/8 398 (400-1 3/8)			NA
LNAV MDA	1080-1	382 (400-1)	1080-1 1/8 382 (400-1 1/8)	NA
CIRCLING	1120-1 422 (500-1)	1340-1 642 (700-1)	1340-1 3/4 642 (700-1 3/4)	NA

MIRL Rwy 18-36 0
REIL Rwy 18-36 0

EC-2, 04 JAN 2018 to 01 FEB 2018

EC-2, 04 JAN 2018 to 01 FEB 2018