

| | | | |
|--|------------------------|-----------------------------|---|
| WAAS CH 82327 W36A | APP CRS 002° | Rwy Idg TDZE Apt Elev | 4000 681 698 |
|--|------------------------|-----------------------------|---|

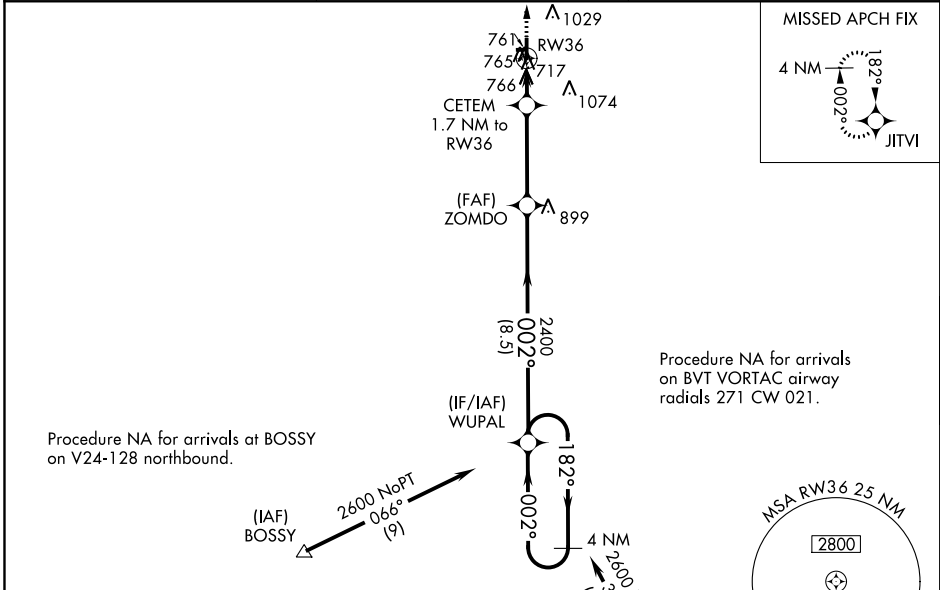
RNAV (GPS) RWY 36

JASPER COUNTY (R.Z.L.)

⚠ Baro-VNAV NA when using Knox altimeter setting. For uncompensated Baro-VNAV systems, LNAV/VNAV NA below -22°C (-7°F) or above 54°C (130°F). DME/DME RNP-0.3 NA. When local altimeter setting not received use Knox altimeter setting and increase all DA 78 feet and all MDA 80 feet, increase LPV and LNAV/VNAV all Cts visibility 1/8 mile and LNAV and Circling Cat C visibility 1/4 mile. Procedure NA at night. Helicopter visibility reduction below 1 SM NA. Circling NA to Rwys 9 and 27.

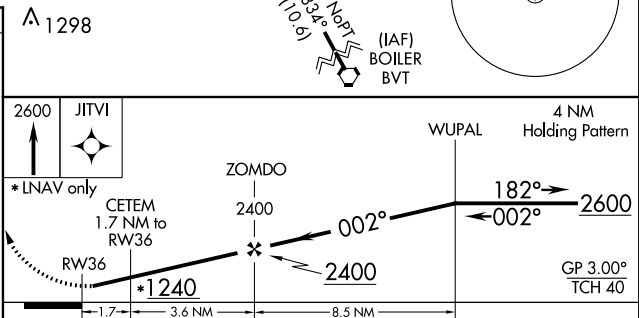
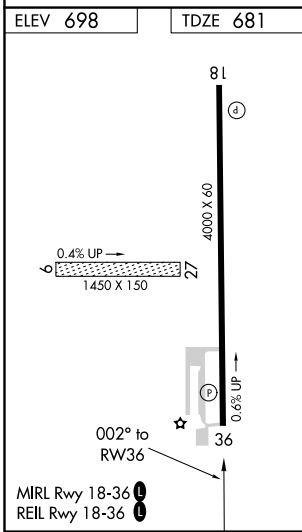
MISSED APPROACH:
Climb to 2600 direct JITVI and hold.

| | | |
|---------------------------|---------------------------------------|---------------------------------|
| AWOS-3P 119.175 | CHICAGO CENTER 132.95 272.7 | UNICOM 122.8 (CTAF) 0 |
|---------------------------|---------------------------------------|---------------------------------|



Procedure NA for arrivals at BOSSY on V24-128 northbound.

Procedure NA for arrivals on BVT VORTAC airway radials 271 CW 021.



| CATEGORY | A | B | C | D |
|---------------|--------------------|--------------------|----------------------------|----|
| LPV DA | | 931-1 250 (300-1) | | NA |
| LNAV/ VNAV DA | | 947-1 266 (300-1) | | NA |
| LNAV MDA | | 1020-1 339 (400-1) | | NA |
| CIRCLING | 1120-1 422 (500-1) | 1340-1 642 (700-1) | 1340-1 3/4 642 (700-1 3/4) | NA |

EC-2, 04 JAN 2018 to 01 FEB 2018

EC-2, 04 JAN 2018 to 01 FEB 2018