

HI-TACAN RWY 31

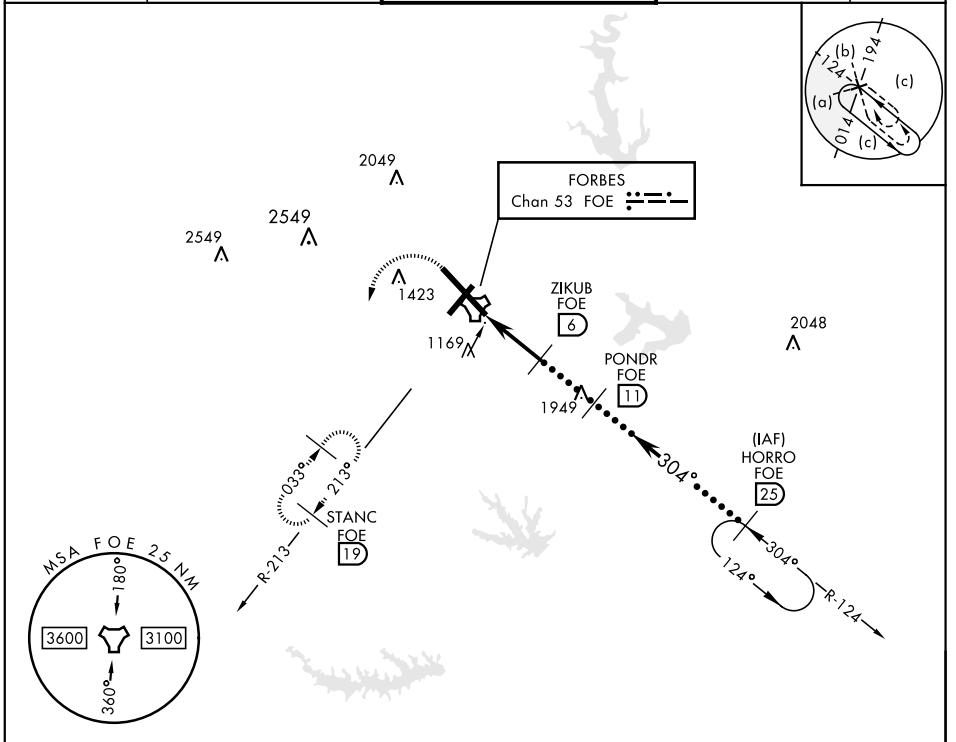
TACAN Chan 53	FOE	APCH CRS 304°	Rwy ldg TDZE 1037 Arpt Elev 1078
-------------------------	-----	-------------------------	--

JAL-424 [USAF]

TOPEKA RGNL (KFOE)

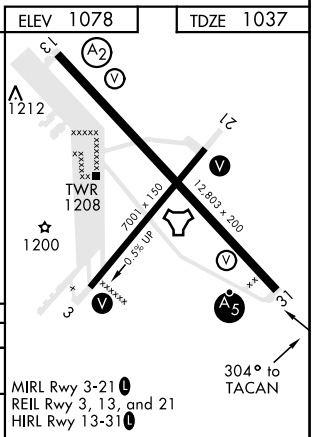
<p>▼ * For ALS inop, increase CAT CDE vis to 1 3/8.</p>	<p>MALSR A5</p>	<p>MISSED APPROACH: Climbing left turn to 3000 via heading 190° and FOE TACAN R-213 to STANC/19° DME and hold.</p>

<p>ATIS 128.25</p>	<p>KANSAS CITY CENTER 123.8 343.7</p>	<p>FORBES TOWER ★ 120.8 (CTAF) 340.2</p>	<p>GND CON 121.7 275.8</p>	<p>ASOS</p>
-------------------------------	--	---	---------------------------------------	-------------



EMERG SAFE ALT 100 NM 3600

<p>3000 FOE R-213</p> <p>STANC FOE (19)</p> <p>HORRO R-124 (25) FL 250 10,000</p> <p>PONDR (11)</p> <p>ZIKUB (6)</p> <p>TACAN</p> <p>BUMKE (2.1)</p> <p>2700</p> <p>3000</p> <p>2.90° TCH 58</p> <p>5.2 NM</p>												
<table border="1"> <thead> <tr> <th>CATEGORY</th> <th>C</th> <th>D</th> <th>E</th> </tr> </thead> <tbody> <tr> <td>S-31*</td> <td>1520/50</td> <td>483 (500-1)</td> <td></td> </tr> <tr> <td>CIRCLING</td> <td>1580-1 1/2 502 (600-1 1/2)</td> <td>1700-2 622 (700-2)</td> <td>1720-2 1/4 642 (700-2 1/4)</td> </tr> </tbody> </table>	CATEGORY	C	D	E	S-31*	1520/50	483 (500-1)		CIRCLING	1580-1 1/2 502 (600-1 1/2)	1700-2 622 (700-2)	1720-2 1/4 642 (700-2 1/4)
CATEGORY	C	D	E									
S-31*	1520/50	483 (500-1)										
CIRCLING	1580-1 1/2 502 (600-1 1/2)	1700-2 622 (700-2)	1720-2 1/4 642 (700-2 1/4)									



HI-TACAN RWY 31

NC-2. 01 FEB 2018 to 01 MAR 2018

NC-2. 01 FEB 2018 to 01 MAR 2018