

LOC/DME I-FOE <b>110.1</b> Chan 38	APP CRS <b>312°</b>	Rwy Idg <b>12803</b> TDZE <b>1037</b> Apt Elev <b>1078</b>
--	------------------------	--

# ILS or LOC RWY 31

TOPEKA RGNL (F/OE)

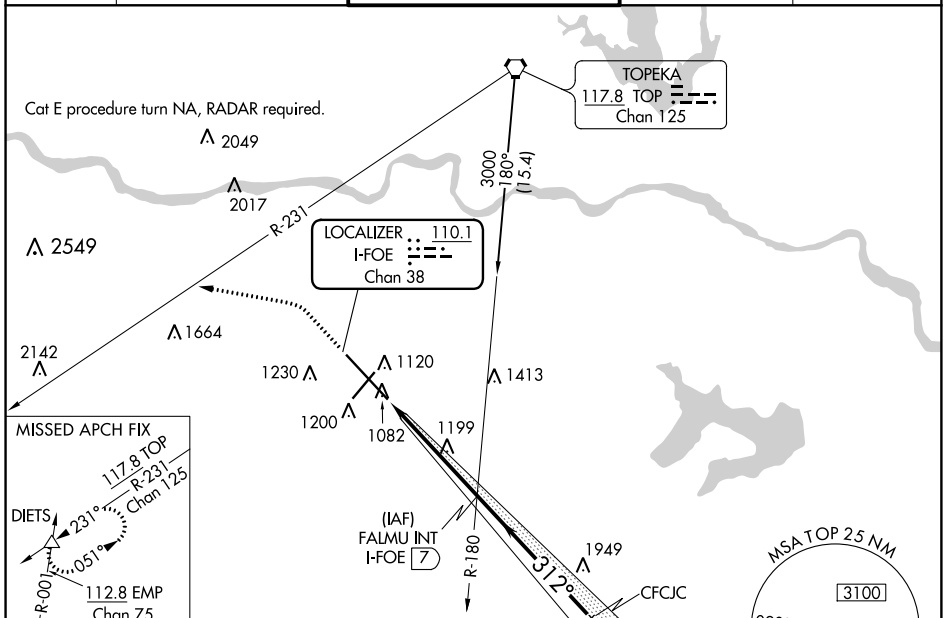
**⚠** For inop ALS, increase S-ILS Cat E visibility to RVR 4000 and S-LOC Cat E visibility to 1¼ SM.  
\*S-ILS visibility Cat A/B/C/D, RVR 1800 authorized with the use of FD or AP or HUD to DA, NA with Philip Billard Muni altimeter setting.

MALSR



**MISSED APPROACH:** Climb to 1900 then climbing left turn to 3700 on heading 275° and on TOP VORTAC R-231 to DIETS INT and hold.

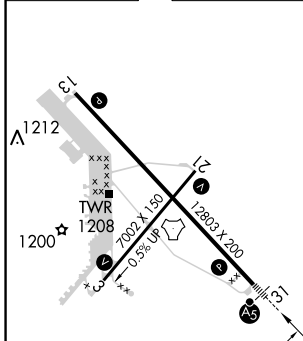
ATIS <b>128.25</b>	KANSAS CITY CENTER <b>123.8 343.7</b>	FORBES TOWER* <b>120.8 (CTAF) 340.2</b>	GND CON <b>121.7 275.8</b>	UNICOM <b>122.95</b>
-----------------------	--	--	-------------------------------	-------------------------



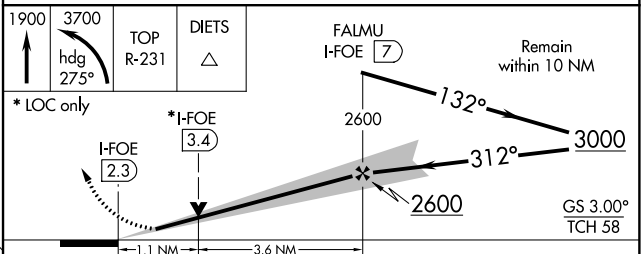
NC-2: 01 FEB 2018 to 01 MAR 2018

NC-2: 01 FEB 2018 to 01 MAR 2018

ELEV 1078	<b>D</b>	TDZE 1037
-----------	----------	-----------



REIL Rwy 3, 13 and 21	312° 4.7 NM from FAF
MIRL Rwy 3-21	
HIRL Rwy 13-31	
FAF to MAP 4.7 NM	
Knots	60 90 120 150 180
Min:Sec	4:42 3:08 2:21 1:53 1:34



CATEGORY	A	B	C	D	E
S-ILS 31	1237/24 200 (200-½)				
S-LOC 31	1460/24	423 (400-½)	1460/40	423 (400-¾)	
<b>C</b> CIRCLING	1520-1 442 (500-1)	1580-1 502 (600-1)	1580-1½ 502 (600-1½)	1700-2 622 (700-2)	1720-2¼ 642 (700-2¼)