

WAAS CH <b>42834</b> W21A	APP CRS <b>215°</b>	Rwy Idg TDZE Apt Elev	<b>7001</b> <b>1047</b> <b>1078</b>
---------------------------------	------------------------	-----------------------------	---

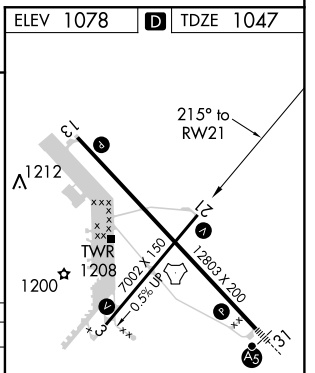
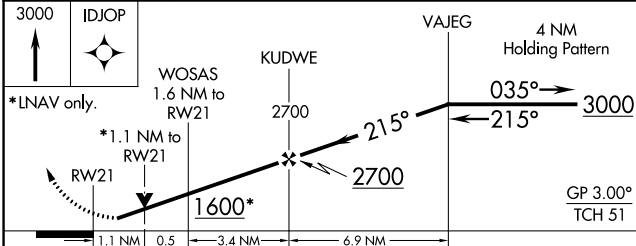
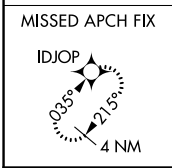
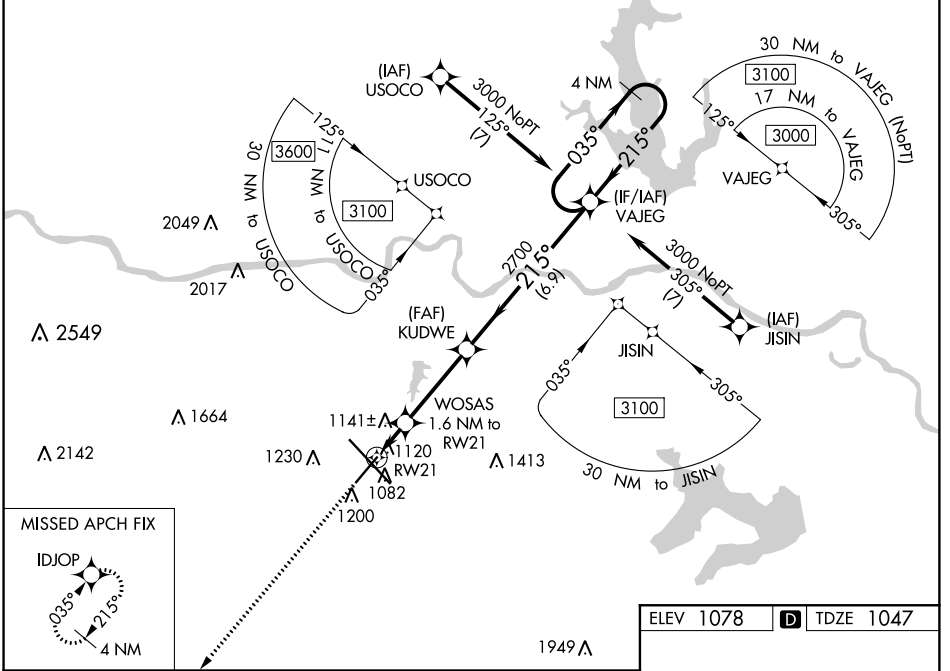
# RNAV (GPS) RWY 21

TOPEKA RGNL (F/OE)

**⚠** For uncompensated Baro-VNAV systems, LNAV/VNAV NA below -19°C (-2°F) or above 54°C (130°F).  
**⚠** When local altimeter setting not received, use Philip Billard Muni altimeter setting and increase all DA 45 feet and all MDA 60 feet, increase LPV and LNAV/VNAV all Cats visibility to 1 mile and increase LNAV Cat C/D visibility and Circling Cat D visibility ½ mile. DME/DME RNP-0.3 NA. VDP and Baro-VNAV NA when using Philip Billard Muni altimeter setting. Helicopter visibility reduction below ¾ SM NA.

**MISSED APPROACH:** Climb to 3000 direct IDJOP and hold.

ATIS <b>128.25</b>	KANSAS CITY CENTER <b>123.8 343.7</b>	FORBES TOWER* <b>120.8 (CTAF) 340.2</b>	GND CON <b>121.7 275.8</b>	UNICOM <b>122.95</b>
-----------------------	--	--	-------------------------------	-------------------------



CATEGORY	A	B	C	D
LPV DA		1311-1	264 (300-1)	
LNAV/VNAV DA		1297-¾	250 (300-¾)	
LNAV MDA	1440-1	393 (400-1)	1440-1½	393 (400-1½)
<b>C</b> CIRCLING	1520-1 442 (500-1)	1580-1 502 (600-1)	1580-1½ 502 (600-1½)	1700-2 622 (700-2)

REIL Rwy 3, 13 and 21  
 MIRL Rwy 3-21 **⓪**  
 HIRL Rwy 13-31 **⓪**

NC-2. 01 FEB 2018 to 01 MAR 2018

NC-2. 01 FEB 2018 to 01 MAR 2018