

WAAS CH 65631 W13A	APP CRS 132°	Rwy Idg 4498 TDZE 2130 Apt Elev 2131
--	------------------------	---

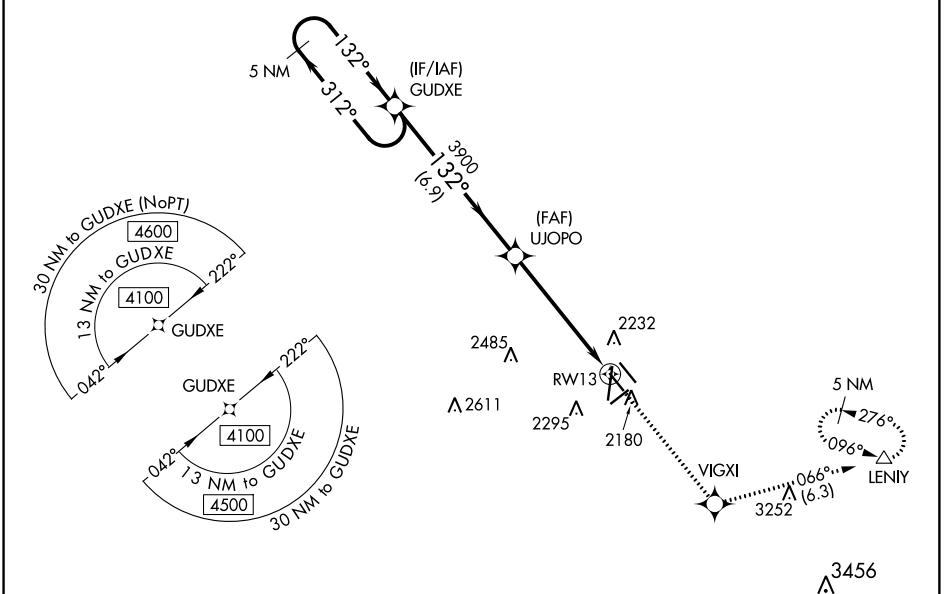
RNAV (GPS) RWY 13

KEARNEY RGNL (E.A.R.)

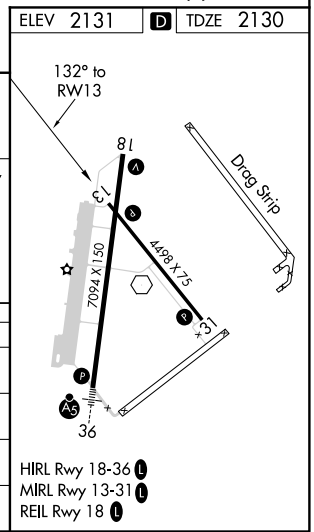
⚠ For uncompensated Baro-VNAV systems, LNAV/VNAV NA below -19°C (-2°F) or above 54°C (130°F). DME/DME RNP-0.3 NA. When local altimeter setting not received, use Holdrege altimeter setting and increase all DA 77 feet and all MDA 80 feet, increase LPV visibility all Cats 1/8 mile, increase LNAV/VNAV visibility all Cats 3/8 mile, and LNAV Circling Cat C visibility 1/8 mile.

MISSED APPROACH: Climb to 4300 direct VIGXI and on track 066° to LENIY and hold.

AWOS-3PT 123.875	MINNEAPOLIS CENTER 119.4 278.8	UNICOM 123.0 (CTAF) 0
----------------------------	--	---------------------------------



5 NM Holding Pattern GUDXE		4300 VIGXI	tr 066°	LENIY
4100 ← 312°				
GP 3.00° TCH 43				
→ 132°				
3900				
*1.7 NM to RWY13				
6.9 NM		3.7 NM	1.7 NM	
CATEGORY	A	B	C	D
LPV DA		2330-3/4	200 (200-3/4)	NA
LNAV/VNAV DA		2380-3/4	250 (300-3/4)	NA
LNAV MDA	2720-1	590 (600-1)	2720-1 3/4 590 (600-1 3/4)	NA
CIRCLING	2720-1	589 (600-1)	2720-1 3/4 589 (600-1 3/4)	NA



NC-2. 01 FEB 2018 to 01 MAR 2018

NC-2. 01 FEB 2018 to 01 MAR 2018