

WAAS CH <b>86213</b> <b>W18A</b>	APP CRS <b>178°</b>	Rwy Idg TDZE Apt Elev	<b>7094</b> <b>2131</b> <b>2131</b>
--	------------------------	-----------------------------	---

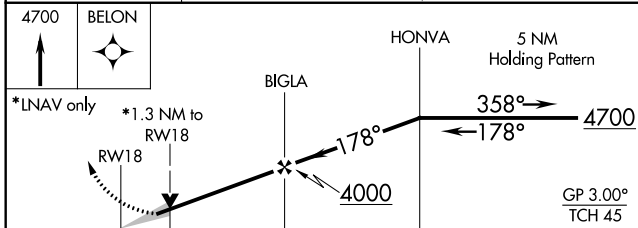
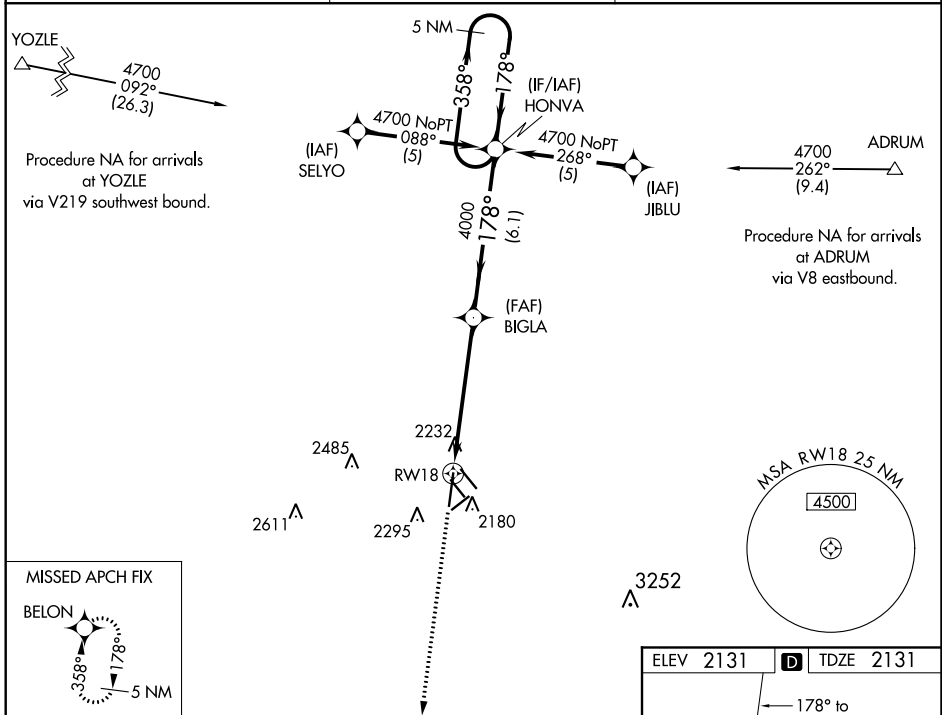
# RNAV (GPS) RWY 18

KEARNEY RGNL (E.A.R.)

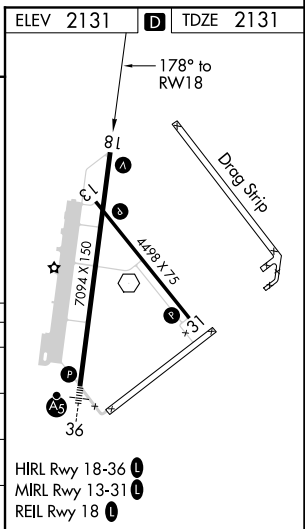
**⚠** Baro-VNAV NA below -19°C (-2°F). DME/DME RNP-0.3 NA. If local altimeter setting not received, use Brewster Field altimeter setting and increase all DAs/MDAs 80 feet. Baro-VNAV and VDP NA when using Brewster Field altimeter setting.

**⚠** MISSED APPROACH: Climb to 4700 direct BELON and hold.

AWOS-3PT <b>123.875</b>	MINNEAPOLIS CENTER <b>119.4 278.8</b>	UNICOM <b>123.0 (CTAF) ①</b>
----------------------------	--	---------------------------------



CATEGORY	A	B	C	D
LPV DA	2470-1¼		339 (400-1¼)	
RNAV/VNAV DA	2520-1½		389 (400-1½)	
RNAV MDA	2600-1	469 (500-1)	2600-1¼ 469 (500-1¼)	2600-1½ 469 (500-1½)
CIRCLING	2600-1½		2700-2 569 (600-2)	



HIRL Rwy 18-36 **L**  
MIRL Rwy 13-31 **L**  
REIL Rwy 18 **L**

NC-2. 01 FEB 2018 to 01 MAR 2018

NC-2. 01 FEB 2018 to 01 MAR 2018