


WAAS CH 90113 W36A	APP CRS 358°	Rwy Idg TDZE Apt Elev	7094 2131 2131
--	------------------------	-----------------------------	---


RNAV (GPS) RWY 36

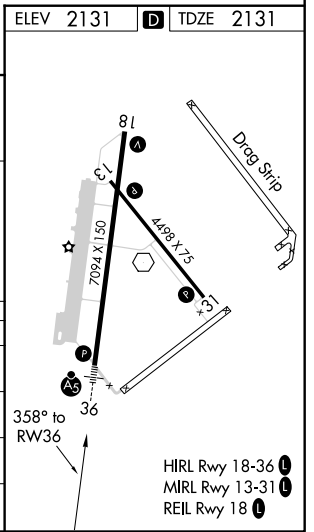
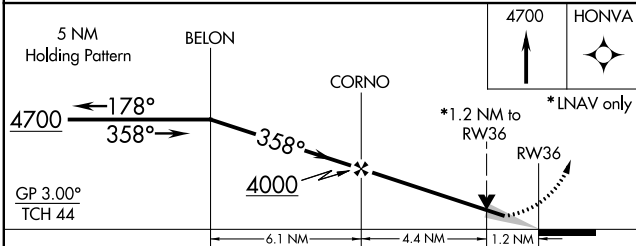
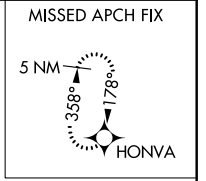
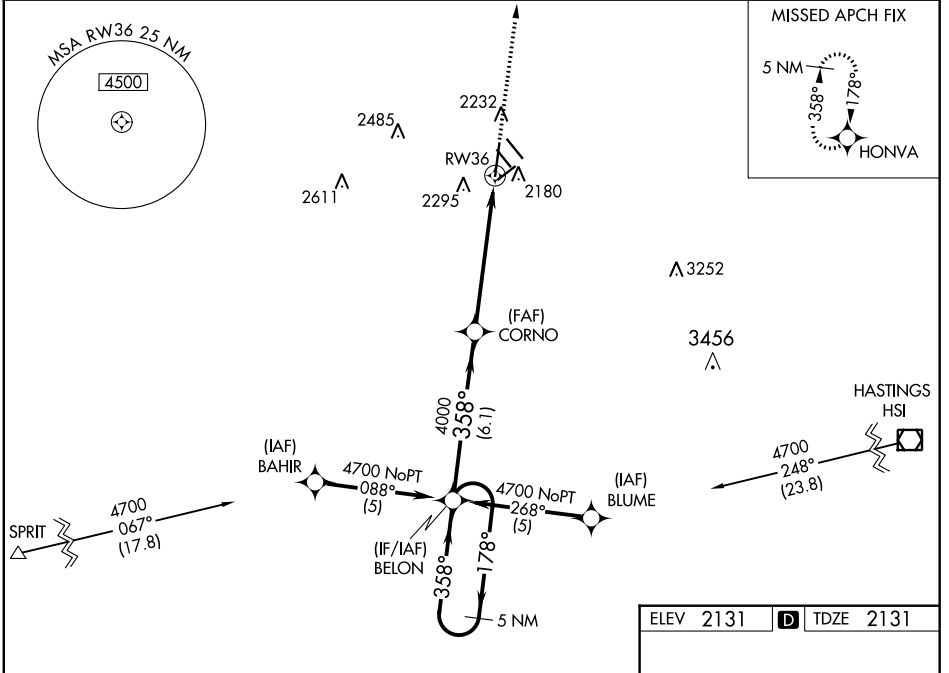
KEARNEY RGNL (E.A.R.)

⚠ Baro-VNAV NA below -19°C (-2°F). DME/DME RNP-0.3 NA. If local altimeter setting not received, use Brewster Field altimeter setting and increase all DAs/MDAs 80 feet. Baro VNAV and VDP NA when using Brewster Field altimeter setting. For inoperative MALSR, increase LPV visibility all Cats to 1 mile, increase LNAV Cat D visibility to 1¼ mile.

MALSR 

MISSED APPROACH: Climb to 4700 direct HONVA and hold.

AWOS-3PT 123.875	MINNEAPOLIS CENTER 119.4 278.8	UNICOM 123.0 (CTAF) 
----------------------------	--	---



CATEGORY	A	B	C	D
LPV DA	2390-½ 259 (300-½)			
LNAV/VNAV DA	2580-1 449 (500-1)			
LNAV MDA	2540-½ 409 (500-½)	2540-¾ 409 (500-¾)	2540-1 409 (500-1)	
CIRCLING	2600-1½ 469 (500-1½)	2700-2 569 (600-2)		

NC-2. 01 FEB 2018 to 01 MAR 2018

NC-2. 01 FEB 2018 to 01 MAR 2018