

**NDB-B**

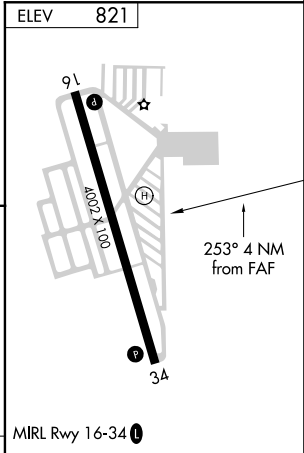
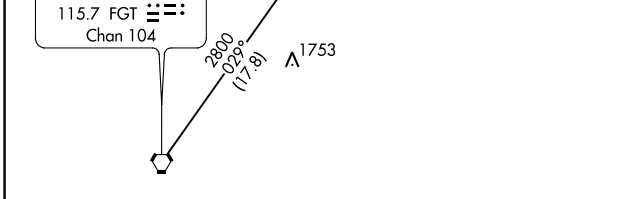
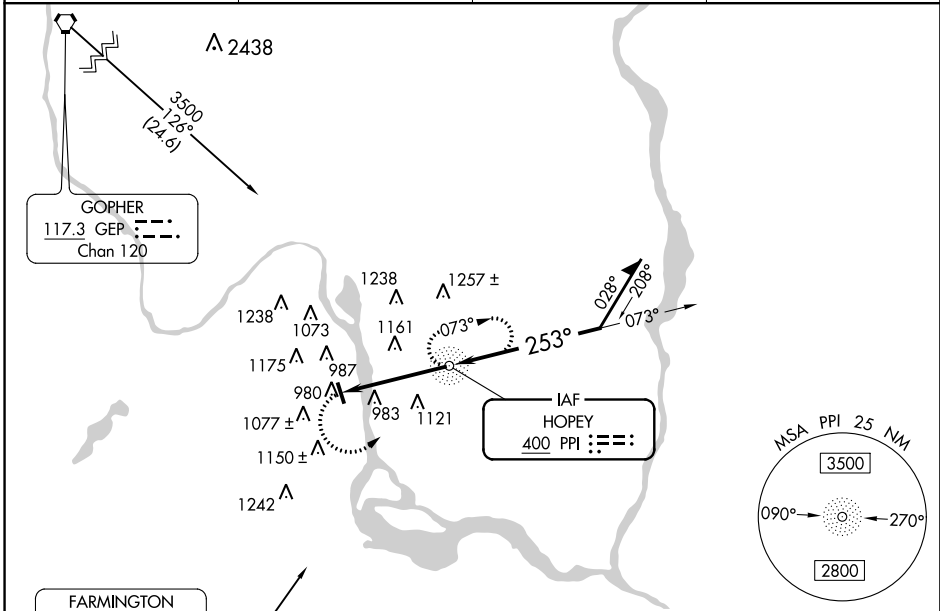
SOUTH ST PAUL MUNI-RICHARD E FLEMING FIELD (SGS)

NDB PPI <b>400</b>	APP CRS <b>253°</b>	Rwy Idg TDZE Apt Elev <b>N/A</b> <b>N/A</b> <b>821</b>
-----------------------	------------------------	--

**NA**  
When local altimeter setting not received, use Minneapolis Wold-Chamberlain Intl altimeter setting and increase all MDA 40 feet. Increase Cat C/D visibility ¼ mile.

**MISSED APPROACH:** Climbing left turn to 2700 direct PPI NDB and hold, continue climb-in-hold to 2700.

AWOS-3 <b>119.425</b>	MINNEAPOLIS APP CON <b>121.2 335.65</b>	CLNC DEL <b>118.2</b>	UNICOM <b>122.7 (CTAF)</b>
--------------------------	--	--------------------------	-------------------------------



2700 PPI	PPI NDB	Remain within 10 NM
2600	253°	073°
2700		
4 NM		

CATEGORY	A	B	C	D	FAF to MAP 4 NM					
<b>CIRCLING</b>	1520-1 699 (700-1)	1540-1 719 (800-1)	1540-2 719 (800-2)	1620-2½ 799 (800-2½)	Knots	60	90	120	150	180
					Min:Sec	4:00	2:40	2:00	1:36	1:20

**NDB-B**

NC-1, 01 FEB 2018 to 01 MAR 2018

NC-1, 01 FEB 2018 to 01 MAR 2018