

WAAS CH 78314 W13A	APP CRS 131°	Rwy Idg 6401 TDZE 1470 Apt Elev 1470
--	------------------------	---

RNAV (GPS) RWY 13

DEVILS LAKE RGNL (DVL)

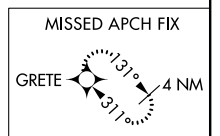
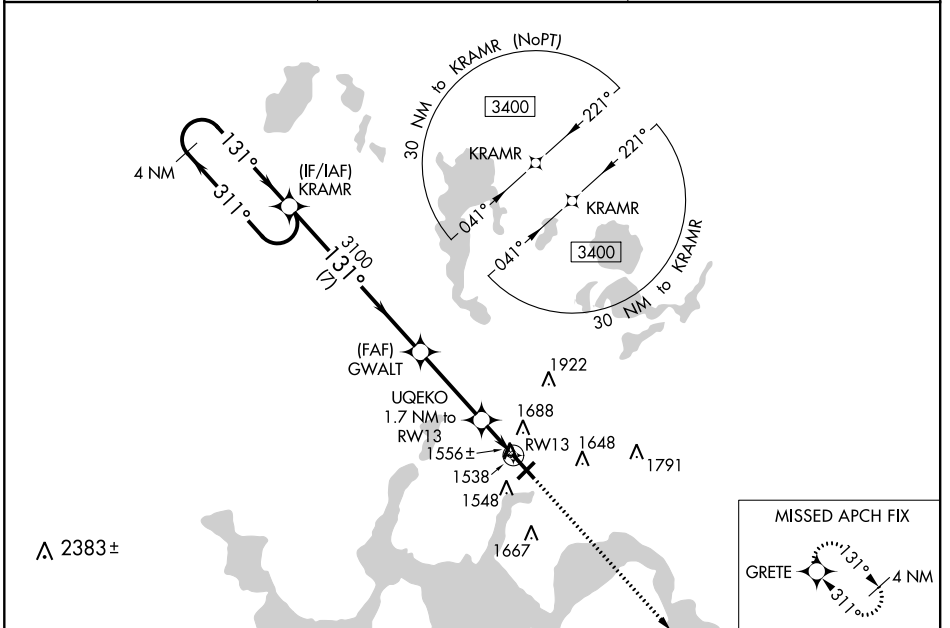
⚠ For uncompensated Baro-VNAV systems, LNAV/VNAV NA below -17°C (2°F) or above 54°C (130°F). DME/DME RNP-0.3 NA. Baro-VNAV and VDP NA when using Cando altimeter setting. When local altimeter setting not received, use Cando altimeter setting and increase all DA 63 feet and all MDA 80 feet, increase LPV and LNAV/VNAV all Cats visibility ¼ mile, LNAV and Circling Cats C and D visibility ½ mile.

MISSED APPROACH: Climb to 3400 direct GRETE and hold.

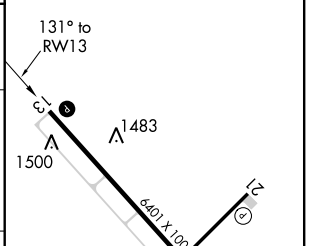
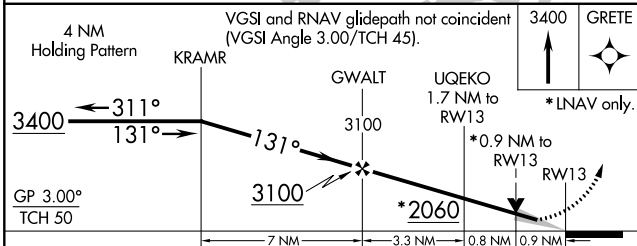
AWOS-3PT
125.875

GRAND FORKS RADIO
122.3

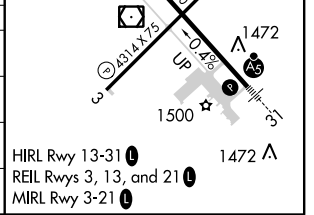
UNICOM
122.8 (CTAF) ①



ELEV 1470 **D** TDZE 1470



CATEGORY	A	B	C	D
LPV DA		1720-¾	250 (300-¾)	
LNAV/VNAV DA		1791-1	321 (400-1)	
LNAV MDA		1820-1	350 (400-1)	
C CIRCLING	2000-1	530 (600-1)	2240-2¼ 770 (800-2¼)	2240-2½ 770 (800-2½)



NC-1, 01 FEB 2018 to 01 MAR 2018

NC-1, 01 FEB 2018 to 01 MAR 2018