


WAAS CH 58314 W31A	APP CRS 311°	Rwy ldg 6401 TDZE 1450 Apt Elev 1470
--	------------------------	---

RNAV (GPS) RWY 31

DEVILS LAKE RGNL (DVL)

⚠ For uncompensated Baro-VNAV systems, LNAV/VNAV NA below -17°C (2°F) or above 54°C (130°F). DME/DME RNP-0.3 NA. Baro-VNAV and VDP NA when using Cando altimeter setting. For inop MALS, increase LNAV/VNAV all Cats visibility to ½, LNAV Cats C and D visibility to 1 mile. When local altimeter setting not received, use Cando altimeter setting and increase all DA 63 feet, and all MDA 80 feet, increase LNAV/VNAV all Cats visibility ½ mile, LNAV and Circling Cats C and D visibility ¼ mile. For inop MALS when using Cando altimeter setting, increase LPV all Cats visibility to ¾ mile.

MALS

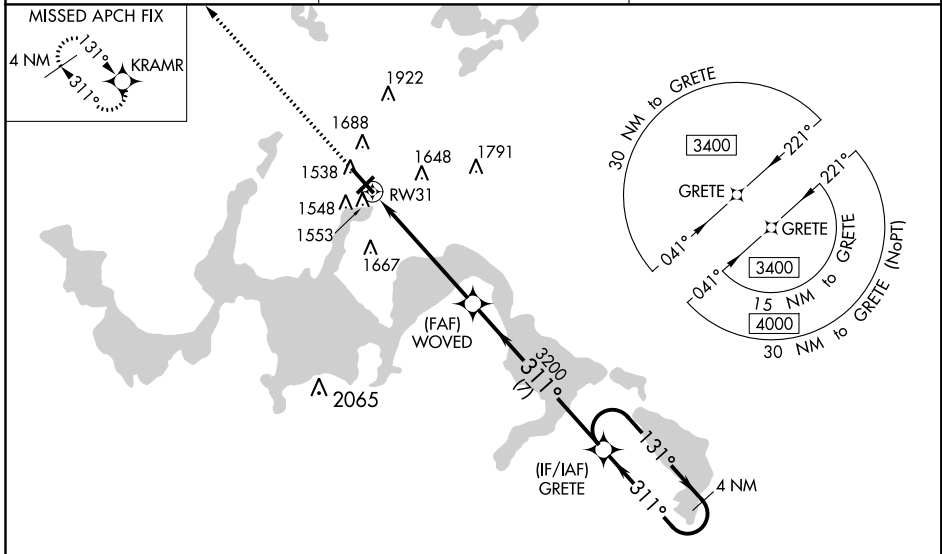


MISSED APPROACH:
Climb to 3400 direct KRAMR and hold.

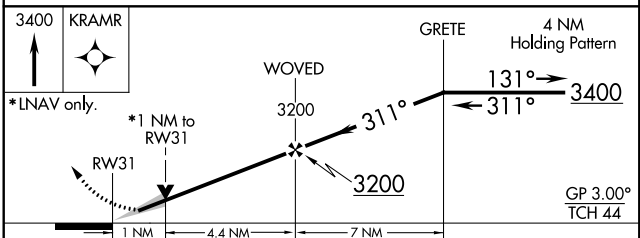
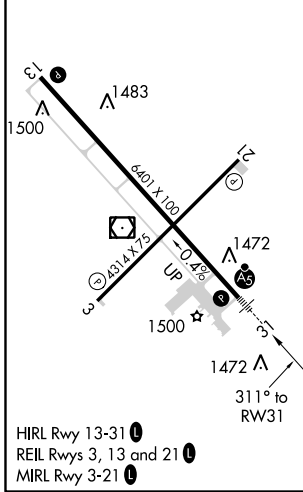
AWOS-3PT
125.875

GRAND FORKS RADIO
122.3

UNICOM
122.8 (CTAF) 0



ELEV 1470 **D** TDZE 1450



CATEGORY	A	B	C	D
LPV DA		1650-½	200 (200-½)	
LNAV/VNAV DA		1721-½	271 (300-½)	
LNAV MDA	1820-½	370 (400-½)	1820-⅝	370 (400-⅝)
C CIRCLING	2000-1	530 (600-1)	2240-2¼ 770 (800-2¼)	2240-2½ 770 (800-2½)

NC-1, 01 FEB 2018 to 01 MAR 2018

NC-1, 01 FEB 2018 to 01 MAR 2018