

VOR/DME DVL <b>111.0</b> Chan 47	APP CRS <b>030°</b>	Rwy Idg TDZE Apt Elev	<b>4314</b> <b>1450</b> <b>1470</b>
--	------------------------	-----------------------------	---

# VOR RWY 3

DEVILS LAKE RGNL (DVL)

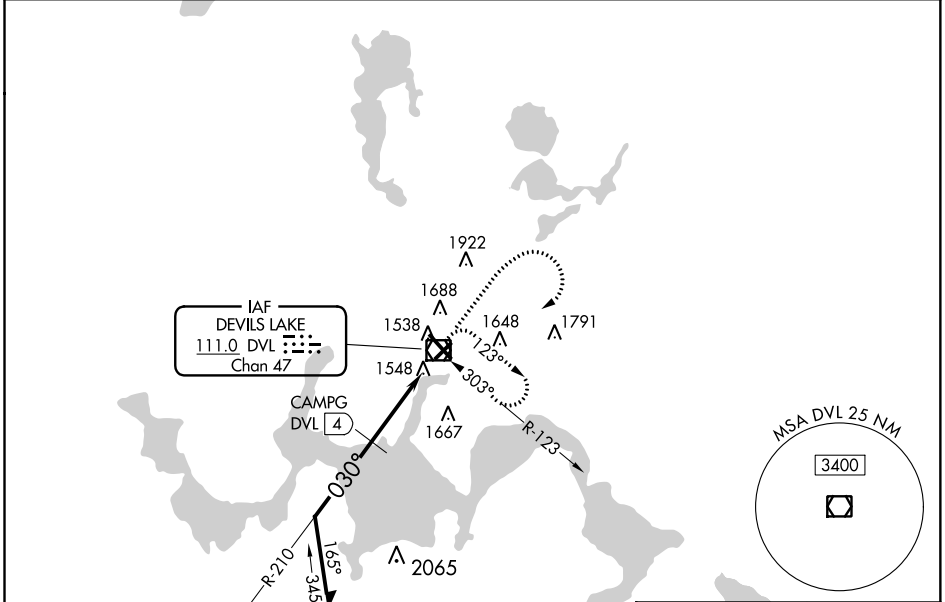
**⚠** When local altimeter setting not received, use Cando altimeter setting and increase all MDA 80 feet, increase S-3 Cat A and Circling Cat C visibility ¼ mile, increase CAMPG FIX MINIMUMS S-3 Cats C/D visibility ⅜ mile and Circling Cats C/D ¼ mile. Helicopter visibility reduction below 1 SM NA.

**MISSED APPROACH:** Climb to 3000 then climbing right turn to 3500 direct DVL VOR/DME and hold.

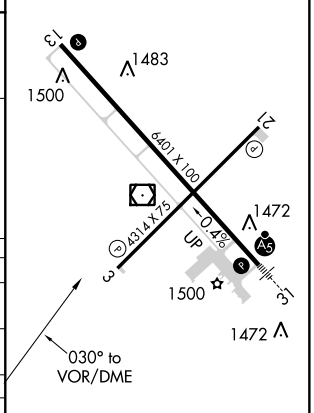
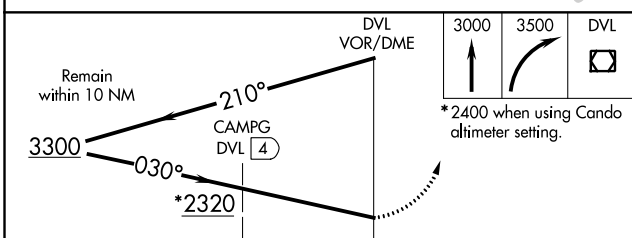
AWOS-3PT  
**125.875**

GRAND FORKS RADIO  
**122.3**

UNICOM  
**122.8 (CTAF) 0**



ELEV 1470 **D** TDZE 1450



CATEGORY	A	B	C	D
S-3	2320-1 870 (900-1)	2320-1¼ 870 (900-1¼)	2320-2½ 870 (900-2½)	
<b>C</b> CIRCLING	2320-1¼	850 (900-1¼)	2320-2½ 850 (900-2½)	2320-2¾ 850 (900-2¾)
CAMPG FIX MINIMUMS				
S-3	1820-1 370 (400-1)			
<b>C</b> CIRCLING	2000-1	530 (600-1)	2240-2¼ 770 (800-2¼)	2240-2½ 770 (800-2½)

HIRL Rwy 13-31 **0**  
REIL Rwys 3, 13, and 21 **0**  
MIRL Rwy 3-21 **0**

NC-1, 01 FEB 2018 to 01 MAR 2018

NC-1, 01 FEB 2018 to 01 MAR 2018