

APP CRS <b>083°</b>	Rwy Idg <b>4900</b>
	TDZE <b>634</b>
	Apt Elev <b>634</b>

# RNAV (GPS) RWY 8

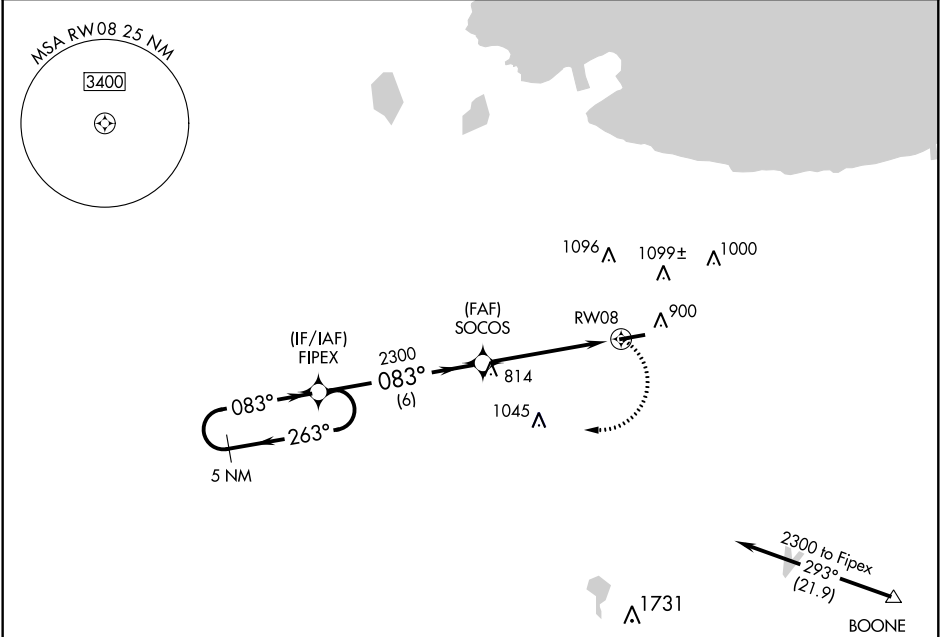
GRIFFITH-MERRILLVILLE (Ø5C)

**⚠** DME/DME RNP -0.3 NA. Obtain local altimeter setting on CTAF; when not received use Chicago Midway Intl altimeter setting and increase all MDAs 60 feet. Visibility reduction by helicopters NA.

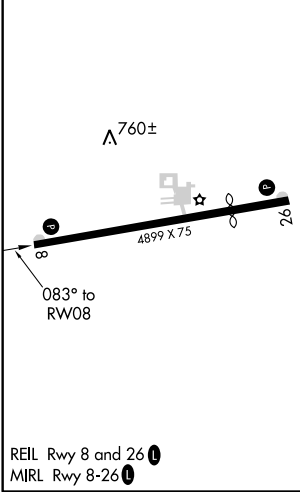
**⚠** NA

MISSED APPROACH: Climbing right turn to 2300 direct FIPEX and hold.

CHICAGO APP CON <b>133.1 285.6</b>	UNICOM <b>123.0 (CTAF) 0</b>
---------------------------------------	---------------------------------



ELEV 634	TDZE 634
----------	----------



REIL Rwy 8 and 26 **0**  
MIRL Rwy 8-26 **0**

5 NM Holding Pattern	VGSIs and descent angles not coincident (VGSi Angle 3.50/TCH 44).		2300	FIPEX
	FIPEX	SOCOS	2300	RWY 08
	6 NM		5 NM	
CATEGORY	A	B	C	D
LNAV MDA	1080-1	446 (500-1)	NA	
CIRCLING	1200-1	566 (600-1)	NA	

Procedure NA for arrivals at BOONE via V422 southeastbound.

EC-2. 01 FEB 2018 to 01 MAR 2018

EC-2. 01 FEB 2018 to 01 MAR 2018