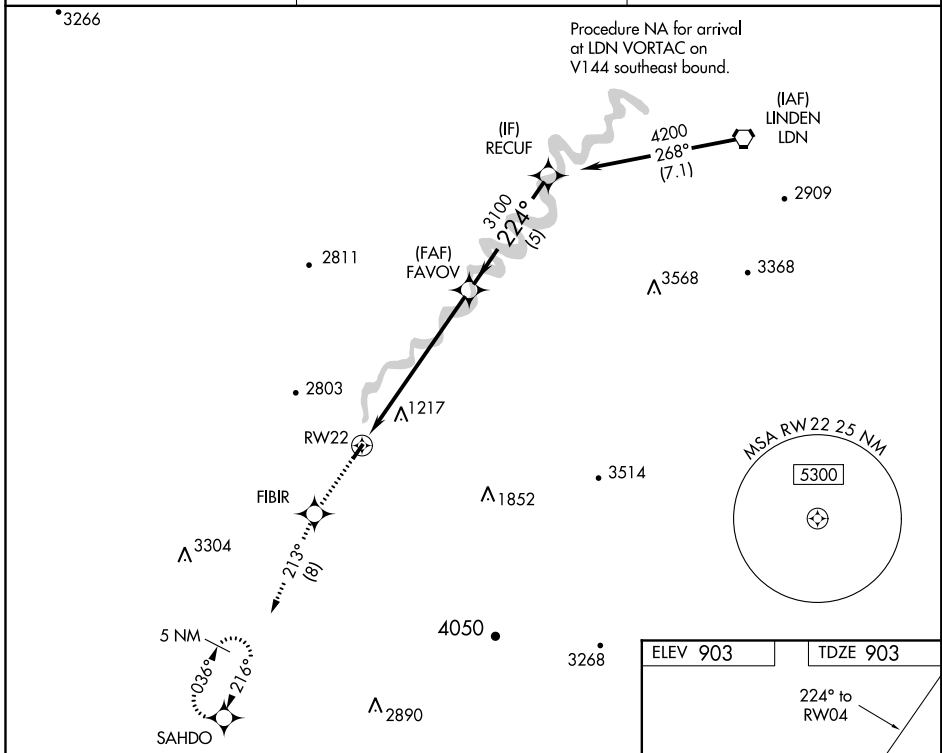


WAAS CH 77627 W22A	APP CRS 224°	Rwy Idg TDZE Apt Elev	3125 903 903
--	------------------------	-----------------------------	---

RNAV (GPS) RWY 22

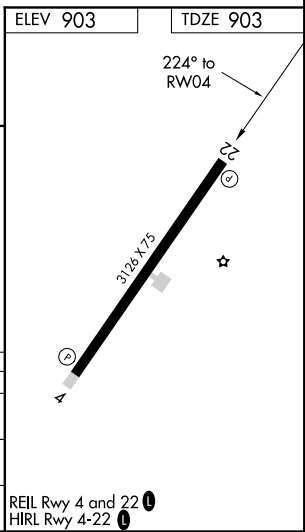
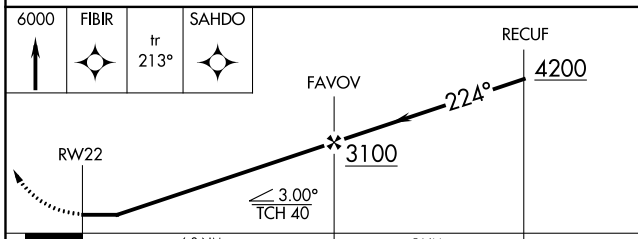
LURAY CAVERNS (LUA)

<p>▽ DME/DME RNP-0.3 NA. Helicopter visibility reduction below 3/4 SM NA. When local altimeter setting not received, use Staunton/Waynesboro/Harrisonburg altimeter setting and increase all MDA 120 feet; increase LNAV Cat B and Circling Cat B visibility 1/4 mile.</p>	<p>MISSED APPROACH: Climb to 6000 direct FIBIR and on track 213° to SAHDO and hold, continue climb-in-hold to 6000.</p>	
<p>AWOS-3 118.275</p>	<p>WASHINGTON CENTER 133.2 282.2</p>	<p>UNICOM 122.8 (CTAF) 0</p>



NE-3: 01 FEB 2018 to 01 MAR 2018

NE-3: 01 FEB 2018 to 01 MAR 2018



CATEGORY	A	B	C	D
LP MDA	1460-1	557 (600-1)	NA	NA
LNAV MDA	1820-1 1/4	917 (1000-1 1/4)	NA	NA
CIRCLING	1820-1 1/4	917 (1000-1 1/4)	NA	NA