

WAAS CH 40301 W35A	APP CRS 348°	Rwy Idg TDZE 21 Apt Elev 24	8002
----------------------------------------	------------------------	-------------------------------------------------	-------------

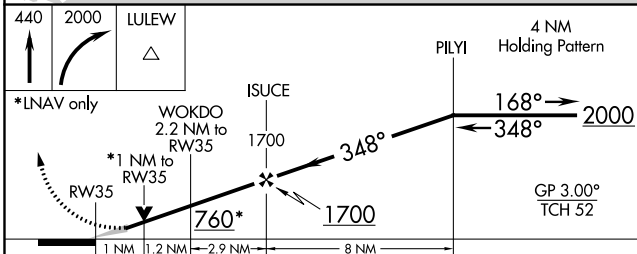
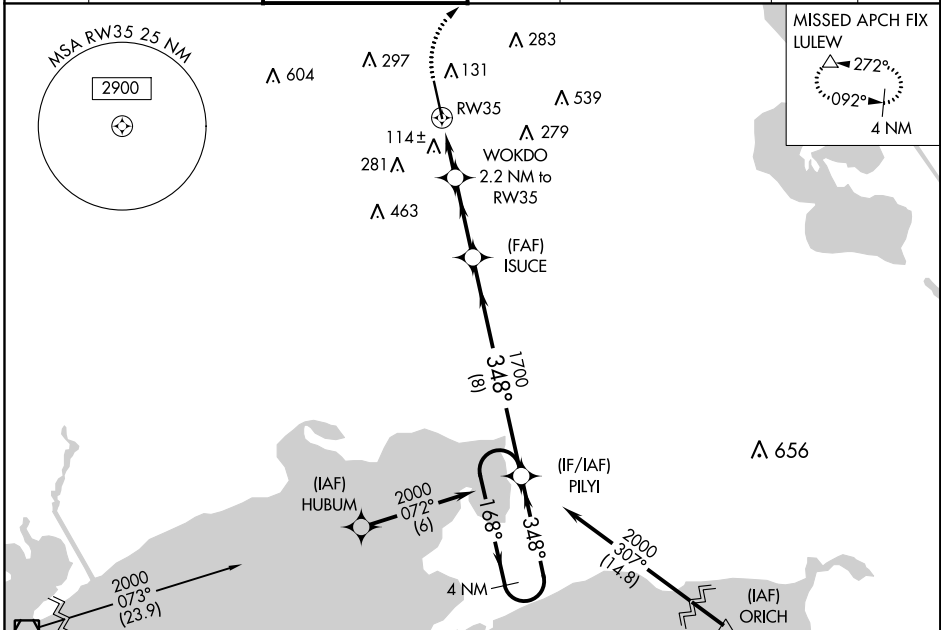
RNAV (GPS) RWY 35

ACADIANA RGNL (A.R.A.)

▽ For uncompensated Baro-VNAV systems, LNAV/VNAV NA below -3°C (27°F) or above 54°C (130°F). DME/DME RNP-0.3 NA.
For inop ALS, increase LNAV/VNAV all Cats visibility to 7/5 SM and LNAV Cats C/D visibility to 1 SM. Circling NA to Rwy's 17W and 35W.

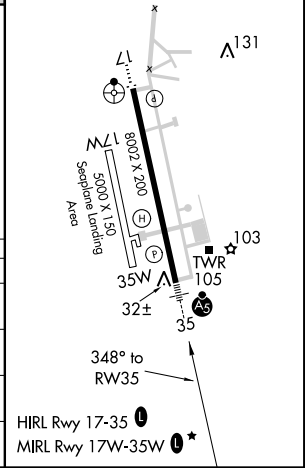
MALS R MISSED APPROACH: Climb to 440 then climbing right turn to 2000 direct LULEW and hold.

ASOS 133.325	LAFAYETTE APP CON * 121.1 268.7	ACADIANA TOWER * 125.0 (CTAF) 0 239.3	GND CON 121.7	CLNC DEL 121.7 118.05 (when twr closed)	UNICOM 122.95	0 * 122.7
------------------------	-------------------------------------------	-------------------------------------------------	-------------------------	-------------------------------------------------------------	-------------------------	----------------------------



CATEGORY	A	B	C	D
LPV DA		221-1/2	200 (200-1/2)	
LNAV/DA		303-1/2	282 (300-1/2)	
LNAV MDA	380-1/2	359 (400-1/2)	380-3/4	359 (400-3/4)
C CIRCLING	440-1 416 (500-1)	480-1 456 (500-1)	600-1 1/2 576 (600-1/2)	680-2 656 (700-2)

ELEV 24	D TDZE 21
----------------	-------------------------



SC-4, 01 MAR 2018 to 29 MAR 2018

SC-4, 01 MAR 2018 to 29 MAR 2018